



PERFORMANCE MEASURES SUMMARY AND PEER COLLEGE COMPARISON

August 3, 2021

PREPARED BY THE OFFICE OF TECHNOLOGY &
INSTITUTIONAL EFFECTIVENESS



Rockingham
COMMUNITY COLLEGE

Table of Contents

Introduction	3
Performance Summary	4
Basic Skills Student Progress	5
RCC – 5-Year	6
Peer Group	7
Student Success Rate in College-Level English Courses	8
RCC – 5-Year	9
Peer Group	10
Student Success Rate in College-Level Math Courses	11
RCC – 5-Year	12
Peer Group	13
First Year Progression	14
RCC – 5-Year	15
Peer Group	16
Curriculum Completion	17
RCC – 5-Year	18
Peer Group	19
Licensure and Certification Passing Rate	20
RCC – 5-Year	22
Peer Group	23
College Transfer Performance	24
RCC – 5-Year	25
Peer Group	26
Appendix: First-Time Fall Cohort Definition	27

Performance Summary

- Met or Exceeded Excellence Level
- Above College Avg, Below Excellence
- Above Baseline Level, Below Average
- Below Baseline Level

	Basic Skills Progress	Credit English Success	Credit Math Success	First Year Progression	Curriculum Completion Rate	Licensure Pass Rate Index	Transfer Performance	Met or Exceeded Excellence Level	Below Excellence Level, Above College Average	Below College Average, Above Baseline Level	Below Baseline Level
System Excellence Level	42.5%	70.4%	54.5%	71.8%	61.3%	1.09	91.1%				
System Baseline	15.7%	47.1%	29.9%	56.8%	43.1%	0.75	79.4%				
Average College Percentage	33.5%	62.6%	46.3%	66.8%	55.3%	0.98	87.2%				
System Totals (All Students)	34.4%	62.0%	45.2%	66.2%	54.1%	1.00	87.8%				
Alamance CC	43.1%	72.1%	52.6%	60.6%	53.3%	1.03	87.5%	2	3	2	0
Asheville-Buncombe TCC	29.1%	55.8%	42.6%	59.4%	47.7%	1.09	83.0%	0	1	6	0
Beaufort County CC	25.5%	57.5%	51.2%	68.3%	63.1%	1.06	86.2%	1	3	3	0
Bladen CC	31.4%	73.2%	58.1%	68.5%	34.8%	0.89	85.7%	2	1	3	1
Blue Ridge CC	40.5%	59.6%	45.3%	60.4%	49.9%	1.03	82.7%	0	2	5	0
Brunswick CC	48.4%	75.4%	61.8%	70.4%	55.4%	1.04	86.9%	3	3	1	0
Caldwell CC & TI	38.1%	59.2%	58.0%	71.9%	49.1%	1.03	86.1%	2	2	3	0
Cape Fear CC	35.8%	63.2%	52.2%	69.2%	53.7%	1.07	89.8%	0	6	1	0
Carteret CC	21.1%	52.7%	33.2%	67.0%	57.7%	1.04	84.2%	0	3	4	0
Catawba Valley CC	37.1%	72.4%	57.7%	68.8%	60.9%	1.08	89.6%	2	5	0	0
Central Carolina CC	37.2%	50.5%	42.6%	64.0%	61.7%	0.92	87.3%	1	2	4	0
Central Piedmont CC	29.9%	66.6%	47.1%	64.8%	49.5%	1.12	91.0%	1	3	3	0
Cleveland CC	42.4%	58.0%	48.2%	68.7%	62.3%	0.96	90.2%	1	4	2	0
Coastal Carolina CC	49.3%	70.4%	50.7%	67.9%	55.9%	1.00	86.1%	2	4	1	0
College of the Albemarle	38.0%	63.9%	45.0%	67.1%	63.6%	1.04	85.7%	1	4	2	0
Craven CC	27.4%	65.8%	40.7%	67.0%	57.3%	0.97	89.1%	0	4	3	0
Davidson-Davie CC	37.8%	62.4%	50.1%	71.3%	64.6%	1.01	87.9%	1	5	1	0
Durham TCC	22.2%	59.0%	42.3%	63.6%	44.5%	1.02	91.4%	1	1	5	0
Edgecombe CC	19.0%	67.6%	40.6%	58.9%	51.3%	0.83	87.4%	0	2	5	0
Fayetteville TCC	37.0%	54.9%	34.8%	56.9%	53.1%	1.00	80.9%	0	2	5	0
Forsyth TCC	28.6%	65.9%	46.4%	64.5%	50.1%	1.03	86.9%	0	3	4	0
Gaston College	29.3%	60.3%	39.9%	69.5%	55.6%	0.99	82.7%	0	3	4	0
Guilford TCC	26.2%	60.0%	36.4%	60.9%	43.3%	0.99	87.7%	0	2	5	0
Halifax CC	19.4%	66.2%	26.3%	63.2%	53.2%	0.87	78.8%	0	1	4	2
Haywood CC	57.7%	66.5%	51.2%	64.9%	61.1%	1.00	80.2%	1	4	2	0
Isothermal CC	29.0%	68.5%	44.4%	68.4%	66.6%	1.04	88.5%	1	4	2	0
James Sprunt CC	16.0%	69.6%	57.0%	74.9%	64.6%	0.86	90.6%	3	2	2	0
Johnston CC	40.7%	57.2%	46.0%	71.1%	61.7%	1.09	90.3%	2	3	2	0
Lenoir CC	35.4%	62.7%	49.3%	66.5%	56.8%	1.01	94.1%	1	5	1	0
Martin CC	28.3%	64.8%	52.8%	78.7%	52.8%	0.86	83.6%	1	2	4	0
Mayland CC	32.4%	50.0%	42.4%	67.1%	48.8%	1.05	88.7%	0	3	4	0
McDowell TCC	33.6%	77.9%	63.7%	63.5%	52.3%	0.90	89.9%	2	2	3	0
Mitchell CC	43.3%	64.5%	46.1%	71.9%	55.7%	1.00	88.3%	2	4	1	0
Montgomery CC	26.2%	67.3%	50.0%	57.7%	58.2%	1.01	83.9%	0	4	3	0
Nash CC	40.1%	51.6%	49.8%	64.2%	47.2%	0.93	83.8%	0	2	5	0
Pamlico CC	39.6%	54.2%	47.5%	61.2%	56.3%	0.32	100.0%	1	3	2	1
Piedmont CC	28.0%	74.1%	35.7%	69.9%	51.8%	1.02	86.2%	1	2	4	0
Pitt CC	45.6%	54.6%	37.0%	64.0%	50.0%	0.98	87.7%	1	2	4	0
Randolph CC	29.6%	65.8%	49.8%	64.7%	50.8%	0.99	84.8%	0	3	4	0
Richmond CC	19.0%	67.2%	64.3%	59.0%	59.7%	1.04	83.3%	1	3	3	0
Roanoke-Chowan CC	26.9%	69.2%	44.2%	74.0%	58.6%	0.91	79.2%	1	2	3	1
Robeson CC	29.6%	52.1%	44.3%	59.1%	47.2%	0.92	81.5%	0	0	7	0
Rockingham CC	34.0%	55.8%	46.2%	61.1%	51.5%	0.93	85.6%	0	1	6	0
Rowan-Cabarrus CC	47.8%	60.2%	36.1%	67.8%	57.6%	0.91	85.6%	1	2	4	0
Sampson CC	35.7%	54.9%	36.9%	73.7%	63.3%	0.84	89.7%	2	2	3	0
Sandhills CC	38.5%	54.6%	41.3%	76.7%	61.2%	0.97	88.5%	1	3	3	0
South Piedmont CC	34.0%	48.2%	32.0%	71.4%	56.3%	0.97	91.7%	1	3	3	0
Southeastern CC	29.4%	66.0%	48.6%	59.3%	55.4%	0.90	87.3%	0	4	3	0
Southwestern CC	27.0%	68.3%	55.1%	66.2%	55.3%	1.03	79.7%	1	3	3	0
Stanly CC	44.8%	58.2%	51.9%	68.9%	51.1%	0.99	89.4%	1	4	2	0
Surry CC	43.8%	58.9%	43.3%	65.2%	58.9%	1.00	93.2%	2	2	3	0
Tri-County CC	28.3%	75.0%	41.1%	73.7%	54.0%	1.03	88.0%	2	2	3	0
Vance-Granville CC	32.1%	63.1%	32.5%	69.8%	54.6%	0.92	91.2%	1	2	4	0
Wake TCC	42.9%	60.5%	44.8%	67.8%	51.8%	1.08	90.3%	1	3	3	0
Wayne CC	31.6%	72.6%	48.3%	68.1%	60.7%	1.04	89.1%	1	5	1	0
Western Piedmont CC	22.4%	77.7%	51.5%	69.3%	63.0%	1.07	87.8%	2	4	1	0
Wilkes CC	41.7%	61.5%	59.0%	69.1%	60.3%	0.92	90.9%	1	4	2	0
Wilson CC	16.8%	44.8%	38.6%	73.6%	58.2%	0.94	90.2%	1	2	3	1

1. Basic Skills Student Progress

Purpose

To ensure individuals with low literacy skills are progressing academically toward credential or employment

Description

Percentage of Periods of Participation (PoP) with at least one Measurable Skill Gain (MSG)

Calculation

Denominator: Number of Periods of Participation (PoP) during the Basic Skills program year (July 1 to June 30).

A PoP begins each time a student enrolls in adult education, accumulates at least 12 contact hours, and then exits the program. Subsequent periods occur when a student re-enters the program after 90 days have lapsed since the person last received services and accumulates 12 or more contact hours. If there is no exit, the PoP continues to the next program year.

Numerator: Based on the denominator, number of periods of participation in which at least one measurable skill gain was achieved. Participants can demonstrate MSG in five ways:

- **Pre and Post testing:** The student scores high enough on an NRS approved posttest to place into a higher educational functioning level than indicated by the student's pretest.
- **Adult High School Credits:** The student enters an Adult High School (AHS) program with less than 75% of the required AHS credits and obtained enough AHS credits to exceed the 75% threshold prior to the end of the program year (June 30)
- **Post-Secondary Enrollment:** The student exits the program and subsequently enrolls in post-secondary education prior to the end of the program year (June 30). Post-secondary enrollment is verified by data matching to the National Student Clearinghouse and the NCCCS Data Warehouse.
- **High School Equivalency Test Graduate:** The student achieves a passing score on State-approved high school equivalency tests (GED, HiSet, or TASC) prior to the end of the program year (June 30). Credit is given based on matching student records to a passers database populated by the test vendors. Matching occurs based on an exact match of first name, last name and date of birth and/or the HSEID.
- **Adult High School Graduate:** The student completes the requirements of the Adult High School program and is issued an adult high school diploma prior to the end of the program year (June 30).

Data Sources

LEIS annual data file

Curriculum Registration, Progress, Financial Aid Report (CRPFAR) data file

Continuing Education data file

Additional Details

Baseline and excellence levels were calculated based on one year of institutional outcomes (2017-18 program year).

Excellence level: 42.5% (28 more Measurable Skill Gains)

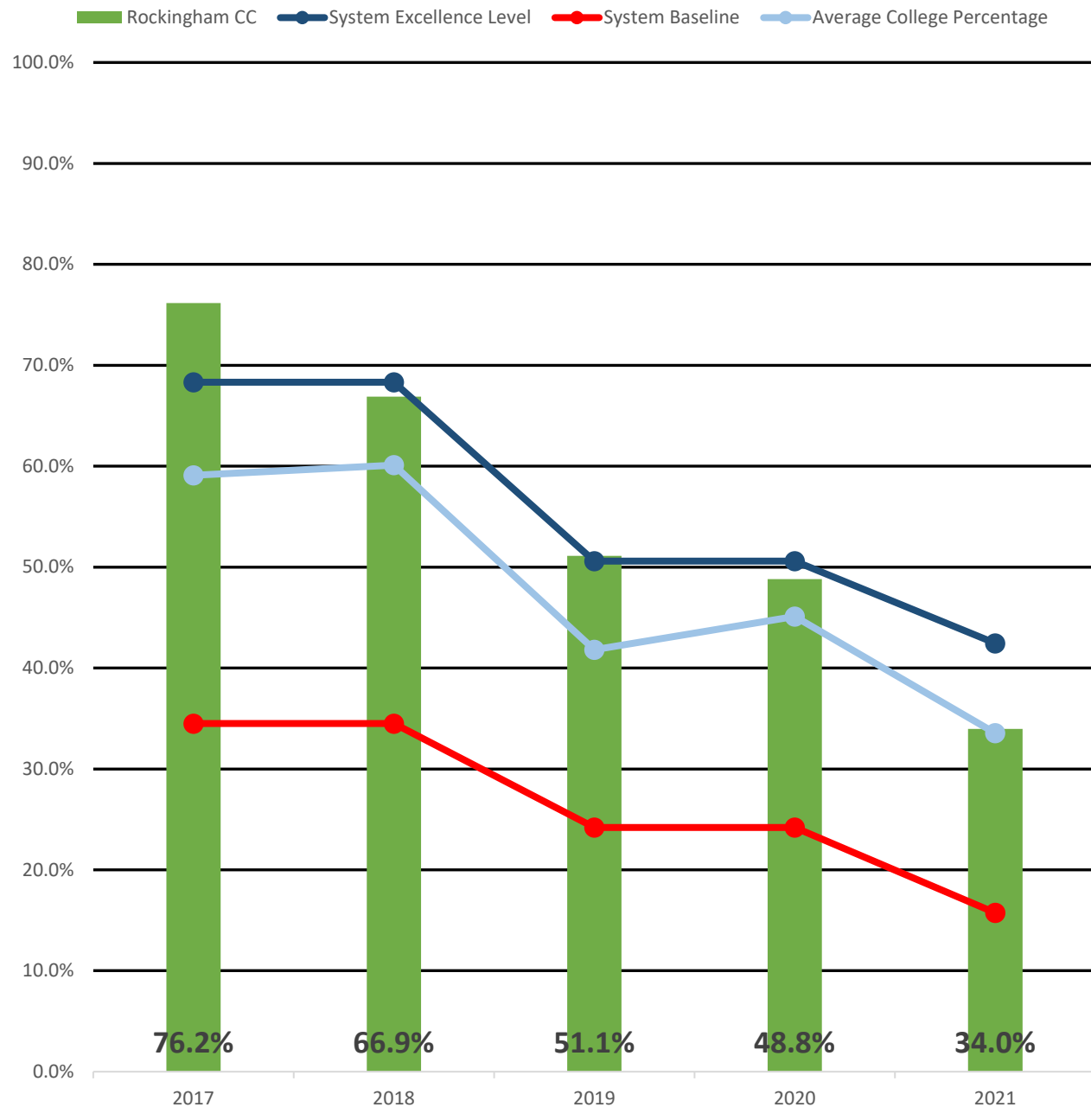
Baseline level: 15.7%

RCC: 34.0%

Average College Percentage: 33.5%

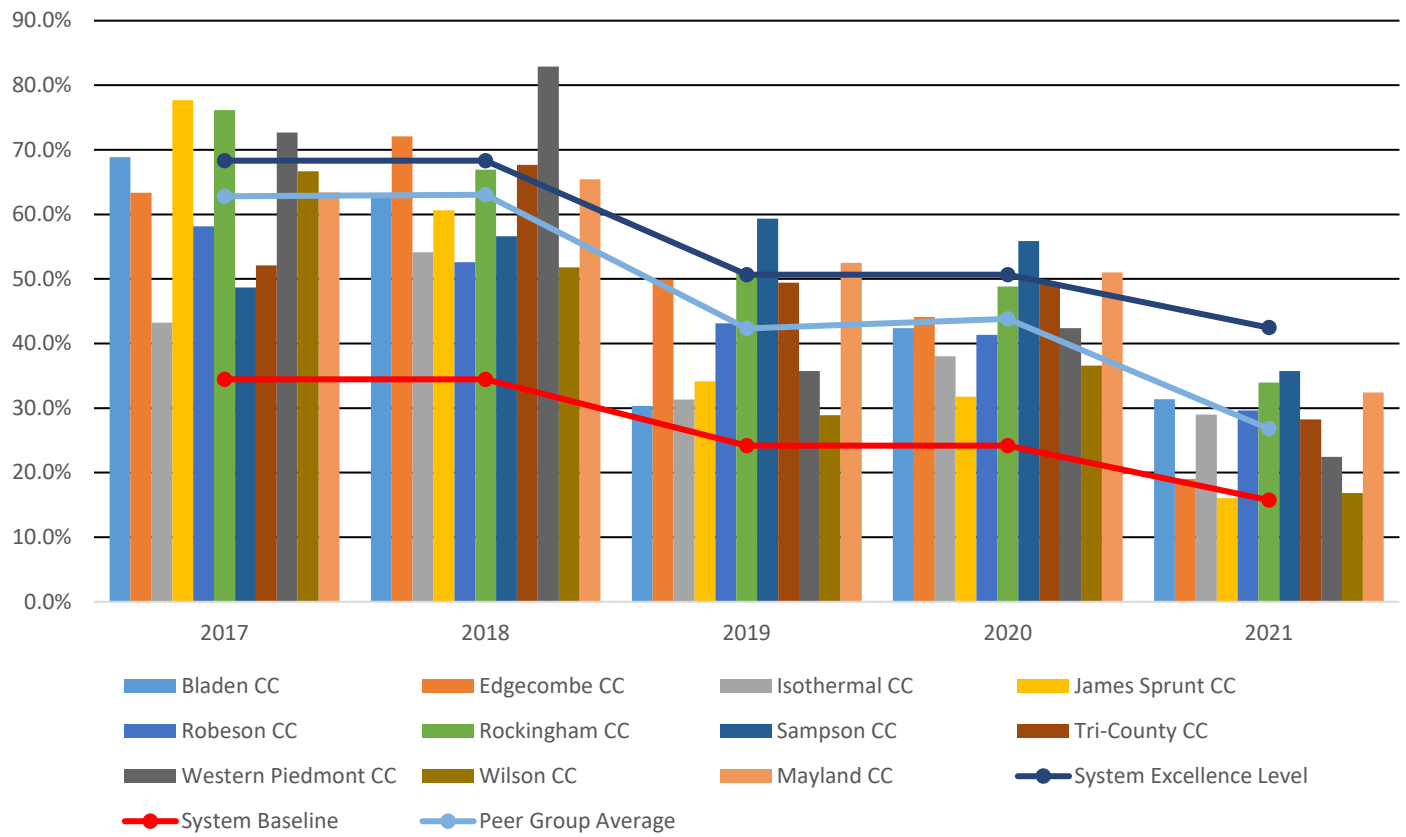
Peer Group Average: 26.8%

Basic Skills Progress - RCC Performance Measures 2017-2021



Basic Skills Progress					
	2017	2018	2019	2020	2021
Rockingham CC	76.2%	66.9%	51.1%	48.8%	34.0%
System Excellence Level	68.3%	68.3%	50.6%	50.6%	42.5%
System Baseline	34.5%	34.5%	24.2%	24.2%	15.7%
Average College Percentage	59.1%	60.1%	41.8%	45.1%	33.5%

Basic Skills Progress (Peer Group) Performance Measures 2017-2021



Basic Skills Progress (Peer Group)					
	2017	2018	2019	2020	2021
System Excellence Level	68.3%	68.3%	50.6%	50.6%	42.5%
System Baseline	34.5%	34.5%	24.2%	24.2%	15.7%
Peer Group Average	62.8%	63.0%	42.3%	43.8%	26.8%
Bladen CC	68.9%	62.7%	30.3%	42.4%	31.4%
Edgecombe CC	63.4%	72.1%	49.9%	44.1%	19.0%
Isothermal CC	43.2%	54.1%	31.3%	38.0%	29.0%
James Sprunt CC	77.7%	60.6%	34.1%	31.8%	16.0%
Mayland CC	63.4%	65.4%	52.5%	51.0%	32.4%
Robeson CC	58.2%	52.6%	43.1%	41.3%	29.6%
Rockingham CC	76.2%	66.9%	51.1%	48.8%	34.0%
Sampson CC	48.7%	56.6%	59.3%	55.9%	35.7%
Tri-County CC	52.1%	67.7%	49.4%	49.5%	28.3%
Western Piedmont CC	72.7%	82.9%	35.7%	42.4%	22.4%
Wilson CC	66.7%	51.8%	28.9%	36.6%	16.8%

2. Student Success Rate in College-Level English Courses

Purpose

To ensure students are successfully completing a credit-bearing English course within their first three academic years

Description

Percentage of first-time associate degree seeking and transfer pathway students passing a credit-bearing English course with a "C" or better within three years of their first fall term of enrollment

Calculation

Denominator: First-time fall associate degree and transfer pathway students (i.e., students with a curriculum code that begins with an A or P) during their first fall.

Numerator: Of those in the denominator, the number earning a standard letter grade of A, B, C, or P in at least one credit-bearing (course number ≥ 100) English course within three years (by the end of the third summer term).

Note: See appendix for new first-time fall cohort definition

Data Sources

Curriculum Registration, Progress, Financial Aid Report (CRPFAR) data file
National Student Clearinghouse

Additional Details

Students were followed for 10 consecutive terms (including the summer terms and the preceding summer, if applicable).

Baseline and excellence levels were calculated based on three years of institutional outcomes (2013, 2014, and 2015 cohorts).

Excellence level: 70.4% (67 more successful completers)

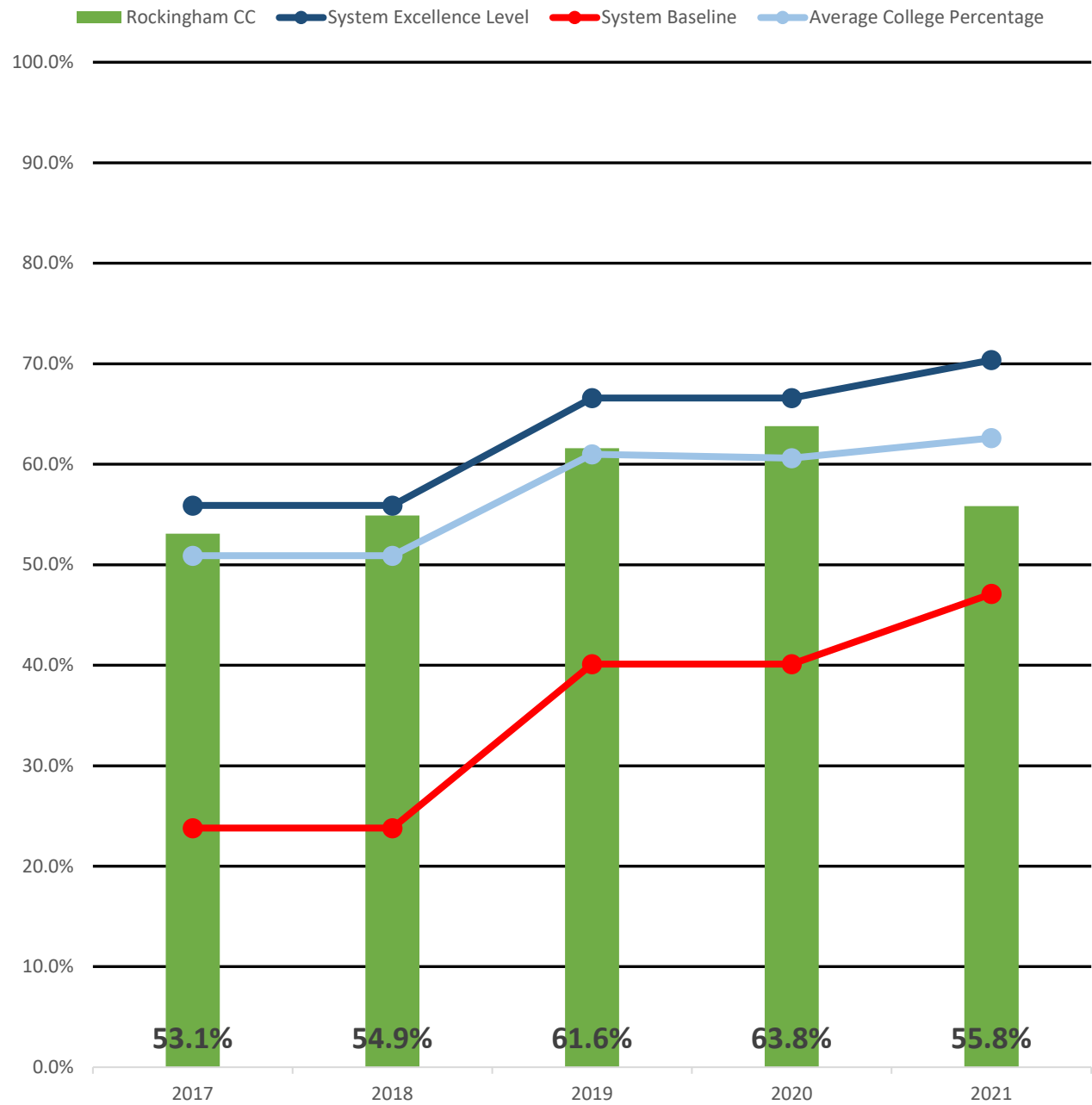
Baseline level: 47.1%

RCC: 55.8%

Average College Percentage: 62.6% (31 more successful completers)

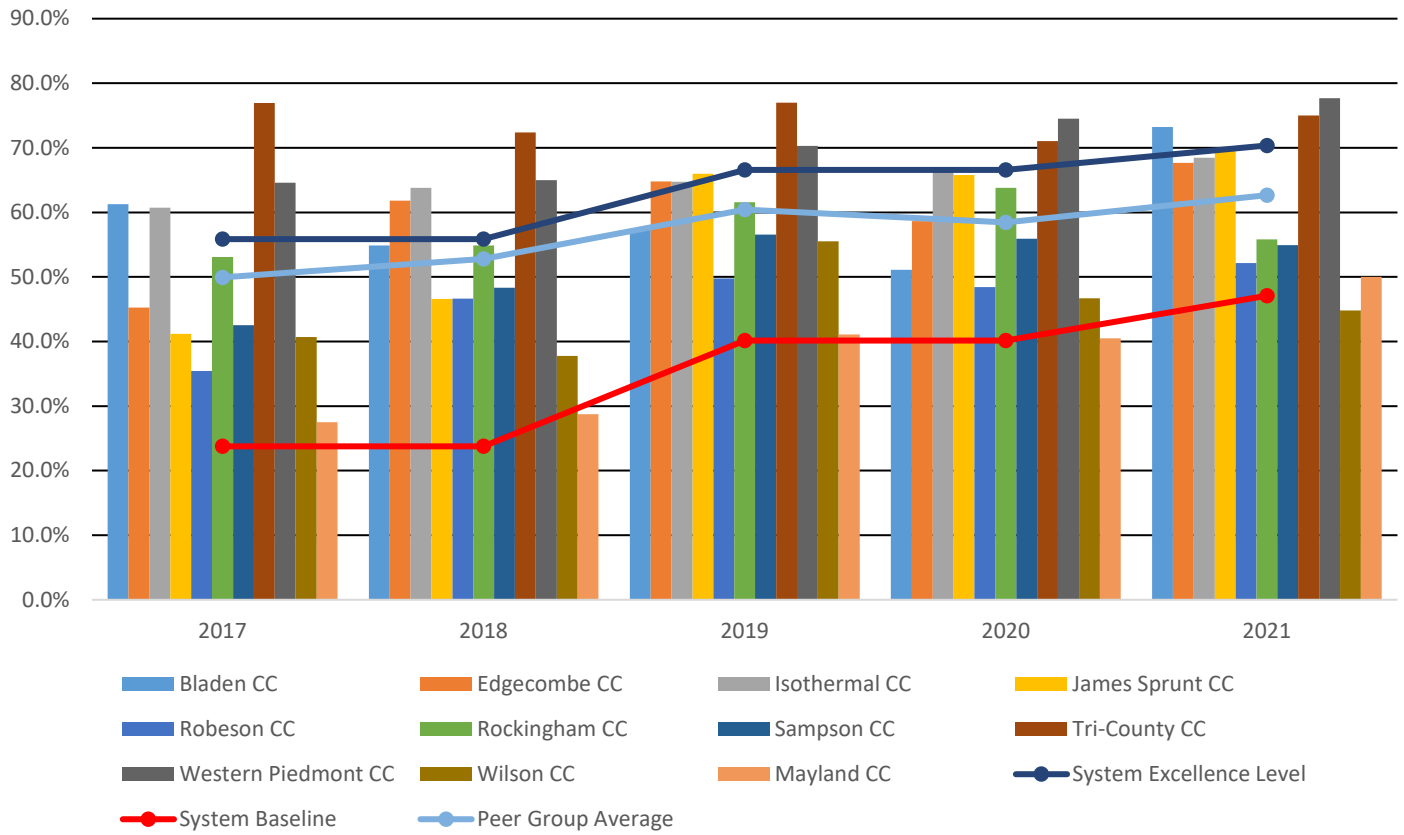
Peer Group Average: 62.7%

Credit English Success - RCC Performance Measures 2017-2021



Credit English Success					
	2017	2018	2019	2020	2021
Rockingham CC	53.1%	54.9%	61.6%	63.8%	55.8%
System Excellence Level	55.9%	55.9%	66.6%	66.6%	70.4%
System Baseline	23.8%	23.8%	40.1%	40.1%	47.1%
Average College Percentage	50.9%	50.9%	61.0%	60.6%	62.6%

Credit English Success (Peer Group) Performance Measures 2017-2021



Credit English Success (Peer Group)					
	2017	2018	2019	2020	2021
System Excellence Level	55.9%	55.9%	66.6%	66.6%	70.4%
System Baseline	23.8%	23.8%	40.1%	40.1%	47.1%
Peer Group Average	49.9%	52.8%	60.4%	58.5%	62.7%
Bladen CC	61.3%	54.9%	57.4%	51.1%	73.2%
Edgecombe CC	45.3%	61.8%	64.8%	58.6%	67.6%
Isothermal CC	60.7%	63.8%	64.7%	66.8%	68.5%
James Sprunt CC	41.2%	46.6%	66.0%	65.8%	69.6%
Mayland CC	27.5%	28.8%	41.1%	40.5%	50.0%
Robeson CC	35.4%	46.6%	49.8%	48.4%	52.1%
Rockingham CC	53.1%	54.9%	61.6%	63.8%	55.8%
Sampson CC	42.5%	48.3%	56.6%	55.9%	54.9%
Tri-County CC	77.0%	72.4%	77.0%	71.0%	75.0%
Western Piedmont CC	64.6%	65.0%	70.3%	74.5%	77.7%
Wilson CC	40.7%	37.8%	55.5%	46.7%	44.8%

3. Student Success Rate in College-Level Math Courses

Purpose

To ensure students are successfully completing credit-bearing Math courses within their first three academic years

Description

Percentage of first-time fall associate degree seeking and transfer pathway students passing a credit-bearing Math course with a "C" or better within three years of their first term of enrollment

Calculation

Denominator: First-time fall associate degree and transfer pathway students (i.e., students with a curriculum code that begins with an A or P) during their first fall.

Numerator: Of those in the denominator, the number earning a standard letter grade of A, B, C, or P in at least one credit-bearing (course number ≥ 100) Math course within three years (by the end of the third summer term).

Note: See appendix for new first-time fall cohort definition

Data Sources

Curriculum Registration, Progress, Financial Aid Report (CRPFAR) data file
National Student Clearinghouse

Additional Details

Students were followed for 10 consecutive terms (including the summer terms and the preceding summer, if applicable).

Baseline and excellence levels were calculated based on three years of institutional outcomes (2013, 2014, and 2015 cohorts).

Excellence level: 54.5% (38 more successful completers)

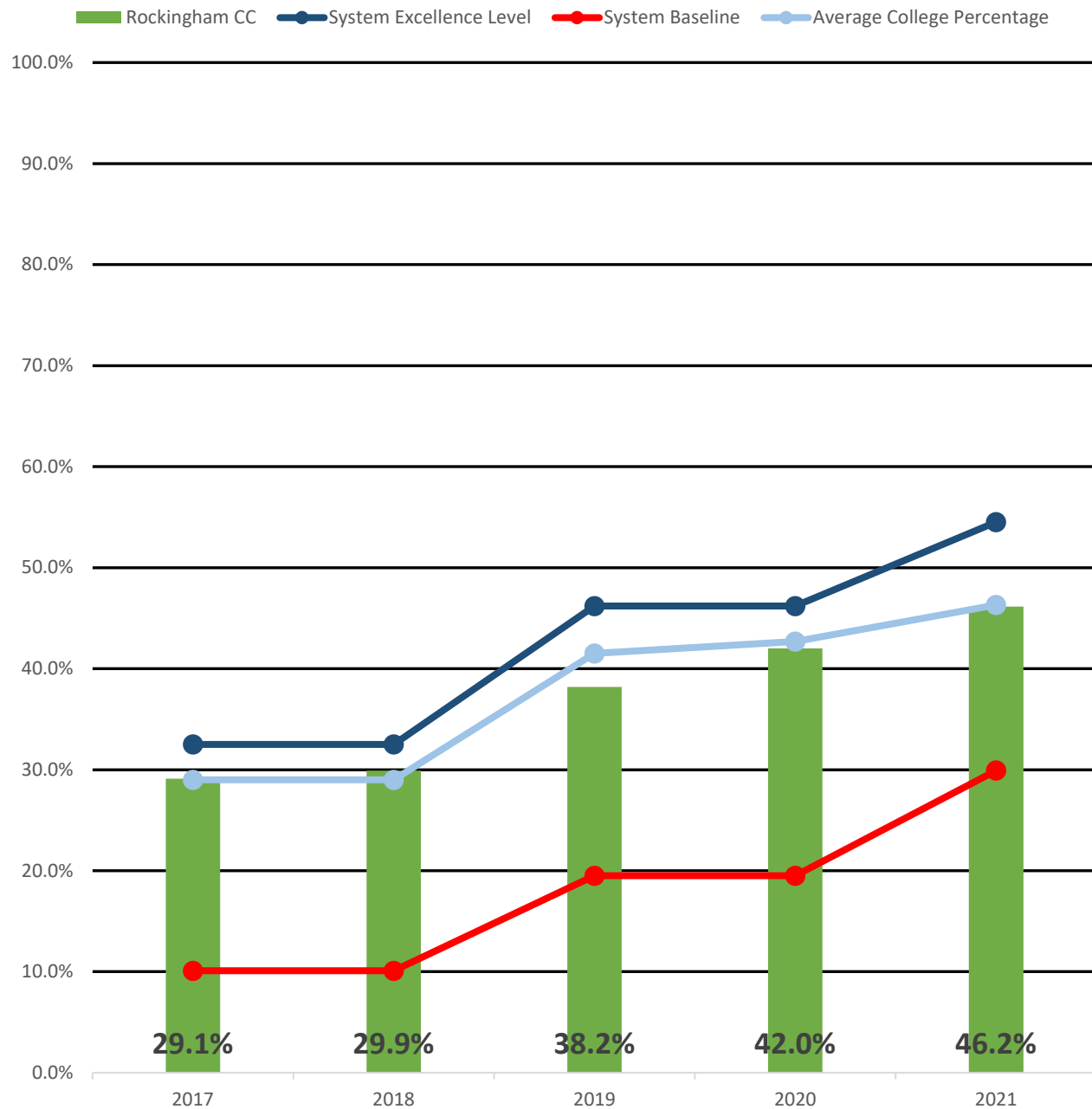
Baseline level: 29.9%

RCC: 46.2%

Average College Percentage: 46.3% (1 more successful completer)

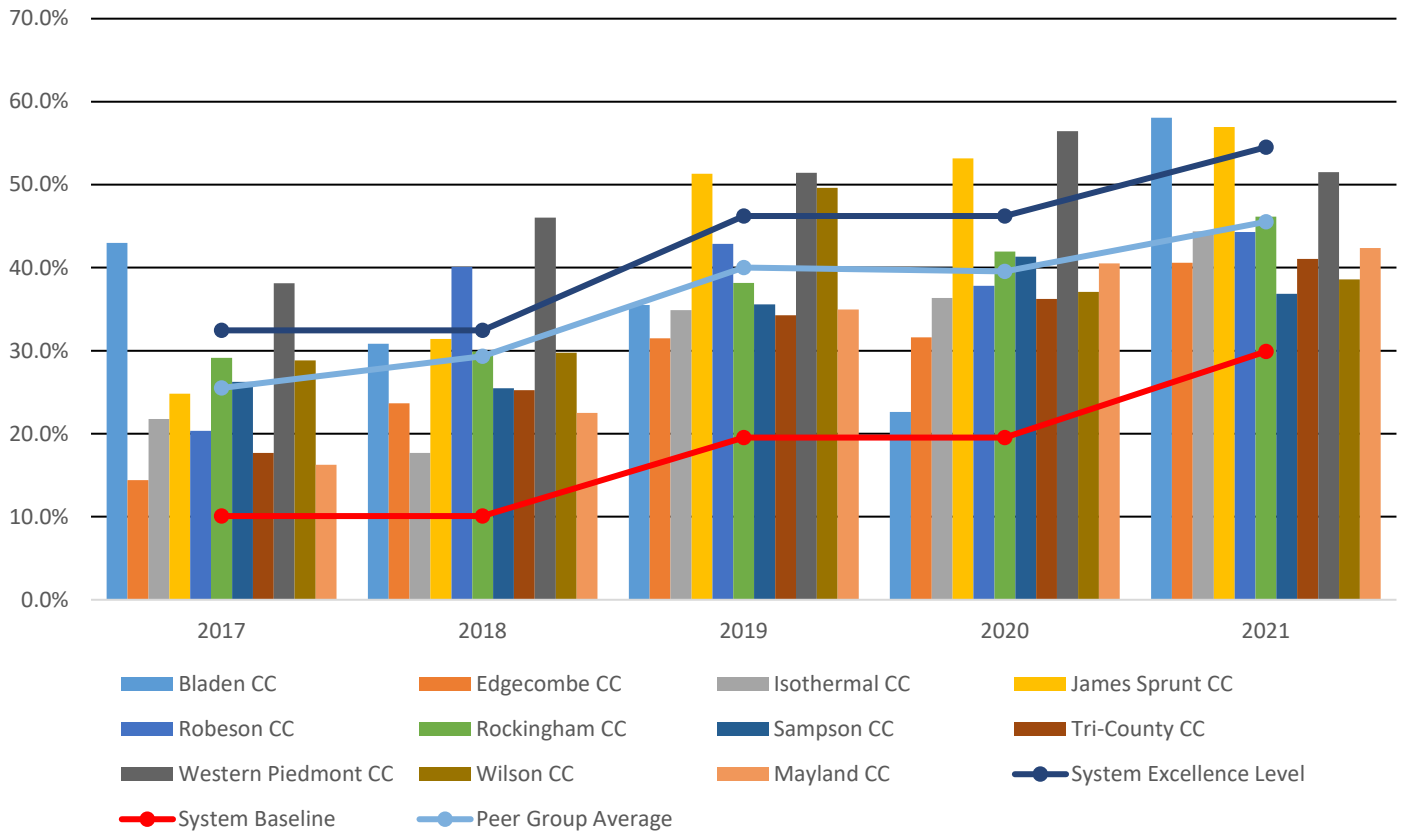
Peer Group Average: 45.5%

Credit Math Success - RCC Performance Measures 2017-2021



Credit Math Success					
	2017	2018	2019	2020	2021
Rockingham CC	29.1%	29.9%	38.2%	42.0%	46.2%
System Excellence Level	32.5%	32.5%	46.2%	46.2%	54.5%
System Baseline	10.1%	10.1%	19.5%	19.5%	29.9%
Average College Percentage	29.0%	29.0%	41.5%	42.7%	46.3%

Credit Math Success (Peer Group) Performance Measures 2017-2021



Credit Math Success (Peer Group)					
	2017	2018	2019	2020	2021
System Excellence Level	32.5%	32.5%	46.2%	46.2%	54.5%
System Baseline	10.1%	10.1%	19.5%	19.5%	29.9%
Peer Group Average	25.5%	29.3%	40.0%	39.6%	45.5%
Bladen CC	43.0%	30.9%	35.5%	22.6%	58.1%
Edgemcombe CC	14.4%	23.7%	31.5%	31.6%	40.6%
Isothermal CC	21.8%	17.7%	34.9%	36.4%	44.4%
James Sprunt CC	24.8%	31.4%	51.3%	53.2%	57.0%
Mayland CC	16.3%	22.5%	35.0%	40.5%	42.4%
Robeson CC	20.4%	40.1%	42.9%	37.8%	44.3%
Rockingham CC	29.1%	29.9%	38.2%	42.0%	46.2%
Sampson CC	26.2%	25.5%	35.6%	41.3%	36.9%
Tri-County CC	17.7%	25.2%	34.3%	36.2%	41.1%
Western Piedmont CC	38.1%	46.0%	51.4%	56.4%	51.5%
Wilson CC	28.9%	29.8%	49.6%	37.1%	38.6%

4. First Year Progression

Purpose

To ensure first-year students are making progress toward credential completion

Description

Percentage of first-time fall credential-seeking students who graduate prior to or enroll in postsecondary education during the subsequent fall term

Calculation

Denominator: First-time fall credential-seeking curriculum students.

Numerator: Of those in the denominator, the number who graduate with a postsecondary credential prior to the subsequent fall term or return to post-secondary education during the subsequent fall term.

Note: See appendix for new first-time fall cohort definition

Data Sources

Curriculum Registration, Progress, Financial Aid Report (CRPFAR) data file

Graduation Extract data file

National Student Clearinghouse

Additional Details

Students were followed for 4 consecutive terms (including the summer term and the preceding summer, if applicable).

Baseline and excellence levels were calculated based on three years of institutional outcomes (2015, 2016, and 2017 cohorts).

Excellence level: 71.8% (77 more graduates or students retained)

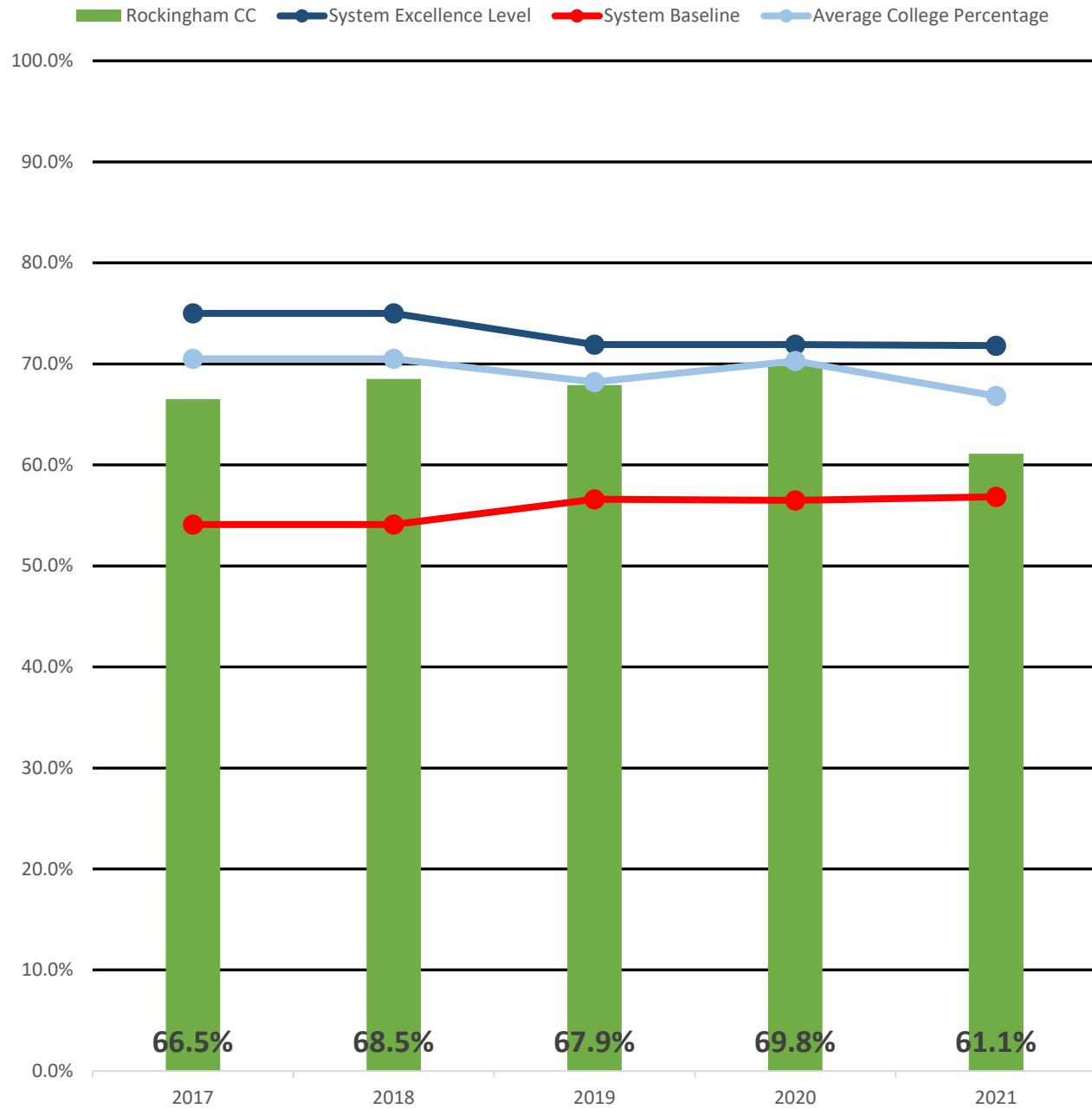
Baseline level: 56.8%

RCC: 61.1%

Average College Percentage: 66.8% (41 more graduates or students retained)

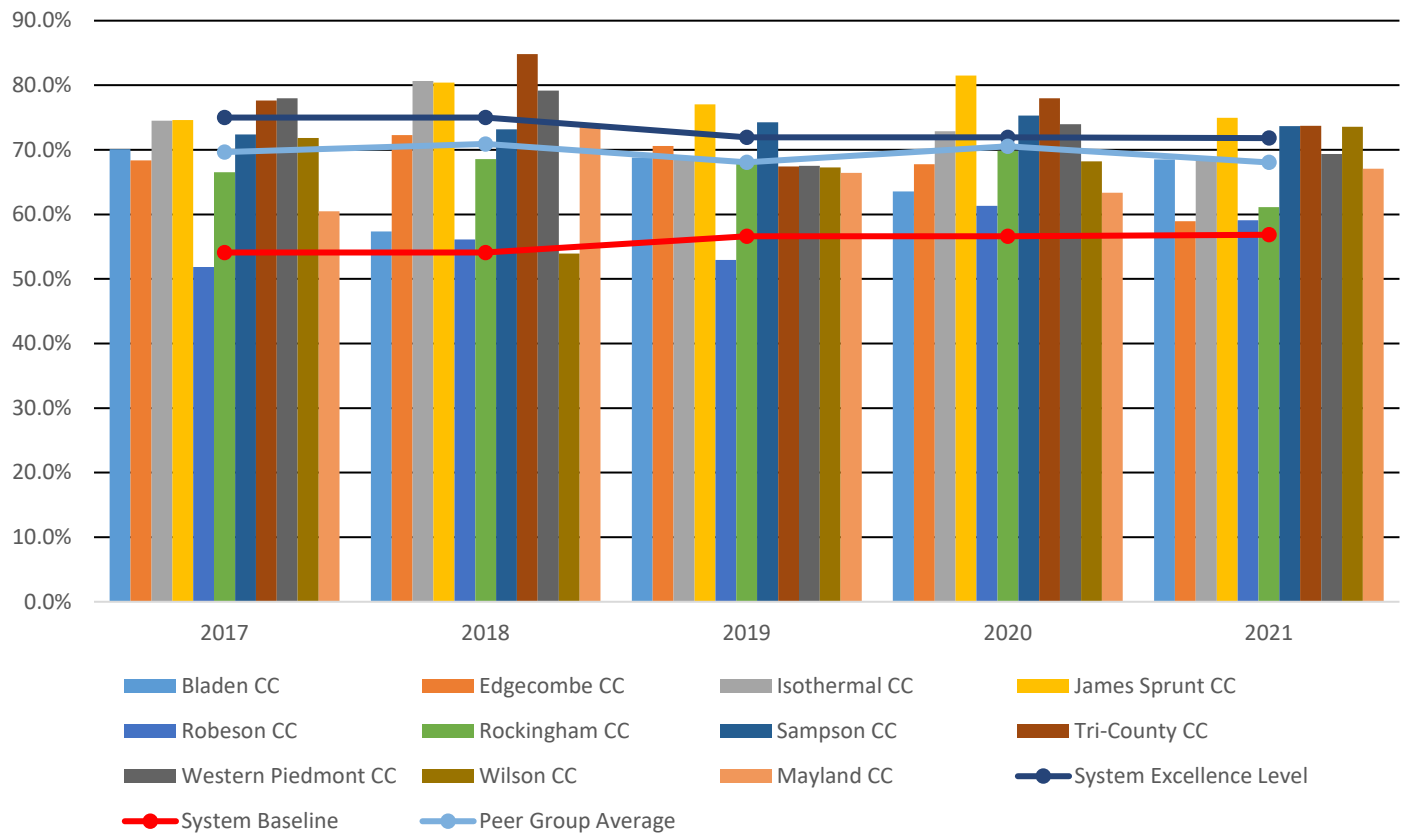
Peer Group Average: 68.0%

First Year Progression - RCC Performance Measures 2017-2021



First Year Progression					
	2017	2018	2019	2020	2021
Rockingham CC	66.5%	68.5%	67.9%	69.8%	61.1%
System Excellence Level	75.0%	75.0%	71.9%	71.9%	71.8%
System Baseline	54.1%	54.1%	56.6%	56.5%	56.8%
Average College Percentage	70.5%	70.5%	68.2%	70.3%	66.8%

First Year Progression (Peer Group) Performance Measures 2017-2021



First Year Progression (Peer Group)					
	2017	2018	2019	2020	2021
System Excellence Level	75.0%	75.0%	71.9%	71.9%	71.8%
System Baseline	54.1%	54.1%	56.6%	56.6%	56.8%
Peer Group Average	69.7%	70.9%	68.1%	70.5%	68.0%
Bladen CC	70.1%	57.4%	68.8%	63.5%	68.5%
Edgecombe CC	68.3%	72.3%	70.6%	67.7%	58.9%
Isothermal CC	74.5%	80.6%	68.9%	72.9%	68.4%
James Sprunt CC	74.6%	80.4%	77.0%	81.5%	74.9%
Mayland CC	60.5%	73.6%	66.4%	63.4%	67.1%
Robeson CC	51.9%	56.1%	52.9%	61.3%	59.1%
Rockingham CC	66.5%	68.5%	67.9%	69.8%	61.1%
Sampson CC	72.4%	73.2%	74.3%	75.3%	73.7%
Tri-County CC	77.6%	84.8%	67.4%	78.0%	73.7%
Western Piedmont CC	78.0%	79.2%	67.5%	74.0%	69.3%
Wilson CC	71.9%	53.9%	67.3%	68.2%	73.6%

5. Curriculum Completion

Purpose

To ensure student completion and/or persistence toward a post-secondary credential in a timely manner.

Description

Percentage of first-time fall credential-seeking curriculum students who have graduated, transferred, or are still enrolled during the fourth academic year with 42 successfully completed non-developmental hours.

Calculation

Denominator: First-time fall curriculum students

Numerator: Of those in the denominator, the number of students who have graduated, transferred, or are still enrolled during the fourth academic year (fall, spring, or summer) with at least 42 successfully completed non-developmental hours.

To be successful, students must complete one or more of the following:

- **Graduation:** Graduated from a North Carolina Community College credential program (A, D, or C) before the end of the 4th summer term following the first fall semester.
- **Transfer:** Transferred to a 4-year college as indicated in the National Student Clearinghouse database at any point through the end of the 4th summer term following the first fall semester.
- **Persistence:** Student is enrolled in an NCCCS college during the 4th academic year (fall, spring or summer) and has successfully completed at least 42 non-developmental credit hours by the end of the summer term. Successful completion is defined as achieving a course standard letter grade of A, B, C, or P.

Note: See appendix for new first-time fall cohort definition

Data Sources

Curriculum Registration, Progress, Financial Aid Report (CRPFAR) data file
Graduation Extract data file
National Student Clearinghouse

Additional Details

Students were followed for 13 consecutive terms (including the summer terms and the preceding summer, if applicable).

Baseline and excellence levels were calculated based on three years of institutional outcomes (2012, 2013, and 2014 cohorts).

Excellence level: 61.3% (44 graduates, transfers, or students retained)

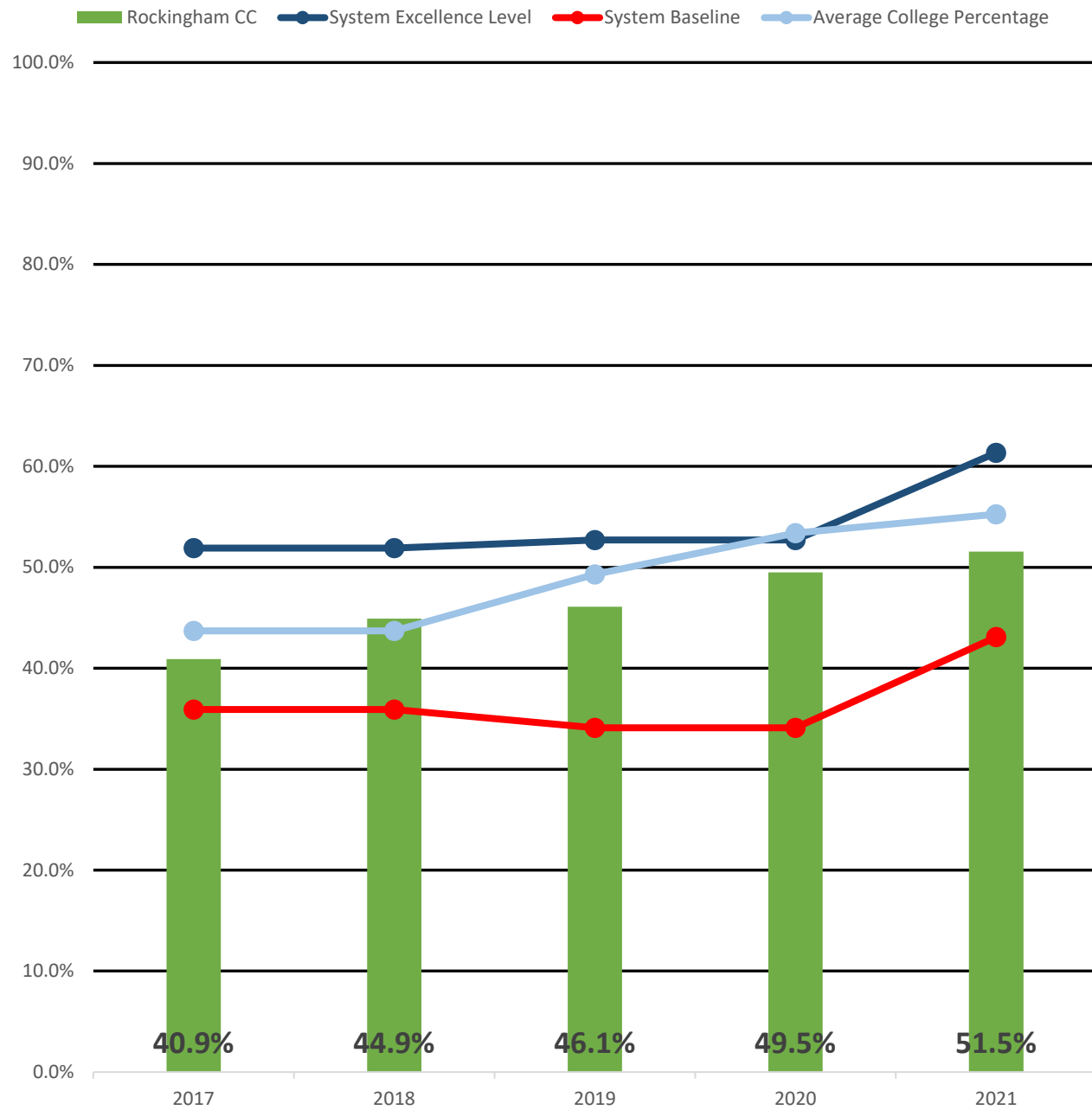
Baseline level: 43.1%

RCC: 51.5%

Average College Percentage: 55.3% (17 graduates, transfers, or students retained)

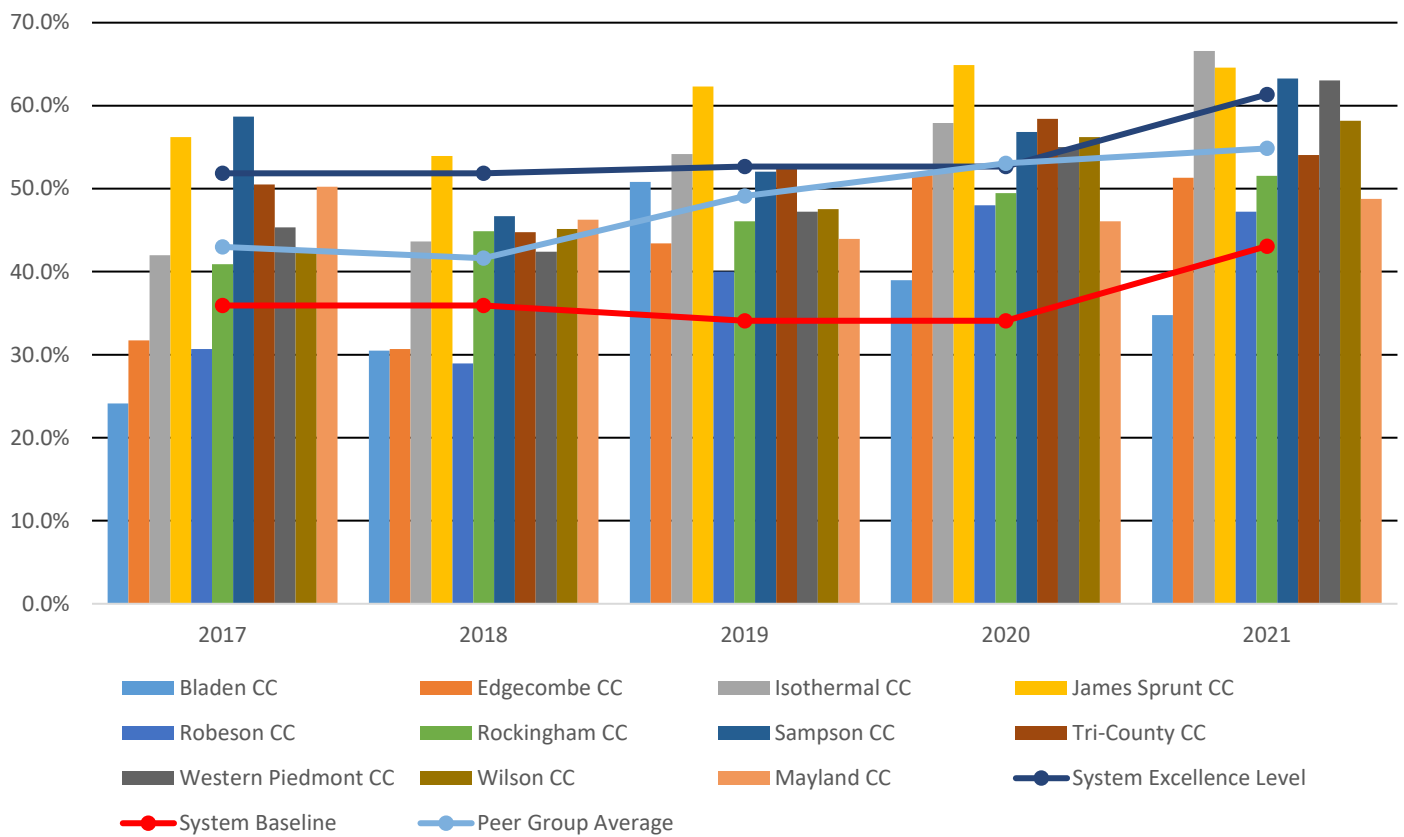
Peer Group Average: 54.8%

Curriculum Completion Rate - RCC Performance Measures 2017-2021



Curriculum Completion Rate					
	2017	2018	2019	2020	2021
Rockingham CC	40.9%	44.9%	46.1%	49.5%	51.5%
System Excellence Level	51.9%	51.9%	52.7%	52.7%	61.3%
System Baseline	35.9%	35.9%	34.1%	34.1%	43.1%
Average College Percentage	43.7%	43.7%	49.3%	53.4%	55.3%

Curriculum Completion Rate (Peer Group) Performance Measures 2017-2021



Curriculum Completion Rate (Peer Group)					
	2017	2018	2019	2020	2021
System Excellence Level	51.9%	51.9%	52.7%	52.7%	61.3%
System Baseline	35.9%	35.9%	34.1%	34.1%	43.1%
Peer Group Average	43.0%	41.6%	49.1%	53.0%	54.8%
Bladen CC	24.1%	30.5%	50.8%	39.0%	34.8%
Edgecombe CC	31.7%	30.7%	43.4%	51.6%	51.3%
Isothermal CC	42.0%	43.7%	54.2%	57.9%	66.6%
James Sprunt CC	56.2%	53.9%	62.3%	64.9%	64.6%
Mayland CC	50.2%	46.3%	43.9%	46.1%	48.8%
Robeson CC	30.7%	28.9%	40.0%	48.0%	47.2%
Rockingham CC	40.9%	44.9%	46.1%	49.5%	51.5%
Sampson CC	58.7%	46.7%	52.1%	56.8%	63.3%
Tri-County CC	50.5%	44.7%	52.7%	58.4%	54.0%
Western Piedmont CC	45.3%	42.4%	47.2%	55.0%	63.0%
Wilson CC	42.6%	45.1%	47.6%	56.2%	58.2%

6. Licensure and Certification Passing Rate

Purpose

To ensure programmatic coursework prepares students to competently practice in their chosen profession.

Description

Weighted index score of first-time test-taker results on licensure and certification exams. Exams included in this measure are state mandated exams which candidates must pass before becoming active practitioners. Weights are based on the tier associated with the related instructional program.

Calculation

License Index Score (LIS): First time pass rate on an exam divided by the statewide first-time pass rate on same exam

License Weighted Denominator (LWD): Number of first-time test-takers for an exam multiplied by the exam tier weight (Tier 1A = 1.30, Tier 1B = 1.15, Tier 2/3 = 1.00)

Total Weighted Denominator (TWD): Sum of License Weighted Denominators across all exams (LWD₁+LWD₂+LWD₃+...)

Total Weighted Numerator (TWN): Sum of the product of each License Index Score and their License Weighted Denominator [(LIS₁ × LWD₁) + (LIS₂ × LWD₂) + (LIS₃ × LWD₃) + ...]

Total Weighted Index Score: Total Weighted Numerator (TWN) divided by Total Weighted Denominator (TWD)

Data Sources

<u>Tier 1A</u>	<u>Tier 1B</u>	<u>Tier2</u>	<u>Tier2</u>	<u>Tier 3</u>
Council of Interstate Testing <i>Dental Hygiene</i>	Federation of State Massage Therapy Boards <i>Massage & Body Work</i> <i>Therapist</i>	NC Department of Justice, Criminal Justice Standards Division <i>Basic Law Enforcement</i> <i>Training</i>	NC Department of Health and Human Services <i>Nurse Aide I</i>	NC Department of Insurance, Office of State Fire Marshall - Code Officials Qualification Board <i>Building Inspector</i> <i>Electrical Inspector</i> <i>Fire Inspector</i> <i>Mechanical Inspector</i> <i>Plumbing Inspector</i>
NC Board of Occupational Therapy <i>Occupational Therapist Assistant</i>	NC Veterinary Medical Board <i>Veterinary Medicine</i> <i>Technology</i>	NC Department of Justice, Sheriff's Training & Standards Division <i>Detention Officer</i>	NC Board of Barber Examiners <i>Barber</i>	
NC Board of Nursing <i>Practical Nursing</i> <i>Registered Nursing</i>		NC Office of Emergency Medical Services <i>AEMT</i> <i>EMR</i> <i>EMT</i> <i>EMT-P</i>	DL Roope Administrations Inc. <i>Apprentice</i> <i>Cosmetology</i> <i>Esthetician</i> <i>Manicurist</i>	
NC Board of Physical Therapy Examiners <i>Physical Therapist Assistant</i>			NC Real Estate Commission <i>Provisional Real Estate</i> <i>Broker</i>	
American Registry of Radiologic Technologists <i>Radiography</i>				

6. Licensure and Certification Passing Rate (continued)

Additional Details

The number of first-time test-takers and the number passing were provided to the System Office by agencies issuing the license or certification. Depending on the exam, data may be provided on a fiscal or calendar year. Exams are listed above *in italics*. Selection of exams based on:

- Requirement to pass in order to practice in NC
- Strong association with an occupation (not part of a job)
- At least 50 test-takers statewide in 2017-18
- At least 5 colleges with test-takers in 2017-18

Baseline and excellence levels were calculated based on one year of institutional outcomes (2017-18).

Excellence level: 1.09

Baseline level: 0.75

RCC: 0.93

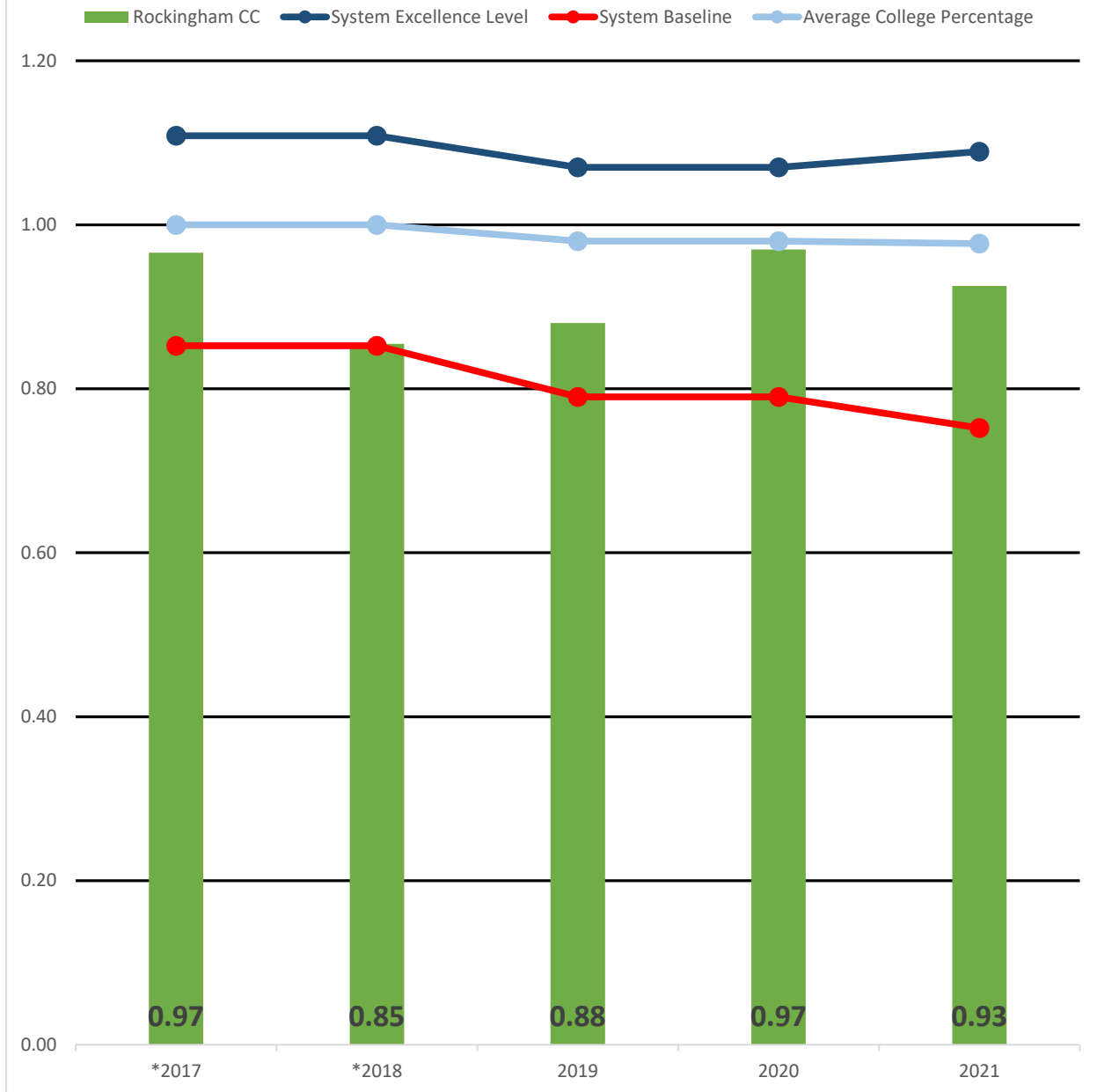
Average College Percentage: 0.98

Peer Group Average: 0.95

Pass-rate percentages

Program	Pass Rate	Average College Pass Rate	Pass Rate for Excellence
Practical Nursing	68%	91%	100%
Registered Nursing	88%	91%	100%
Nurse Aide	76%	77%	83%
BLET	73%	85%	100%
EMT-Basic	78%	81%	88%
Paramedic	100%	91%	100%
Cosmetology	67%	80%	100%

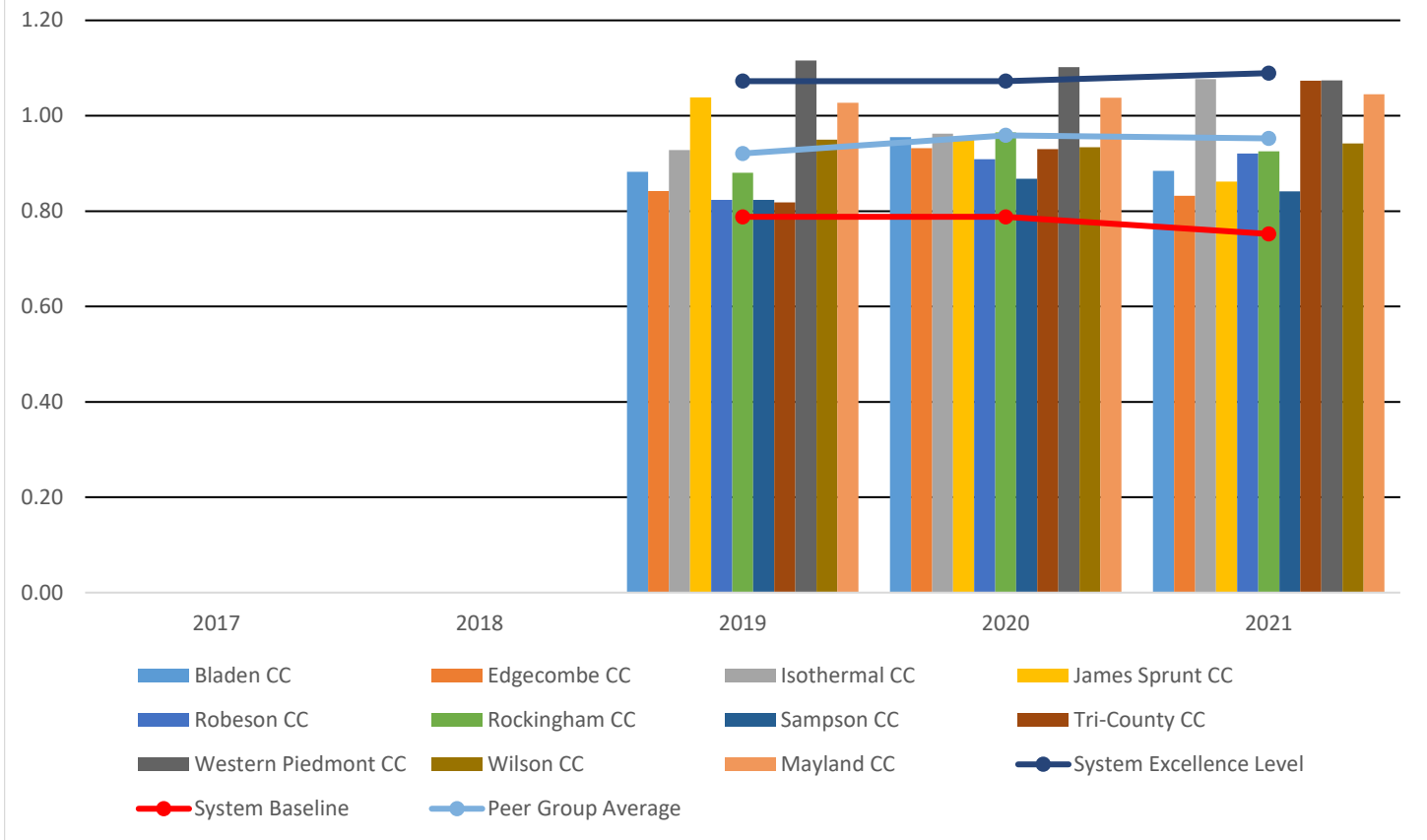
Licensure Passing Rate - RCC Performance Measures 2017-2021



Licensure Passing Rate					
	*2017	*2018	2019	2020	2021
Rockingham CC	0.97	0.85	0.88	0.97	0.93
System Excellence Level	1.11	1.11	1.07	1.07	1.09
System Baseline	0.85	0.85	0.79	0.79	0.75
Average College Percentage	1.00	1.00	0.98	0.98	0.98

*The numbers before 2019 are a calculation done by Technology and Institutional Effectiveness for the sake of continuity. They were not previously reported this way.

Licensure Passing Rate (Peer Group) Performance Measures 2017-2021



Licensure Passing Rate (Peer Group)					
	2017	2018	2019	2020	2021
System Excellence Level			1.07	1.07	1.09
System Baseline			0.79	0.79	0.75
Peer Group Average			0.92	0.96	0.95
Bladen CC			0.88	0.96	0.88
Edgecombe CC			0.84	0.93	0.83
Isothermal CC			0.93	0.96	1.08
James Sprunt CC			1.04	0.95	0.86
Mayland CC			1.03	1.04	1.04
Robeson CC			0.82	0.91	0.92
Rockingham CC			0.88	0.97	0.93
Sampson CC			0.82	0.87	0.84
Tri-County CC			0.82	0.93	1.07
Western Piedmont CC			1.12	1.10	1.07
Wilson CC			0.95	0.93	0.94

7. College Transfer Performance

Purpose

To ensure the academic success of community college students at a four-year university or college.

Description

Among community college Associate Degree completers and those who have completed 30 or more articulated transfer credits who subsequently transfer to a four-year university or college during the fall semester, the percentage who graduate prior to or remain enrolled at any four-year college or university the subsequent fall semester.

Calculation

Denominator: Students who earned an Associate Degree during the fall, spring, and/or summer of the academic year and/or accumulated least 30 articulated transfer credits in the NCCCS prior to the end of the summer term of the cohort year, who enrolled the subsequent fall in any 4-year college or university that participates in the National Student Clearinghouse Student Tracker program.

Numerator: Of those in the denominator, the number who graduate with a bachelor's degree or higher prior to the next subsequent fall semester or remained enrolled in any 4-year college or university during the subsequent fall semester.

Data Sources

Curriculum Registration, Progress, Financial Aid Report (CRPFAR) data file
Graduation Extract data file
National Student Clearinghouse

Additional Details

Students were followed for 7 consecutive terms (three terms in the NCCCS system (fall, spring, and summer), fall enrollment in a 4 year and degree progress in fall, spring, and summer of that year, and fall enrollment in the subsequent year).

Baseline and excellence levels were calculated based on three years of institutional outcomes (2014-15, 2015-16, and 2016-17 transfers).

Excellence level: 91.1% (7 more students graduating or being retained at the 4-year college they transfer to)

Baseline level: 79.4%

RCC: 85.6%

Average College Percentage: 87.2% (2 more students graduating or being retained at the 4-year college they transfer to)

Peer Group Average: 87.9%

College Transfer Performance - RCC Performance Measures 2017-2021



College Transfer Performance					
	2017	2018	2019	2020	2021
Rockingham CC	85.4%	86.2%	87.9%	85.4%	85.6%
System Excellence Level	87.6%	87.6%	89.4%	89.4%	91.1%
System Baseline	65.1%	65.1%	74.4%	74.4%	79.4%
Average College Percentage	82.5%	82.5%	85.2%	85.4%	87.2%

College Transfer Performance (Peer Group) Performance Measures 2017-2021



College Transfer Performance (Peer Group)					
	2017	2018	2019	2020	2021
System Excellence Level	87.6%	87.6%	89.4%	89.4%	91.1%
System Baseline	65.1%	65.1%	74.4%	74.4%	79.4%
Peer Group Average	82.0%	85.1%	82.5%	82.8%	87.6%
Bladen CC	71.1%	83.6%	88.3%	87.4%	85.7%
Edgewcombe CC	87.1%	79.5%	84.4%	83.3%	87.4%
Isothermal CC	88.9%	90.0%	78.1%	79.9%	88.5%
James Sprunt CC	76.4%	88.4%	76.3%	75.7%	90.6%
Mayland CC	93.2%	70.6%	80.8%	78.0%	88.7%
Robeson CC	71.6%	86.6%	81.8%	75.5%	81.5%
Rockingham CC	85.4%	86.2%	87.9%	85.4%	85.6%
Sampson CC	83.8%	87.9%	85.2%	87.4%	89.7%
Tri-County CC	88.2%	93.0%	79.1%	85.8%	88.0%
Western Piedmont CC	80.9%	84.1%	85.4%	86.9%	87.8%
Wilson CC	75.3%	85.9%	80.2%	85.3%	90.2%

Appendix: First-Time Fall Cohort Definition

The first-time fall cohort includes fall credential seeking and dual enrollment (Career and College Promise) students enrolled in curriculum courses at a college for the first-time in the fall or preceding summer.

Fall first-time students are identified as follows:

The student has a primary CURRICULUM CODE that begins with an A, C, D, or P during their first fall term. Students with curriculum codes that begin with T (Basic Skills Plus (T90950), Special Credit (T90990), and NC Rural Innovative Schools (T90900)) are excluded. The first alphabetical curriculum is chosen for students with multiple curriculums.

The student is enrolled in at least one curriculum course during their first fall term excluding courses where the COLLEGE LETTER GRADE equals AU, CE, NA, or NS and/or the STANDARD LETTER GRADE equals AU or CE.

The fall semester, or preceding summer, is the student's first curriculum enrollment term in any post-secondary institution. First curriculum enrollment term is determined as follows:

All enrolled students who meet the course enrollment and curriculum requirements stated above are sent to the National Student Clearinghouse for a Prior Attendance (PA) search for enrollment and graduation records (excluding DEGREE TITLES equal to HIGH SCHOOL DIPLOMA, ADULT HIGH SCHOOL DIPLOMA, GED, and GED CERTIFICATE) prior to August 15th of the fall term. These records are evaluated for enrollment prior to and during the preceding summer. Students with no enrollment or graduation record prior to the fall semester and those who only have an enrollment record in the preceding summer are flagged as potential first-time students.

All potential first-time students are then matched to the NCCCS Data Warehouse to search for course enrollment prior to the fall term in one or more courses where the College Letter Grade does not equal AU, CE, NA, or NS and the Standard Letter Grade does not equal AU and CE. Students with no course enrollment prior to the fall semester and those who enrolled for the first time during the preceding summer are included in the fall cohort. NCCCS Data Warehouse matching is based on an exact match to the STUDENTID and/or an exact match to a standardized and concatenated variable comprised of the LAST NAME, FIRST NAME, MIDDLE INITIAL, and DATE OF BIRTH submitted via the CRPFA during the fall term.

The following measures are impacted based on the First-Time Fall Cohort:

- Student Success Rate in College-Level English Courses
- Student Success Rate in College-Level Math Courses
- First Year Progression
- Curriculum Completion

Data Sources

Curriculum Registration, Progress, Financial Aid Report (CRPFAR) data file
National Student Clearinghouse