



PERFORMANCE MEASURES SUMMARY AND PEER COLLEGE COMPARISON

September 17, 2019

PREPARED BY THE OFFICE OF TECHNOLOGY &
INSTITUTIONAL EFFECTIVENESS



Rockingham
COMMUNITY COLLEGE

Performance Summary

- Met or Exceeded Excellence Level
- Above College Avg, Below Excellence
- Above Baseline Level, Below Average
- Below Baseline Level

| | Basic Skills Progress | Credit English Success | Credit Math Success | First Year Progression | Curriculum Completion Rate | Licensure Pass Rate Index | Transfer Performance | | | | |
|-------------------------------------|---|---|---|---|---|--|---|----------------------------------|---|---|----------------------|
| System Excellence Level | 50.6% | 66.6% | 46.2% | 71.9% | 52.7% | 1.07 | 89.4% | Met or Exceeded Excellence Level | Below Excellence Level, Above College Average | Below College Average, Above Baseline Level | Below Baseline Level |
| System Baseline | 24.2% | 40.1% | 19.5% | 56.6% | 34.1% | 0.79 | 74.4% | | | | |
| Average College Percentage | 41.8% | 61.0% | 41.5% | 68.2% | 49.3% | 0.98 | 85.2% | | | | |
| System Totals (All Students) | 39.9% | 61.7% | 41.5% | 67.2% | 47.6% | 1.00 | 85.9% | | | | |
| Alamance CC | ● 40.5% | ● 67.3% | ● 46.6% | ● 59.4% | ● 41.6% | ● 0.98 | ● 83.9% | 2 | 1 | 4 | 0 |
| Asheville-Buncombe TCC | ● 36.1% | ● 52.9% | ● 39.8% | ● 54.6% | ● 46.8% | ● 1.01 | ● 86.0% | 0 | 2 | 4 | 1 |
| Beaufort County CC | ● 39.2% | ● 57.0% | ● 50.2% | ● 70.9% | ● 48.6% | ● 0.93 | ● 86.1% | 1 | 2 | 4 | 0 |
| Bladen CC | ● 30.3% | ● 57.4% | ● 35.5% | ● 68.8% | ● 50.8% | ● 0.88 | ● 88.3% | 0 | 3 | 4 | 0 |
| Blue Ridge CC | ● 40.3% | ● 54.1% | ● 33.3% | ● 61.6% | ● 47.2% | ● 0.97 | ● 90.8% | 1 | 0 | 6 | 0 |
| Brunswick CC | ● 47.3% | ● 73.1% | ● 58.8% | ● 77.4% | ● 52.8% | ● 0.94 | ● 91.3% | 5 | 1 | 1 | 0 |
| Caldwell CC & TI | ● 35.0% | ● 56.2% | ● 47.4% | ● 65.3% | ● 49.5% | ● 1.03 | ● 83.8% | 1 | 2 | 4 | 0 |
| Cape Fear CC | ● 40.0% | ● 66.6% | ● 47.3% | ● 69.1% | ● 47.8% | ● 1.13 | ● 84.9% | 2 | 2 | 3 | 0 |
| Carteret CC | ● 36.2% | ● 61.3% | ● 39.9% | ● 70.5% | ● 50.8% | ● 1.06 | ● 80.6% | 0 | 4 | 3 | 0 |
| Catawba Valley CC | ● 45.6% | ● 70.4% | ● 47.2% | ● 70.4% | ● 53.3% | ● 1.06 | ● 84.3% | 3 | 3 | 1 | 0 |
| Central Carolina CC | ● 45.3% | ● 48.9% | ● 43.6% | ● 67.7% | ● 54.3% | ● 1.00 | ● 86.0% | 1 | 4 | 2 | 0 |
| Central Piedmont CC | ● 33.8% | ● 68.9% | ● 46.7% | ● 65.0% | ● 44.8% | ● 1.09 | ● 86.6% | 3 | 1 | 3 | 0 |
| Cleveland CC | ● 57.0% | ● 51.2% | ● 45.5% | ● 65.9% | ● 52.5% | ● 1.00 | ● 85.1% | 1 | 3 | 3 | 0 |
| Coastal Carolina CC | ● 47.9% | ● 72.7% | ● 43.6% | ● 64.4% | ● 49.7% | ● 1.13 | ● 84.3% | 2 | 3 | 2 | 0 |
| College of the Albemarle | ● 31.2% | ● 59.6% | ● 37.3% | ● 70.4% | ● 53.3% | ● 1.01 | ● 90.4% | 2 | 2 | 3 | 0 |
| Craven CC | ● 43.4% | ● 69.1% | ● 40.5% | ● 66.6% | ● 48.0% | ● 0.89 | ● 85.9% | 1 | 2 | 4 | 0 |
| Davidson County CC | ● 58.8% | ● 67.2% | ● 53.1% | ● 71.1% | ● 49.8% | ● 1.08 | ● 85.8% | 4 | 3 | 0 | 0 |
| Durham TCC | ● 35.6% | ● 59.0% | ● 40.2% | ● 64.6% | ● 45.9% | ● 1.03 | ● 88.5% | 0 | 2 | 5 | 0 |
| Edgecombe CC | ● 49.9% | ● 64.8% | ● 31.5% | ● 70.6% | ● 43.4% | ● 0.84 | ● 84.4% | 0 | 3 | 4 | 0 |
| Fayetteville TCC | ● 37.6% | ● 47.4% | ● 26.3% | ● 63.5% | ● 39.4% | ● 0.92 | ● 81.9% | 0 | 0 | 7 | 0 |
| Forsyth TCC | ● 28.9% | ● 67.9% | ● 40.0% | ● 67.3% | ● 43.4% | ● 1.10 | ● 84.3% | 2 | 0 | 5 | 0 |
| Gaston College | ● 38.3% | ● 58.8% | ● 35.0% | ● 67.3% | ● 44.8% | ● 1.03 | ● 82.0% | 0 | 1 | 6 | 0 |
| Guilford TCC | ● 24.7% | ● 54.9% | ● 31.6% | ● 63.2% | ● 41.5% | ● 0.95 | ● 82.5% | 0 | 0 | 7 | 0 |
| Halifax CC | ● 42.3% | ● 67.0% | ● 28.6% | ● 64.7% | ● 51.1% | ● 0.95 | ● 84.5% | 1 | 2 | 4 | 0 |
| Haywood CC | ● 49.8% | ● 58.1% | ● 33.6% | ● 70.3% | ● 53.2% | ● 0.96 | ● 84.2% | 1 | 2 | 4 | 0 |
| Isothermal CC | ● 31.3% | ● 64.7% | ● 34.9% | ● 68.9% | ● 54.2% | ● 0.93 | ● 78.1% | 1 | 2 | 4 | 0 |
| James Sprunt CC | ● 34.1% | ● 66.0% | ● 51.3% | ● 77.0% | ● 62.3% | ● 1.04 | ● 76.3% | 3 | 2 | 2 | 0 |
| Johnston CC | ● 52.7% | ● 64.1% | ● 51.8% | ● 70.1% | ● 55.1% | ● 1.09 | ● 91.0% | 5 | 2 | 0 | 0 |
| Lenoir CC | ● 48.6% | ● 67.9% | ● 40.9% | ● 67.7% | ● 48.7% | ● 0.94 | ● 84.8% | 1 | 1 | 5 | 0 |
| Martin CC | ● 51.3% | ● 50.8% | ● 41.7% | ● 76.4% | ● 57.6% | ● 0.98 | ● 90.9% | 4 | 2 | 1 | 0 |
| Mayland CC | ● 52.5% | ● 41.1% | ● 35.0% | ● 66.4% | ● 43.9% | ● 1.03 | ● 80.8% | 1 | 1 | 5 | 0 |
| McDowell TCC | ● 44.1% | ● 69.9% | ● 55.1% | ● 70.9% | ● 52.4% | ● 1.02 | ● 86.8% | 2 | 5 | 0 | 0 |
| Mitchell CC | ● 38.1% | ● 60.8% | ● 35.3% | ● 69.8% | ● 55.8% | ● 1.04 | ● 86.0% | 1 | 3 | 3 | 0 |
| Montgomery CC | ● 40.5% | ● 62.0% | ● 29.1% | ● 78.2% | ● 54.2% | ● 0.97 | ● 90.0% | 3 | 1 | 3 | 0 |
| Nash CC | ● 47.1% | ● 47.1% | ● 47.9% | ● 64.5% | ● 37.7% | ● 0.98 | ● 82.6% | 1 | 2 | 4 | 0 |
| Pamlico CC | ● 58.7% | ● 48.1% | ● 51.9% | ● 75.4% | ● 58.2% | ● 0.58 | ● 68.8% | 4 | 0 | 1 | 2 |
| Piedmont CC | ● 43.0% | ● 66.0% | ● 44.2% | ● 67.7% | ● 50.5% | ● 1.05 | ● 87.9% | 0 | 6 | 1 | 0 |
| Pitt CC | ● 39.0% | ● 57.2% | ● 32.1% | ● 65.2% | ● 46.2% | ● 0.98 | ● 88.1% | 0 | 1 | 6 | 0 |
| Randolph CC | ● 42.3% | ● 66.4% | ● 43.5% | ● 65.4% | ● 50.3% | ● 0.98 | ● 85.4% | 0 | 5 | 2 | 0 |
| Richmond CC | ● 35.7% | ● 65.1% | ● 58.3% | ● 72.6% | ● 49.7% | ● 1.01 | ● 79.5% | 2 | 3 | 2 | 0 |
| Roanoke-Chowan CC | ● 13.4% | ● 53.8% | ● 27.4% | ● 78.7% | ● 47.5% | ● 0.93 | ● 85.1% | 1 | 0 | 5 | 1 |
| Robeson CC | ● 43.1% | ● 49.8% | ● 42.9% | ● 52.9% | ● 40.0% | ● 0.82 | ● 81.8% | 0 | 2 | 4 | 1 |
| Rockingham CC | ● 51.1% | ● 61.6% | ● 38.2% | ● 67.9% | ● 46.1% | ● 0.88 | ● 87.9% | 1 | 2 | 4 | 0 |
| Rowan-Cabarrus CC | ● 46.9% | ● 63.7% | ● 34.0% | ● 69.0% | ● 43.6% | ● 0.93 | ● 83.5% | 0 | 3 | 4 | 0 |
| Sampson CC | ● 59.3% | ● 56.6% | ● 35.6% | ● 74.3% | ● 52.1% | ● 0.82 | ● 85.2% | 2 | 2 | 3 | 0 |
| Sandhills CC | ● 38.3% | ● 64.6% | ● 37.5% | ● 72.2% | ● 50.1% | ● 0.99 | ● 88.8% | 1 | 4 | 2 | 0 |
| South Piedmont CC | ● 45.1% | ● 55.2% | ● 39.4% | ● 69.8% | ● 48.5% | ● 0.94 | ● 88.0% | 0 | 3 | 4 | 0 |
| Southeastern CC | ● 45.0% | ● 57.3% | ● 34.0% | ● 67.8% | ● 44.0% | ● 0.89 | ● 86.0% | 0 | 2 | 5 | 0 |
| Southwestern CC | ● 38.5% | ● 70.6% | ● 49.0% | ● 63.6% | ● 51.5% | ● 0.98 | ● 87.4% | 2 | 3 | 2 | 0 |
| Stanly CC | ● 31.2% | ● 56.8% | ● 47.7% | ● 71.5% | ● 56.8% | ● 0.97 | ● 84.2% | 2 | 1 | 4 | 0 |
| Surry CC | ● 43.6% | ● 54.5% | ● 37.9% | ● 65.8% | ● 50.4% | ● 1.13 | ● 93.4% | 2 | 2 | 3 | 0 |
| Tri-County CC | ● 49.4% | ● 77.0% | ● 34.3% | ● 67.4% | ● 52.7% | ● 0.82 | ● 79.1% | 2 | 1 | 4 | 0 |
| Vance-Granville CC | ● 39.6% | ● 67.4% | ● 31.8% | ● 68.2% | ● 48.3% | ● 0.90 | ● 88.3% | 1 | 1 | 5 | 0 |
| Wake TCC | ● 41.0% | ● 60.0% | ● 43.2% | ● 70.8% | ● 47.3% | ● 1.12 | ● 90.1% | 2 | 2 | 3 | 0 |
| Wayne CC | ● 48.7% | ● 69.4% | ● 47.9% | ● 69.9% | ● 54.7% | ● 1.00 | ● 88.9% | 3 | 4 | 0 | 0 |
| Western Piedmont CC | ● 35.7% | ● 70.3% | ● 51.4% | ● 67.5% | ● 47.2% | ● 1.12 | ● 85.4% | 3 | 1 | 3 | 0 |
| Wilkes CC | ● 52.5% | ● 64.5% | ● 53.7% | ● 67.0% | ● 49.4% | ● 0.93 | ● 83.1% | 2 | 2 | 3 | 0 |
| Wilson CC | ● 28.9% | ● 55.5% | ● 49.6% | ● 67.3% | ● 47.6% | ● 0.95 | ●</ | | | | |

1. Basic Skills Student Progress

Purpose

To ensure individuals with low literacy skills are progressing academically toward credential or employment

Description

Percentage of Periods of Participation (PoP) with at least one Measurable Skill Gain (MSG)

Calculation

Denominator: Number of Periods of Participation (PoP) during the Basic Skills program year (July 1 to June 30). A PoP begins each time a student enrolls in adult education, accumulates at least 12 contact hours, and then exits the program. Subsequent periods occur when a student re-enters the program after 90 days have lapsed since the person last received services and accumulates 12 or more contact hours. If there is no exit, the PoP continues to the next program year.

Numerator: Based on the denominator, number of periods of participation in which at least one measurable skill gain was achieved.

- **Pre and Post testing:** The student scores high enough on an NRS approved posttest to place into a higher educational functioning level than indicated by the student's pretest.
- **Adult High School Credits:** The student enters an Adult High School (AHS) program with less than 75% of the required AHS credits and obtained enough AHS credits to exceed the 75% threshold prior to the end of the program year (June 30)
- **Post-Secondary Enrollment:** The student exits the program and subsequently enrolls in post-secondary education prior to the end of the program year (June 30). Post-secondary enrollment is verified by data matching to the National Student Clearinghouse and the NCCCS Data Warehouse.
- **High School Equivalency Test Graduate:** The student achieves a passing score on State-approved high school equivalency tests (GED, HiSet, or TASC) prior to the end of the program year (June 30). Credit is given based on matching student records to a passers database populated by the test vendors. Matching occurs based on an exact match of first name, last name and date of birth and/or the HSEID.
- **Adult High School Graduate:** The student completes the requirements of the Adult High School program and is issued an adult high school diploma prior to the end of the program year (June 30).

1. Basic Skills Student Progress (continued)

Data Sources

LEIS annual data file
Comprehensive Curriculum Student Report (Formerly known as CRPFA)
Continuing Education data file

Additional Details

Baseline and excellence levels were calculated based on one year of institutional outcomes (2017-18 program year).

Year-to-Year Changes

The measure has now been expanded to track Measurable Skill Gains (MSG) within a Period of Participation (PoP) as opposed to within the program year. There are five ways to achieve a MSG and there can be more than one PoP within the program year.

Excellence level: 50.6%

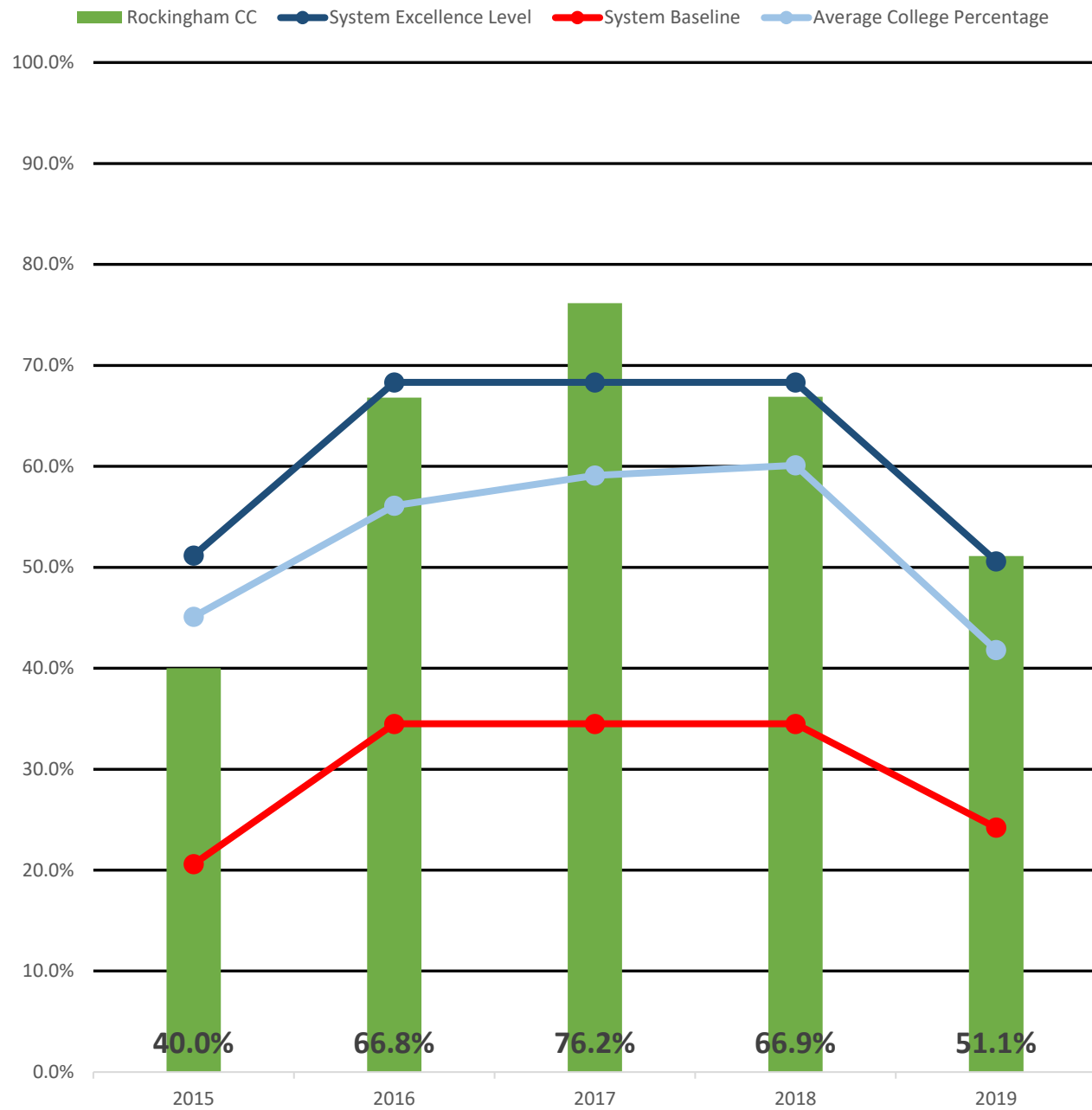
Baseline level: 24.2%

Peer Group Average: 40.0%

Average College Percentage: 41.8%

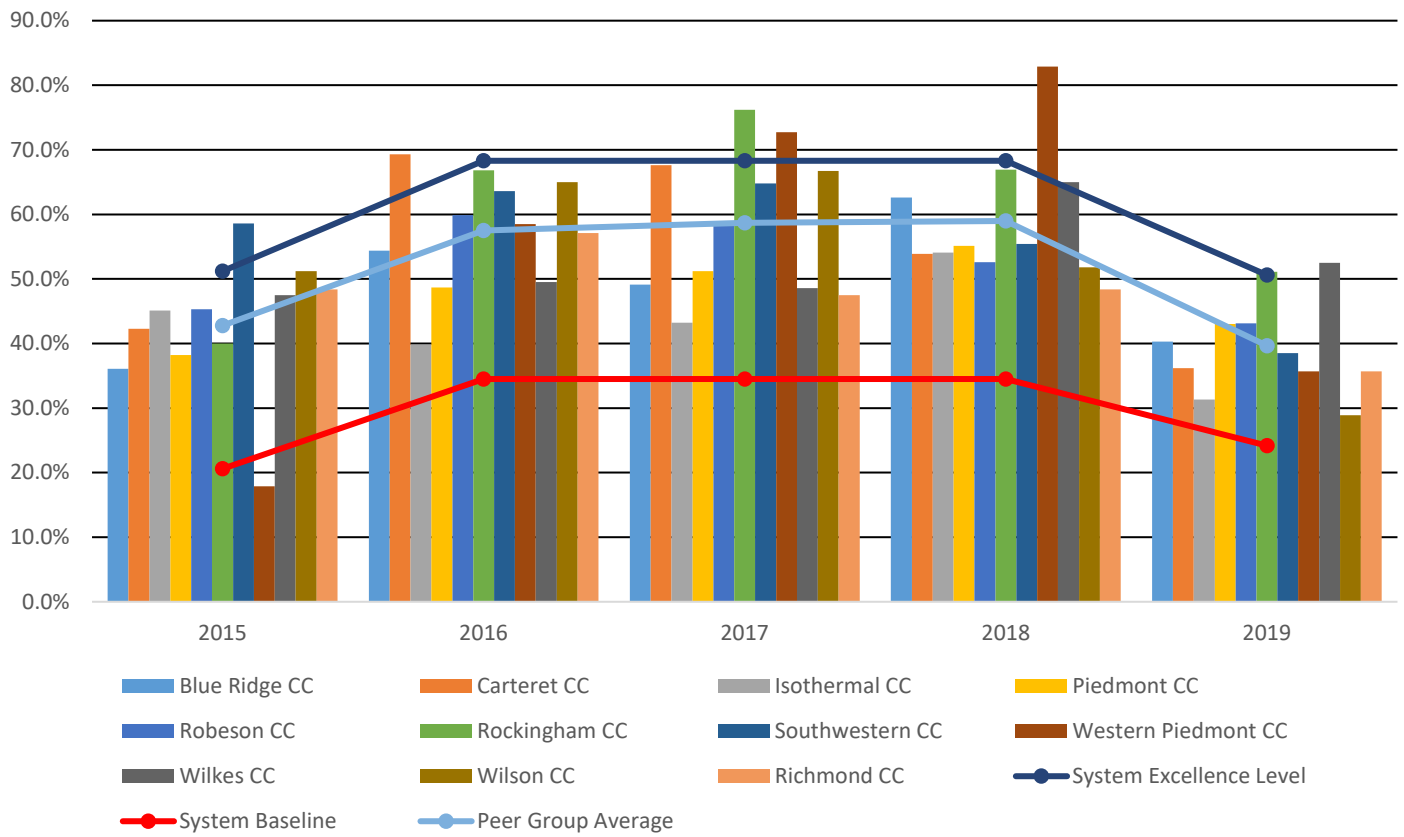
RCC: 51.1%

Basic Skills Progress - RCC Performance Measures 2015-2019



| Basic Skills Progress | | | | | |
|-----------------------------------|-------|-------|-------|-------|-------|
| | 2015 | 2016 | 2017 | 2018 | 2019 |
| Rockingham CC | 40.0% | 66.8% | 76.2% | 66.9% | 51.1% |
| System Excellence Level | 51.2% | 68.3% | 68.3% | 68.3% | 50.6% |
| System Baseline | 20.6% | 34.5% | 34.5% | 34.5% | 24.2% |
| Average College Percentage | 45.1% | 56.1% | 59.1% | 60.1% | 41.8% |

Basic Skills Progress - Peer Group Performance Measures 2015-2019



| Basic Skills Progress - Peer Group | | | | | |
|------------------------------------|--------------|--------------|--------------|--------------|--------------|
| | 2015 | 2016 | 2017 | 2018 | 2019 |
| System Excellence Level | 51.2% | 68.3% | 68.3% | 68.3% | 50.6% |
| System Baseline | 20.6% | 34.5% | 34.5% | 34.5% | 24.2% |
| Peer Group Average | 42.8% | 57.5% | 58.7% | 59.0% | 39.7% |
| Blue Ridge CC | 36.1% | 54.4% | 49.1% | 62.6% | 40.3% |
| Carteret CC | 42.3% | 69.3% | 67.6% | 53.9% | 36.2% |
| Isothermal CC | 45.1% | 39.8% | 43.2% | 54.1% | 31.3% |
| Piedmont CC | 38.2% | 48.7% | 51.2% | 55.1% | 43.0% |
| Richmond CC | 48.4% | 57.1% | 47.5% | 48.4% | 35.7% |
| Robeson CC | 45.3% | 59.9% | 58.2% | 52.6% | 43.1% |
| Rockingham CC | 40.0% | 66.8% | 76.2% | 66.9% | 51.1% |
| Southwestern CC | 58.6% | 63.6% | 64.8% | 55.4% | 38.5% |
| Western Piedmont CC | 17.9% | 58.5% | 72.7% | 82.9% | 35.7% |
| Wilkes CC | 47.5% | 49.5% | 48.6% | 65.0% | 52.5% |
| Wilson CC | 51.2% | 65.0% | 66.7% | 51.8% | 28.9% |

2. Student Success Rate in College-Level English Courses

Purpose

To ensure students are successfully completing a credit-bearing English course within their first three academic years

Description

Percentage of first-time associate degree seeking and transfer pathway students passing a credit-bearing English course with a "C" or better within three years of their first fall term of enrollment

Calculation

Denominator: First-time fall associate degree and transfer pathway students (i.e., students with a curriculum code that begins with an A or P) during their first fall.

Numerator: Of those in the denominator, the number earning a standard letter grade of A, B, C, or P in at least one credit bearing (course number ≥ 100) English course within three years (by the end of the third summer term). *Note: See appendix for new first-time fall cohort definition*

Data Sources

Comprehensive Curriculum Student Report (Formerly known as CRPFA)
National Student Clearinghouse

Additional Details

Students were followed for 10 consecutive terms (including the summer terms and the preceding summer, if applicable).

Baseline and excellence levels were calculated based on three years of institutional outcomes (2013, 2014, and 2015 cohorts).

Year-to-Year Changes

The measure has been expanded to within 3 academic years instead of 2 and explicitly includes the letter grade 'P' as a successful completion grade.

Excellence level: 66.6%

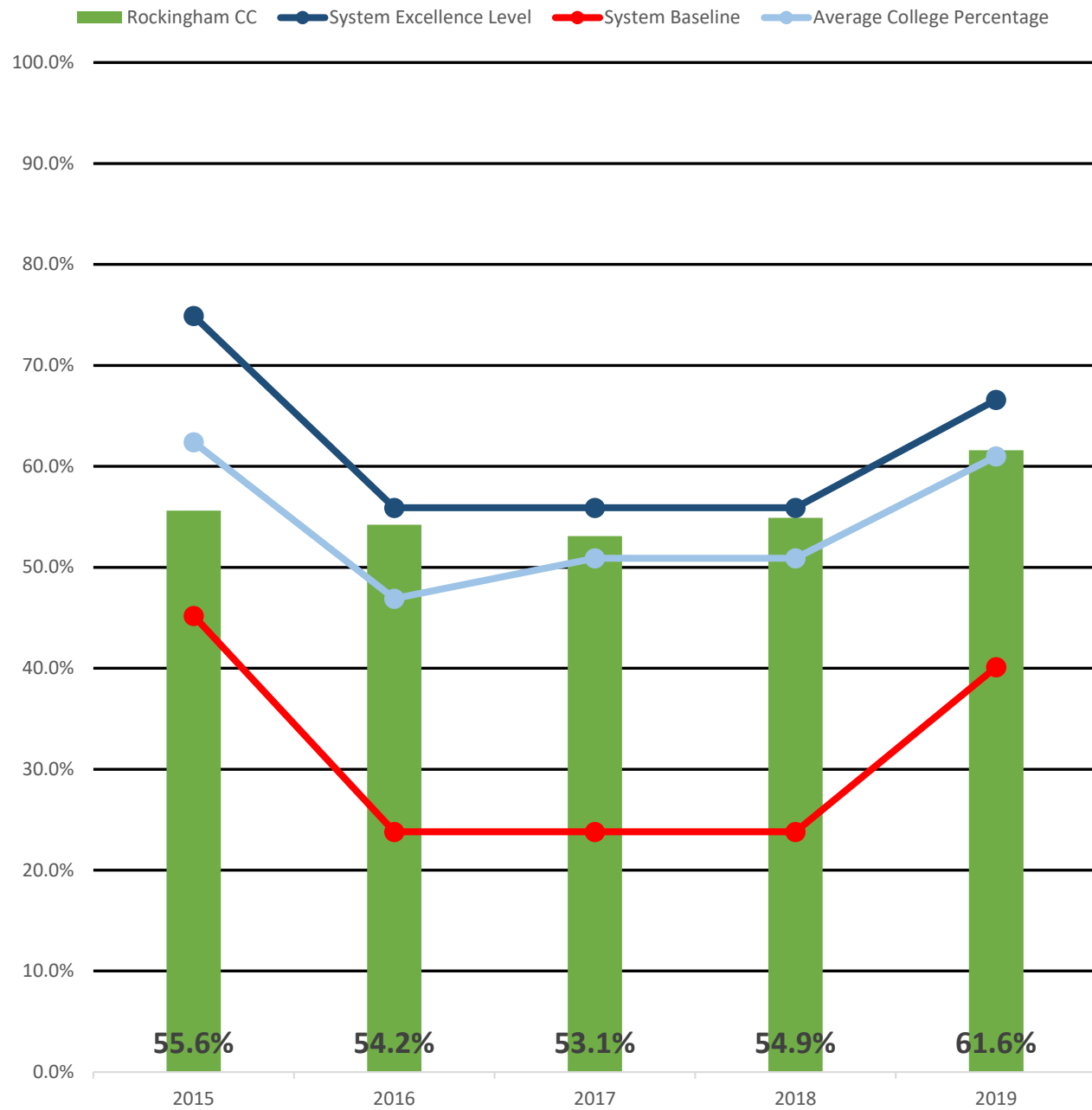
Baseline level: 40.1%

Peer Group Average: 60.0%

Average College Percentage: 61.0%

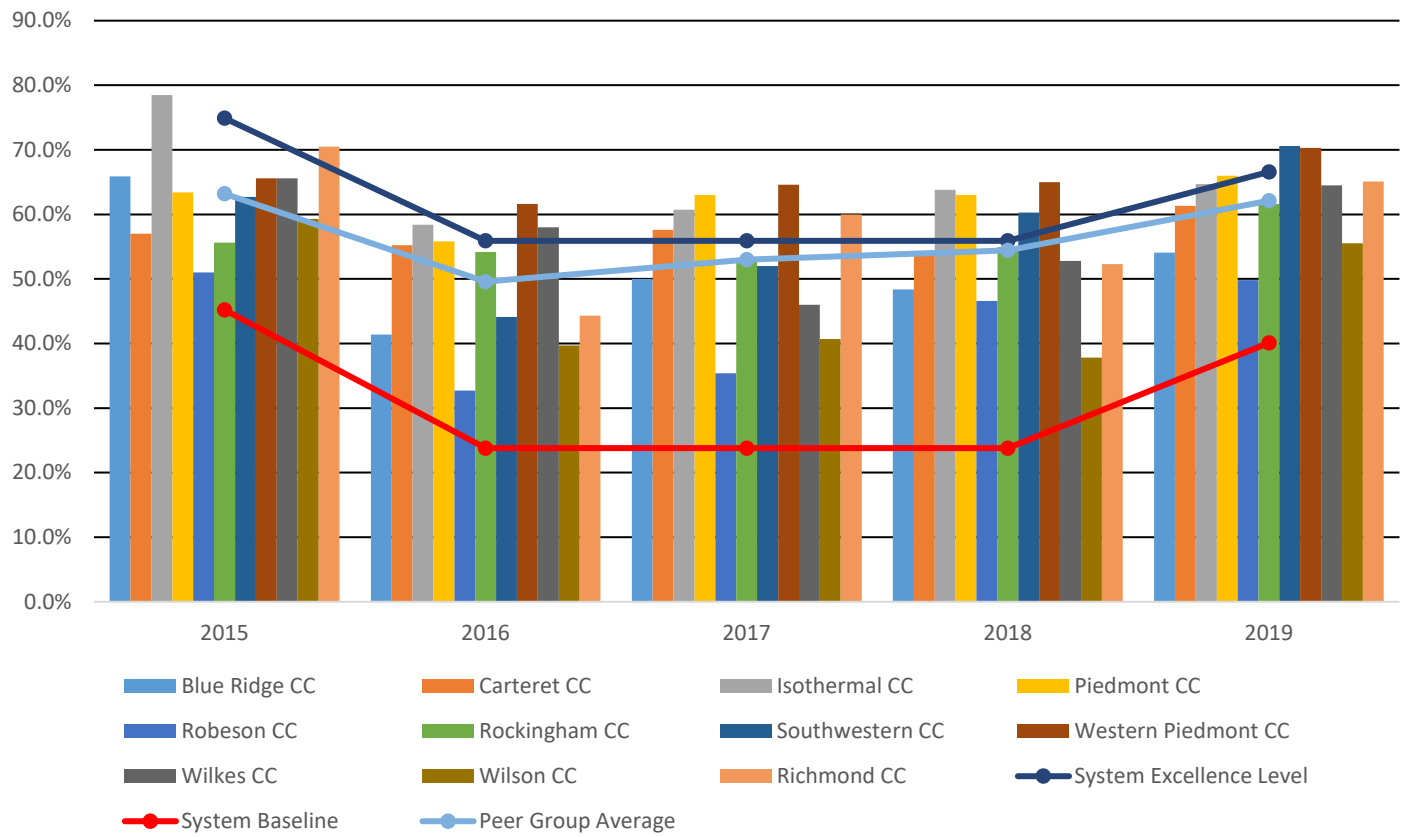
RCC: 61.6%

Credit English Success - RCC Performance Measures 2015-2019



| Credit English Success | | | | | |
|-----------------------------------|-------------|-------------|-------------|-------------|-------------|
| | 2015 | 2016 | 2017 | 2018 | 2019 |
| Rockingham CC | 55.6% | 54.2% | 53.1% | 54.9% | 61.6% |
| System Excellence Level | 74.9% | 55.9% | 55.9% | 55.9% | 66.6% |
| System Baseline | 45.2% | 23.8% | 23.8% | 23.8% | 40.1% |
| Average College Percentage | 62.4% | 46.9% | 50.9% | 50.9% | 61.0% |

Credit English Success - Peer Group Performance Measures 2015-2019



| Credit English Success - Peer Group | | | | | |
|--|--------------|--------------|--------------|--------------|--------------|
| | 2015 | 2016 | 2017 | 2018 | 2019 |
| System Excellence Level | 74.9% | 55.9% | 55.9% | 55.9% | 66.6% |
| System Baseline | 45.2% | 23.8% | 23.8% | 23.8% | 40.1% |
| Peer Group Average | 63.2% | 49.6% | 53.0% | 54.4% | 62.1% |
| Blue Ridge CC | 65.9% | 41.4% | 50.0% | 48.4% | 54.1% |
| Carteret CC | 57.0% | 55.2% | 57.6% | 53.7% | 61.3% |
| Isothermal CC | 78.5% | 58.4% | 60.7% | 63.8% | 64.7% |
| Piedmont CC | 63.4% | 55.8% | 63.0% | 63.0% | 66.0% |
| Richmond CC | 70.5% | 44.3% | 60.0% | 52.3% | 65.1% |
| Robeson CC | 51.0% | 32.7% | 35.4% | 46.6% | 49.8% |
| Rockingham CC | 55.6% | 54.2% | 53.1% | 54.9% | 61.6% |
| Southwestern CC | 62.7% | 44.1% | 52.0% | 60.3% | 70.6% |
| Western Piedmont CC | 65.6% | 61.6% | 64.6% | 65.0% | 70.3% |
| Wilkes CC | 65.6% | 58.0% | 46.0% | 52.8% | 64.5% |
| Wilson CC | 59.3% | 39.7% | 40.7% | 37.8% | 55.5% |

3. Student Success Rate in College-Level Math Courses

Purpose

To ensure students are successfully completing credit-bearing Math courses within their first three academic years

Description

Percentage of first-time fall associate degree seeking and transfer pathway students passing a credit-bearing Math course with a “C” or better within three years of their first term of enrollment

Calculation

Denominator: First-time fall associate degree and transfer pathway students (i.e., students with a curriculum code that begins with an A or P) during their first fall.

Numerator: Of those in the denominator, the number earning a standard letter grade of A, B, C, or P in at least one credit bearing (course number ≥ 100) Math course within three years (by the end of the third summer term). *Note: See appendix for new first-time fall cohort definition*

Data Sources

Comprehensive Curriculum Student Report (Formerly known as CRPFA)
National Student Clearinghouse

Additional Details

Students were followed for 10 consecutive terms (including the summer terms and the preceding summer, if applicable).

Baseline and excellence levels were calculated based on three years of institutional outcomes (2013, 2014, and 2015 cohorts).

Year-to-Year Changes

The measure has been expanded to within 3 academic years instead of 2 and explicitly includes the letter grade ‘P’ as a successful completion grade.

Excellence level: 46.2%

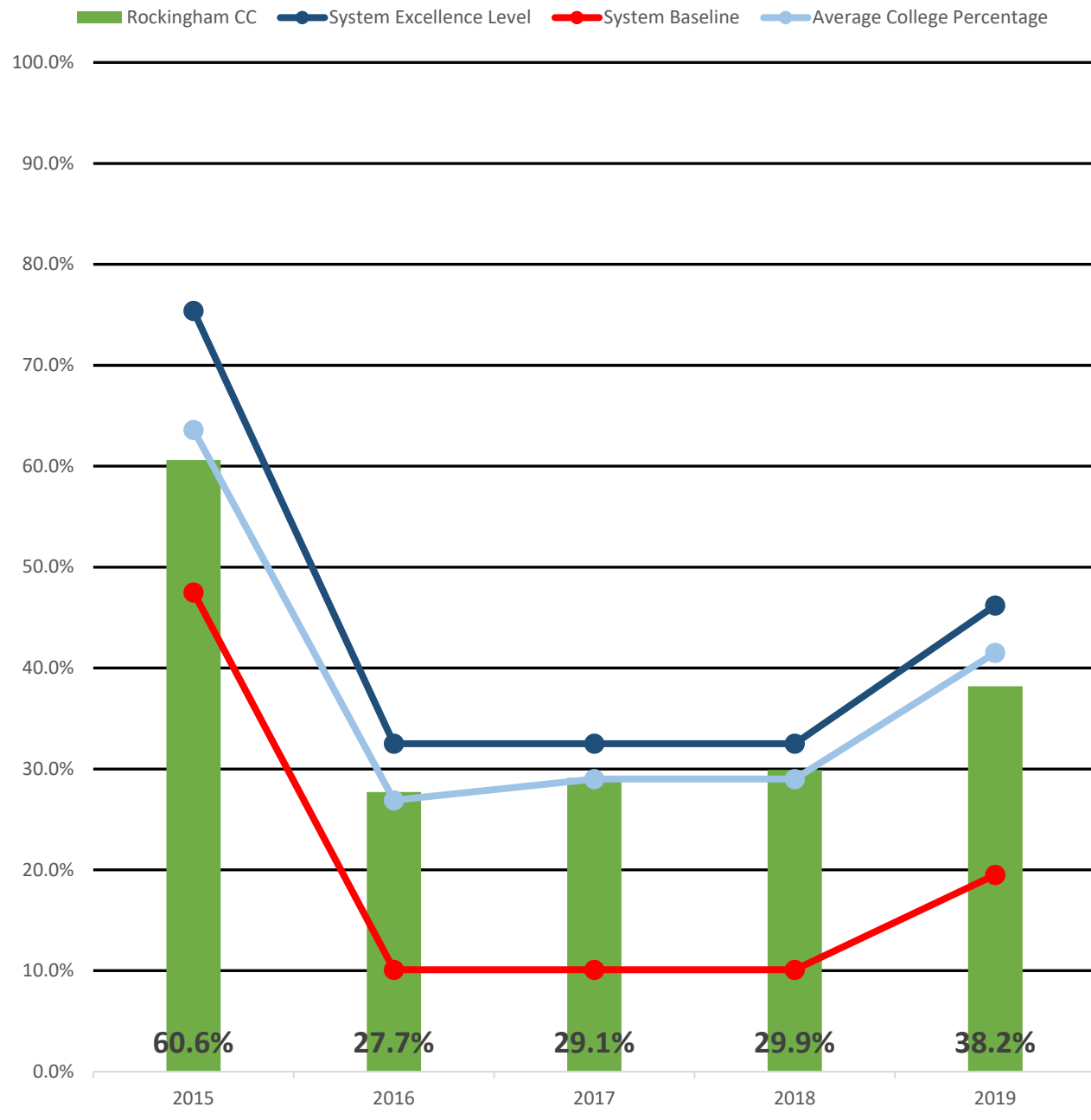
Baseline level: 19.5%

Peer Group Average: 41.9%

Average College Percentage: 41.5%

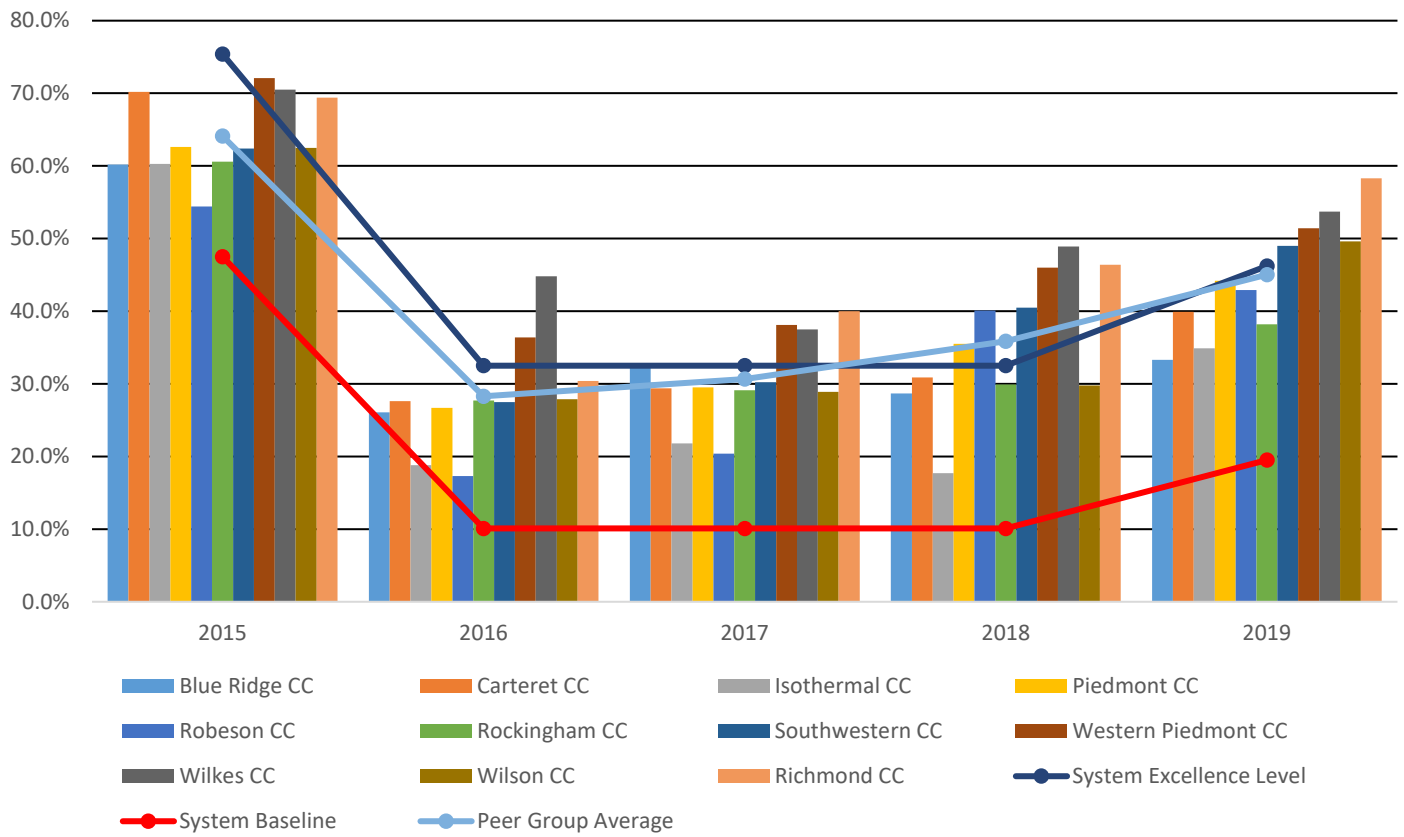
RCC: 38.2%

Credit Math Success - RCC Performance Measures 2015-2019



| Credit Math Success | | | | | |
|-----------------------------------|-------------|-------------|-------------|-------------|-------------|
| | 2015 | 2016 | 2017 | 2018 | 2019 |
| Rockingham CC | 60.6% | 27.7% | 29.1% | 29.9% | 38.2% |
| System Excellence Level | 75.4% | 32.5% | 32.5% | 32.5% | 46.2% |
| System Baseline | 47.5% | 10.1% | 10.1% | 10.1% | 19.5% |
| Average College Percentage | 63.6% | 26.9% | 29.0% | 29.0% | 41.5% |

Credit Math Success - Peer Group Performance Measures 2015-2019



| Credit Math Success - Peer Group | | | | | |
|---|--------------|--------------|--------------|--------------|--------------|
| | 2015 | 2016 | 2017 | 2018 | 2019 |
| System Excellence Level | 75.4% | 32.5% | 32.5% | 32.5% | 46.2% |
| System Baseline | 47.5% | 10.1% | 10.1% | 10.1% | 19.5% |
| Peer Group Average | 64.1% | 28.3% | 30.7% | 35.9% | 45.0% |
| Blue Ridge CC | 60.2% | 26.1% | 32.5% | 28.7% | 33.3% |
| Carteret CC | 70.2% | 27.6% | 29.4% | 30.9% | 39.9% |
| Isothermal CC | 60.3% | 18.8% | 21.8% | 17.7% | 34.9% |
| Piedmont CC | 62.6% | 26.7% | 29.5% | 35.5% | 44.2% |
| Richmond CC | 69.4% | 30.4% | 40.0% | 46.4% | 58.3% |
| Robeson CC | 54.4% | 17.3% | 20.4% | 40.1% | 42.9% |
| Rockingham CC | 60.6% | 27.7% | 29.1% | 29.9% | 38.2% |
| Southwestern CC | 62.4% | 27.5% | 30.2% | 40.5% | 49.0% |
| Western Piedmont CC | 72.1% | 36.4% | 38.1% | 46.0% | 51.4% |
| Wilkes CC | 70.5% | 44.8% | 37.5% | 48.9% | 53.7% |
| Wilson CC | 62.5% | 27.9% | 28.9% | 29.8% | 49.6% |

4. First Year Progression

Purpose

To ensure first-year students are making progress toward credential completion

Description

Percentage of first-time fall credential-seeking students who graduate prior to or enroll in postsecondary education during the subsequent fall term

Calculation

Denominator: First-time fall credential-seeking curriculum students.

Numerator: Of those in the denominator, the number who graduate with a postsecondary credential prior to the subsequent fall term or return to post-secondary education during the subsequent fall term. *Note: See appendix for new first-time fall cohort definition*

Data Sources

Comprehensive Curriculum Student Report (Formerly known as CRPFA)
Graduation Extract data file
National Student Clearinghouse

Additional Details

Students were followed for four consecutive terms (including the summer term and the preceding summer, if applicable).

Baseline and excellence levels were calculated based on three years of institutional outcomes (2015, 2016, and 2017 cohorts).

Year-to-Year Changes

There is no longer a credit-hour minimum. The measure now just tracks first-time students who graduate or enroll in postsecondary education in the subsequent fall term, as opposed to meeting a minimum successful credit-hour completion threshold within the first year.

Excellence level: 71.9%

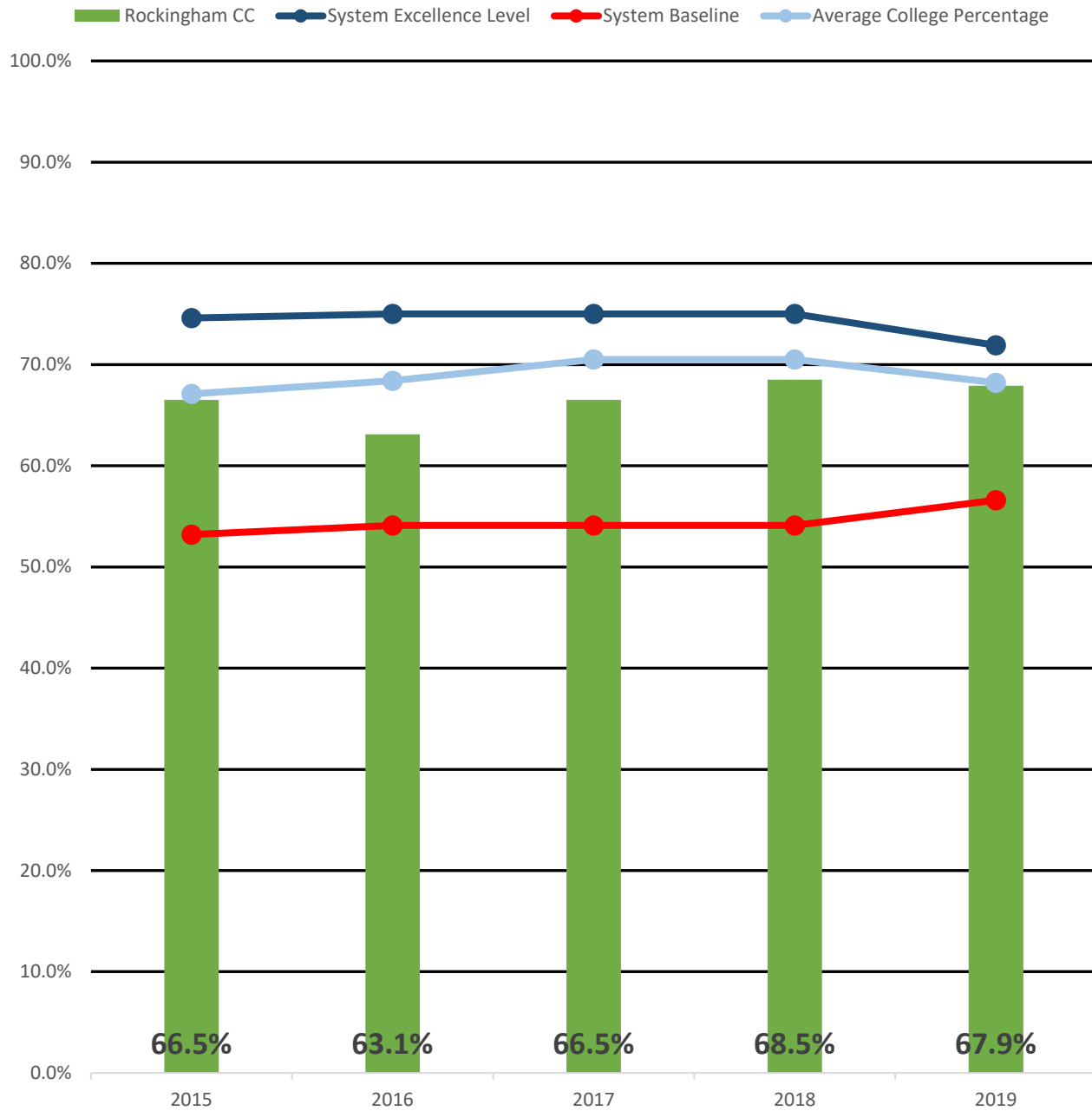
Baseline level: 56.6%

Peer Group Average: 66.4%

Average College Percentage: 68.2%

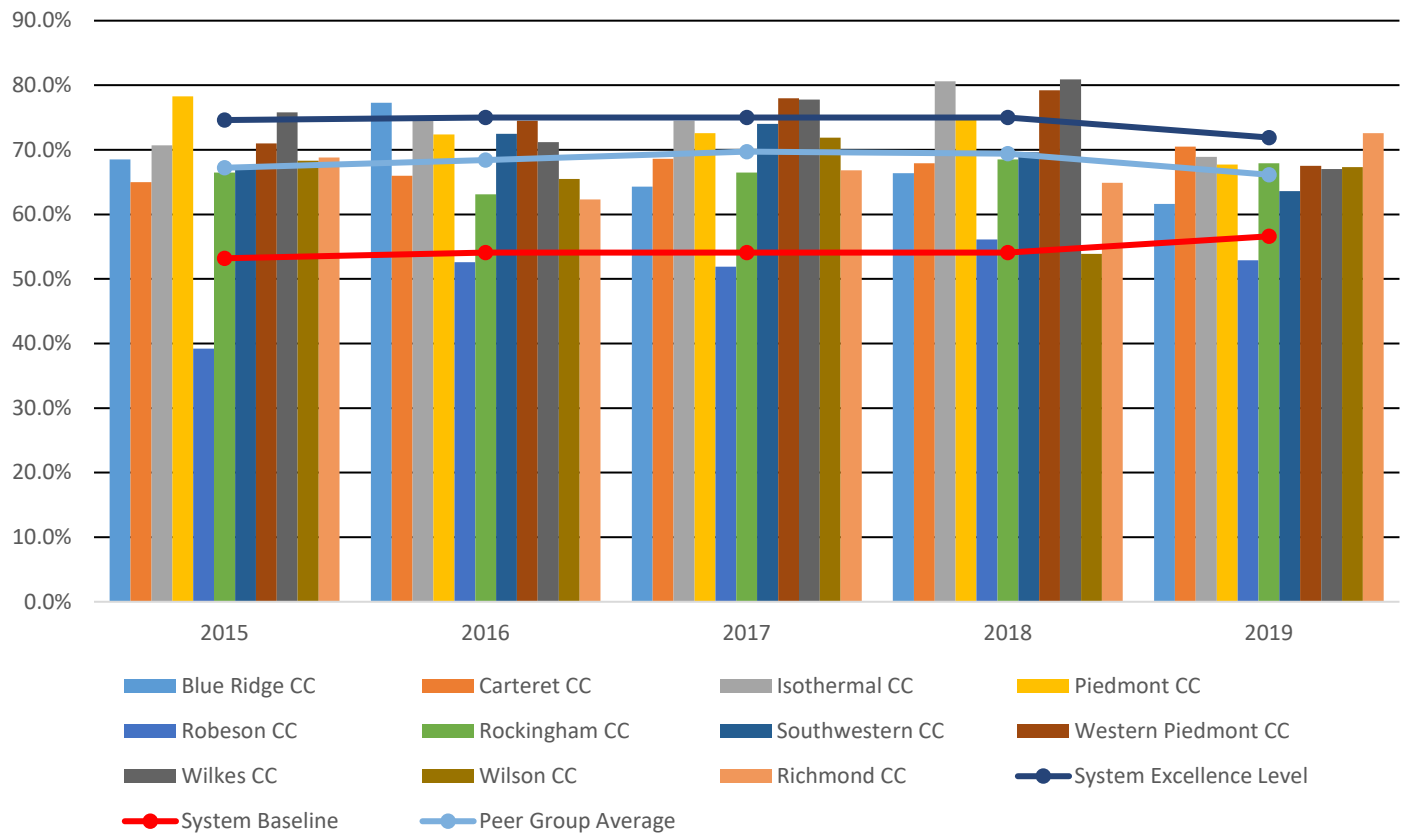
RCC: 67.9%

First Year Progression - RCC Performance Measures 2015-2019



| First Year Progression | | | | | |
|-----------------------------------|--------------|--------------|--------------|--------------|--------------|
| | 2015 | 2016 | 2017 | 2018 | 2019 |
| Rockingham CC | 66.5% | 63.1% | 66.5% | 68.5% | 67.9% |
| System Excellence Level | 74.6% | 75.0% | 75.0% | 75.0% | 71.9% |
| System Baseline | 53.2% | 54.1% | 54.1% | 54.1% | 56.6% |
| Average College Percentage | 67.1% | 68.4% | 70.5% | 70.5% | 68.2% |

First Year Progression - Peer Group Performance Measures 2015-2019



| First Year Progression - Peer Group | | | | | |
|--|--------------|--------------|--------------|--------------|--------------|
| | 2015 | 2016 | 2017 | 2018 | 2019 |
| System Excellence Level | 74.6% | 75.0% | 75.0% | 75.0% | 71.9% |
| System Baseline | 53.2% | 54.1% | 54.1% | 54.1% | 56.6% |
| Peer Group Average | 67.2% | 68.4% | 69.7% | 69.4% | 66.1% |
| Blue Ridge CC | 68.5% | 77.3% | 64.3% | 66.4% | 61.6% |
| Carteret CC | 65.0% | 66.0% | 68.6% | 67.9% | 70.5% |
| Isothermal CC | 70.7% | 75.1% | 74.5% | 80.6% | 68.9% |
| Piedmont CC | 78.3% | 72.4% | 72.6% | 75.3% | 67.7% |
| Richmond CC | 68.8% | 62.3% | 66.8% | 64.9% | 72.6% |
| Robeson CC | 39.2% | 52.6% | 51.9% | 56.1% | 52.9% |
| Rockingham CC | 66.5% | 63.1% | 66.5% | 68.5% | 67.9% |
| Southwestern CC | 67.3% | 72.5% | 74.0% | 69.6% | 63.6% |
| Western Piedmont CC | 71.0% | 74.5% | 78.0% | 79.2% | 67.5% |
| Wilkes CC | 75.8% | 71.2% | 77.8% | 80.9% | 67.0% |
| Wilson CC | 68.3% | 65.5% | 71.9% | 53.9% | 67.3% |

5. Curriculum Completion

Purpose

To ensure student completion and/or persistence toward a post-secondary credential in a timely manner.

Description

Percentage of first-time fall credential-seeking curriculum students who have graduated, transferred, or are still enrolled during the fourth academic year with 42 successfully completed non-developmental hours.

Calculation

Denominator: First-time fall curriculum students

Numerator: Of those in the denominator, the number of students who have graduated, transferred, or are still enrolled during the fourth academic year (fall, spring, or summer) with at least 42 successfully completed non-developmental hours.

To be successful, students must complete one or more of the following:

- **Graduation:** Graduated from a North Carolina Community College credential program (A, D, or C) before the end of the 4th summer term following the first fall semester.
- **Transfer:** Transferred to a 4-year college as indicated in the National Student Clearinghouse database at any point through the end of the 4th summer term following the first fall semester.
- **Persistence:** Student is enrolled in an NCCCS college during the 4th academic year (fall, spring or summer) and has successfully completed at least 42 non-developmental credit hours by the end of the summer term. Successful completion is defined as achieving a course standard letter grade of A, B, C, or P. *Note: See appendix for new first-time fall cohort definition*

Data Sources

Comprehensive Curriculum Student Report (Formerly known as CRPFA)

Graduation Extract data file

National Student Clearinghouse

Additional Details

Students were followed for 13 consecutive terms (including the summer terms and the preceding summer, if applicable).

Baseline and excellence levels were calculated based on three years of institutional outcomes (2012, 2013, and 2014 cohorts).

Year-to-Year Changes

The measure has been reduced to within 4 academic years instead of 6 and increased to 42 non-developmental hours versus 36.

Excellence level: 52.7%

Baseline level: 34.1%

Peer Group Average: 47.4%

Average College Percentage: 49.3%

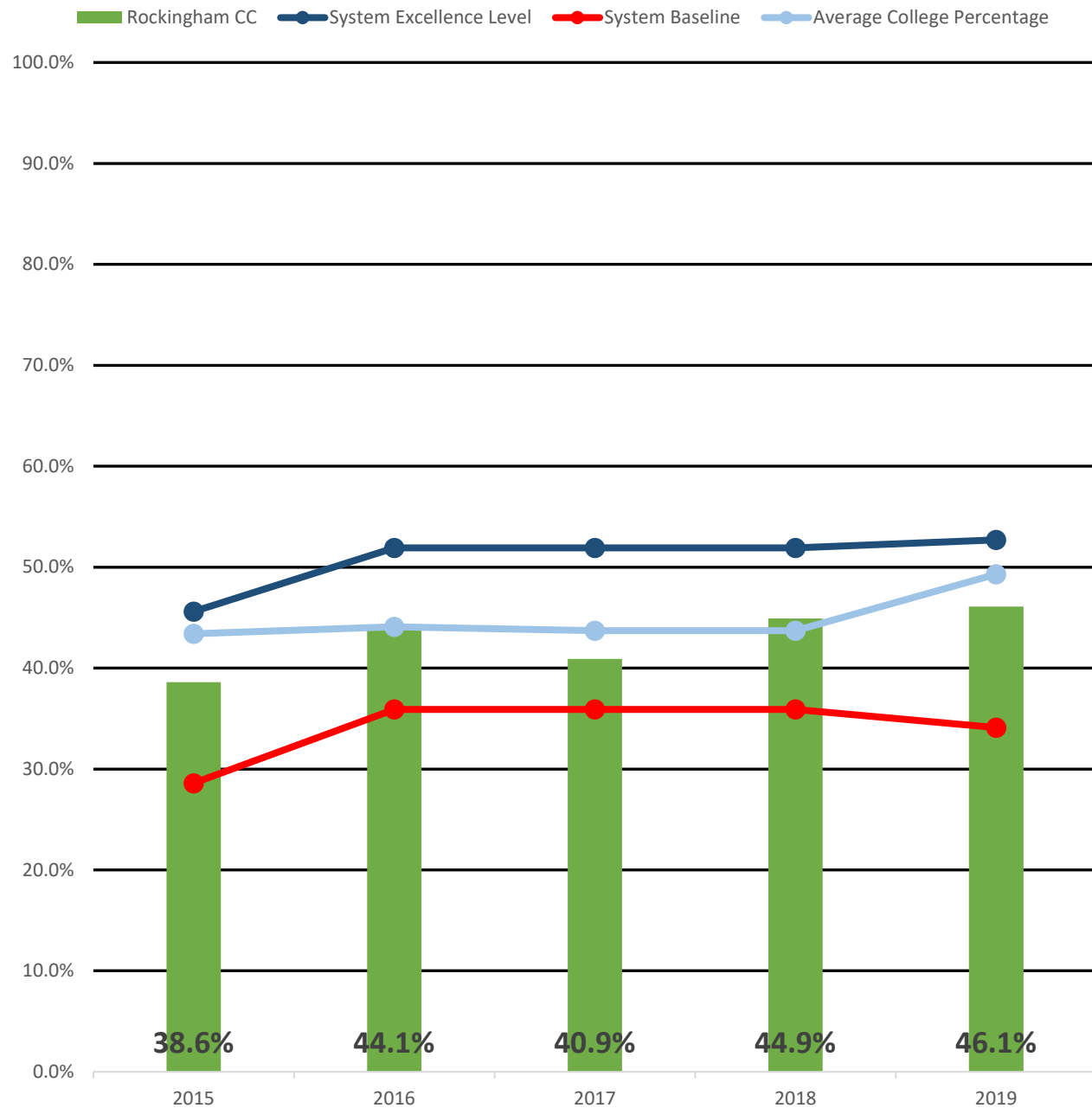
RCC: 46.1%

Prepared by the Office of Technology and Institutional Effectiveness

Source: NCCCS Performance Measures for Student Success

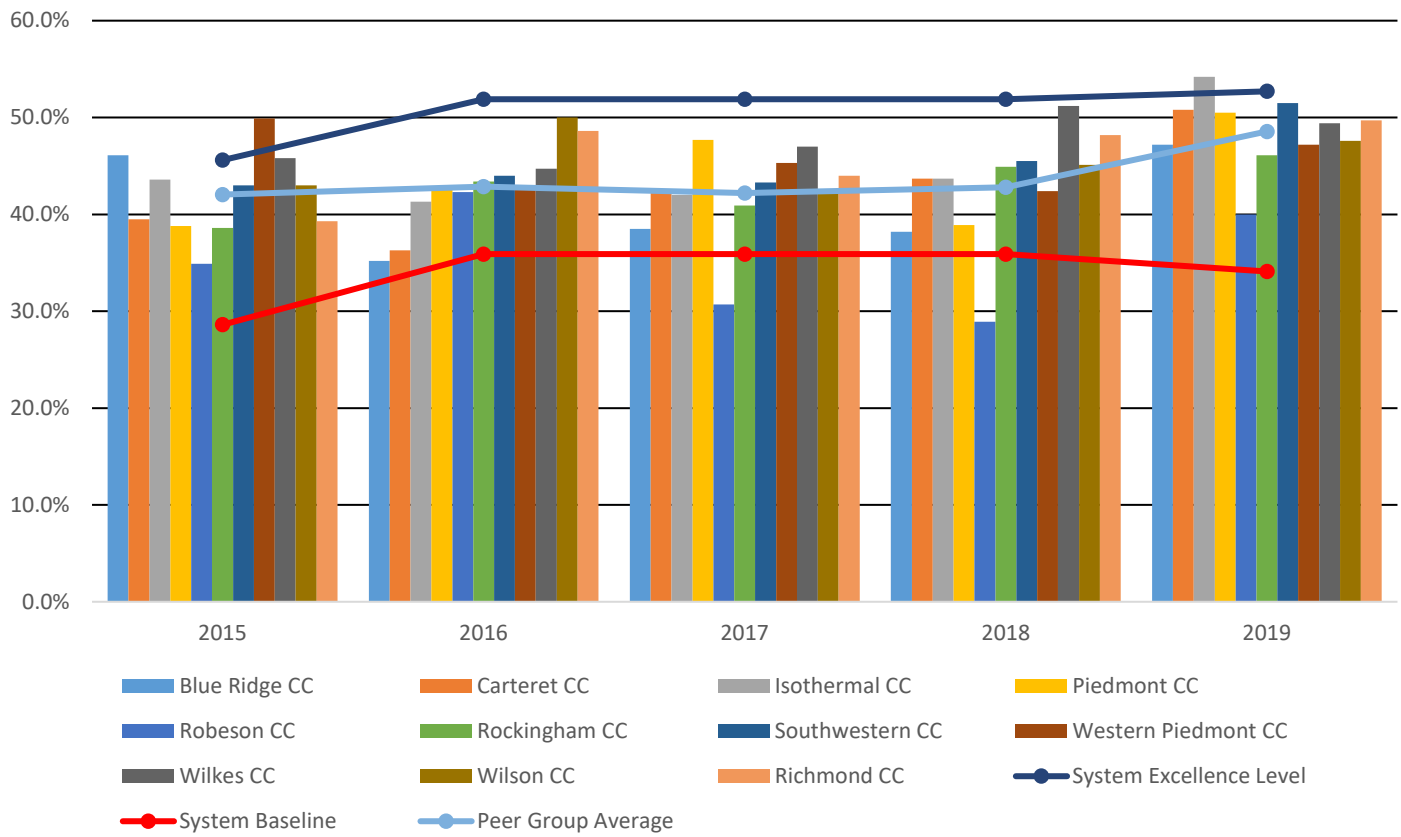
September, 2019

Curriculum Completion Rate - RCC Performance Measures 2015-2019



| Curriculum Completion Rate | | | | | |
|-----------------------------------|-------|-------|-------|-------|-------|
| | 2015 | 2016 | 2017 | 2018 | 2019 |
| Rockingham CC | 38.6% | 44.1% | 40.9% | 44.9% | 46.1% |
| System Excellence Level | 45.6% | 51.9% | 51.9% | 51.9% | 52.7% |
| System Baseline | 28.6% | 35.9% | 35.9% | 35.9% | 34.1% |
| Average College Percentage | 43.4% | 44.1% | 43.7% | 43.7% | 49.3% |

Curriculum Completion Rate - Peer Group Performance Measures 2015-2019



| Curriculum Completion Rate - Peer Group | | | | | |
|--|--------------|--------------|--------------|--------------|--------------|
| | 2015 | 2016 | 2017 | 2018 | 2019 |
| System Excellence Level | 45.6% | 51.9% | 51.9% | 51.9% | 52.7% |
| System Baseline | 28.6% | 35.9% | 35.9% | 35.9% | 34.1% |
| Peer Group Average | 42.0% | 42.9% | 42.2% | 42.8% | 48.6% |
| Blue Ridge CC | 46.1% | 35.2% | 38.5% | 38.2% | 47.2% |
| Carteret CC | 39.5% | 36.3% | 42.2% | 43.7% | 50.8% |
| Isothermal CC | 43.6% | 41.3% | 42.0% | 43.7% | 54.2% |
| Piedmont CC | 38.8% | 42.7% | 47.7% | 38.9% | 50.5% |
| Richmond CC | 39.3% | 48.6% | 44.0% | 48.2% | 49.7% |
| Robeson CC | 34.9% | 42.3% | 30.7% | 28.9% | 40.0% |
| Rockingham CC | 38.6% | 43.4% | 40.9% | 44.9% | 46.1% |
| Southwestern CC | 43.0% | 44.0% | 43.3% | 45.5% | 51.5% |
| Western Piedmont CC | 49.9% | 43.0% | 45.3% | 42.4% | 47.2% |
| Wilkes CC | 45.8% | 44.7% | 47.0% | 51.2% | 49.4% |
| Wilson CC | 43.0% | 50.0% | 42.6% | 45.1% | 47.6% |

6. Licensure and Certification Passing Rate Index

Purpose

To ensure programmatic coursework prepares students to competently practice in their chosen profession.

Description

Weighted index score of first-time test-taker results on licensure and certification exams. Exams included in this measure are state mandated exams which candidates must pass before becoming active practitioners. Weights are based on the tier associated with the related instructional program.

Calculation

License Index Score (LIS): First time pass rate on an exam divided by the statewide first time pass rate on same exam

License Weighted Denominator (LWD): Number of first-time test-takers for an exam multiplied by the exam tier weight (Tier 1A = 1.30, Tier 1B = 1.15, Tier 2/3 = 1.00)

Total Weighted Denominator (TWD): Sum of License Weighted Denominators across all exams (LWD₁+LWD₂+LWD₃+...)

Total Weighted Numerator (TWN): Sum of the product of each License Index Score and their License Weighted Denominator [(LIS₁ × LWD₁) + (LIS₂ × LWD₂) + (LIS₃ × LWD₃) + ...]

Total Weighted Index Score: Total Weighted Numerator (TWN) divided by Total Weighted Denominator (TWD)

Data Sources

Tier 1A

Council of Interstate Testing
Dental Hygiene

NC Board of Occupational Therapy
Occupational Therapist Assistant

NC Board of Nursing
*Practical Nursing
Registered Nursing*

NC Board of Physical Therapy Examiners
Physical Therapist Assistant

American Registry of Radiologic Technologists
Radiography

Tier 1B

Federation of State Massage Therapy Boards
Massage & Body Work Therapist

NC Veterinary Medical Board
Veterinary Medicine Technology

Tier2

NC Department of Justice, Criminal Justice Standards Division
Basic Law Enforcement Training

NC Department of Justice, Sheriff's Training & Standards Division
Detention Officer

NC Office of Emergency Medical Services
*AEMT
EMR
EMT
EMT-P*

Tier2

NC Department of Health and Human Services
Nurse Aide I

NC Board of Barber Examiners
Barber

DL Roope Administrations Inc.
*Apprentice
Cosmetology
Esthetician
Manicurist*

NC Real Estate Commission
Provisional Real Estate Broker

Tier 3

NC Department of Insurance, Office of State Fire Marshall - Code Officials
Qualification Board
*Building Inspector
Electrical Inspector
Fire Inspector
Mechanical Inspector
Plumbing Inspector*

RCC Offers

Tier 1A - NC Board of Nursing - Practical Nursing, Registered Nursing

Tier 2 - NC Department of Justice, Criminal Justice Standards Division - Basic Law Enforcement Training
NC Office of Emergency Medical Services – EMT, EMT-P, EMR
NC Department of Health and Human Services - Nurse Aide I
DL Roope Administrations Inc – Cosmetology, Apprentice

6. Licensure and Certification Passing Rate Index (continued)

Additional Details

The number of first-time test-takers and the number passing were provided to the System Office by agencies issuing the license or certification. Depending on the exam, data may be provided on a fiscal or calendar year. Exams are listed above *in italics*. Selection of exams based on:

- Requirement to pass in order to practice in NC
- Strong association with an occupation (not part of a job)
- At least 50 test-takers statewide in 2017-18
- At least 5 colleges with test-takers in 2017-18

Baseline and excellence levels were calculated based on one year of institutional outcomes (2017-18).

Year-to-Year Changes

The Licensure and certification exams are now weighted according to tier. The measure now reports an index score instead of pass rate.

*For the purposes of this report, RCC has converted the index score to a percentage for consistency in comparison over years and across all measures.

Excellence level: 1.07

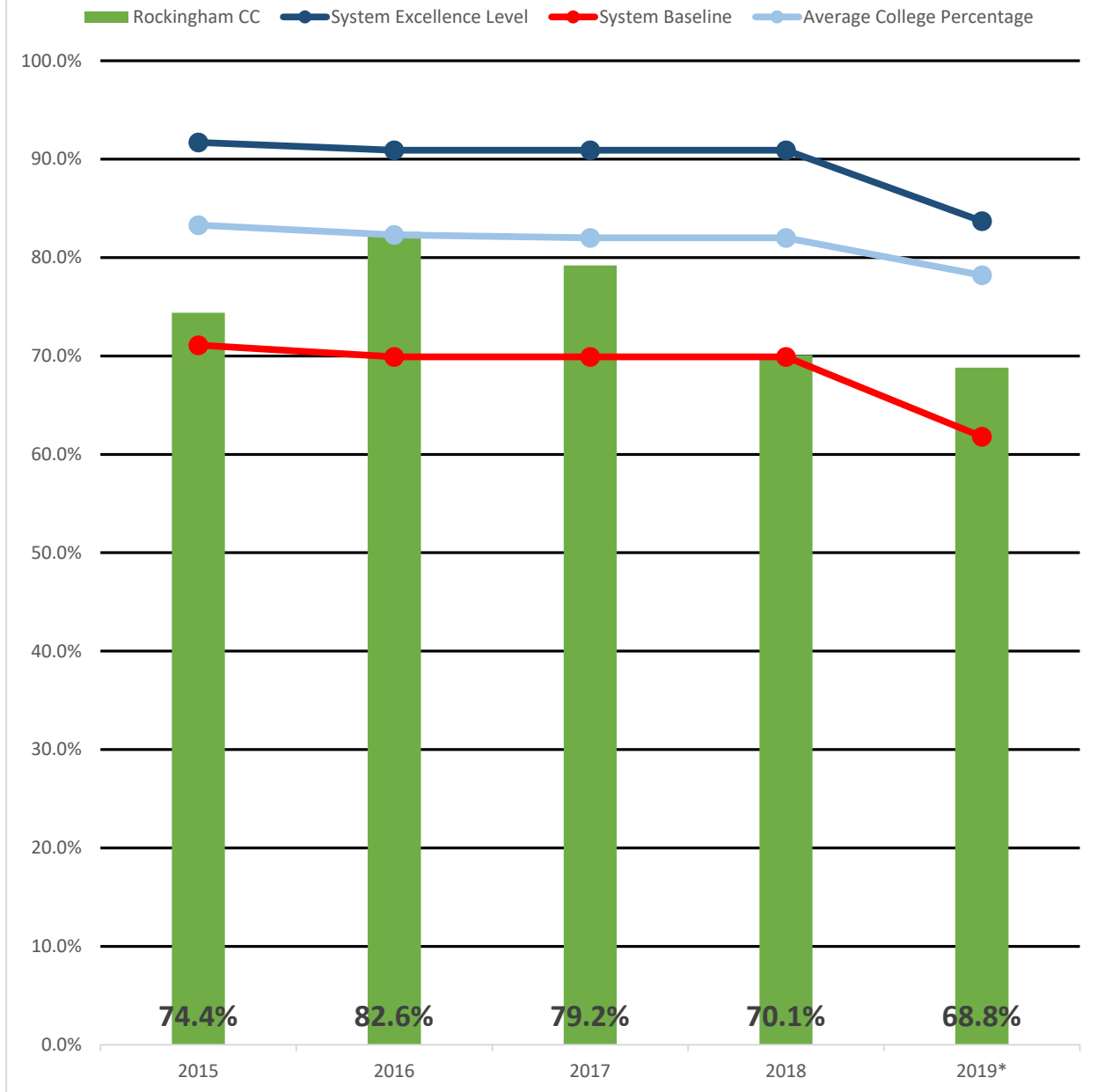
Baseline level: 0.79

Peer Group Average: 0.96

Average College Index: 0.98

RCC: 0.88

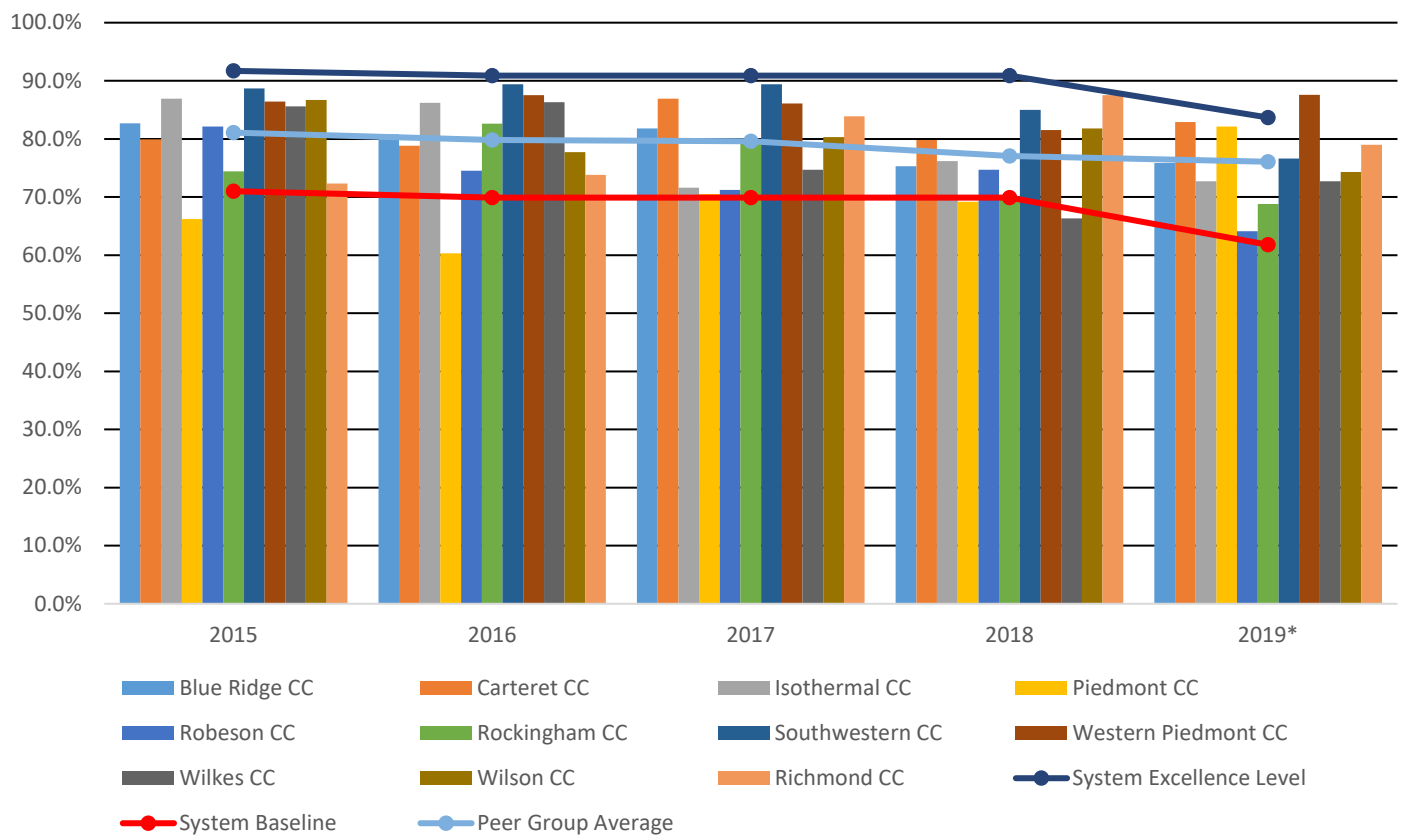
Licensure Passing Rate - RCC (Legacy) Performance Measures 2015-2019



| Licensure Passing Rate (Legacy) | | | | | |
|--|--------------|--------------|--------------|--------------|--------------|
| | 2015 | 2016 | 2017 | 2018 | 2019* |
| Rockingham CC | 74.4% | 82.6% | 79.2% | 70.1% | 68.8% |
| System Excellence Level | 91.7% | 90.9% | 90.9% | 90.9% | 83.7% |
| System Baseline | 71.1% | 69.9% | 69.9% | 69.9% | 61.8% |
| Average College Percentage | 83.3% | 82.3% | 82.0% | 82.0% | 78.2% |

*For the purposes of this report, RCC has converted the index score to a percentage for consistency in comparison over years and across all measures.

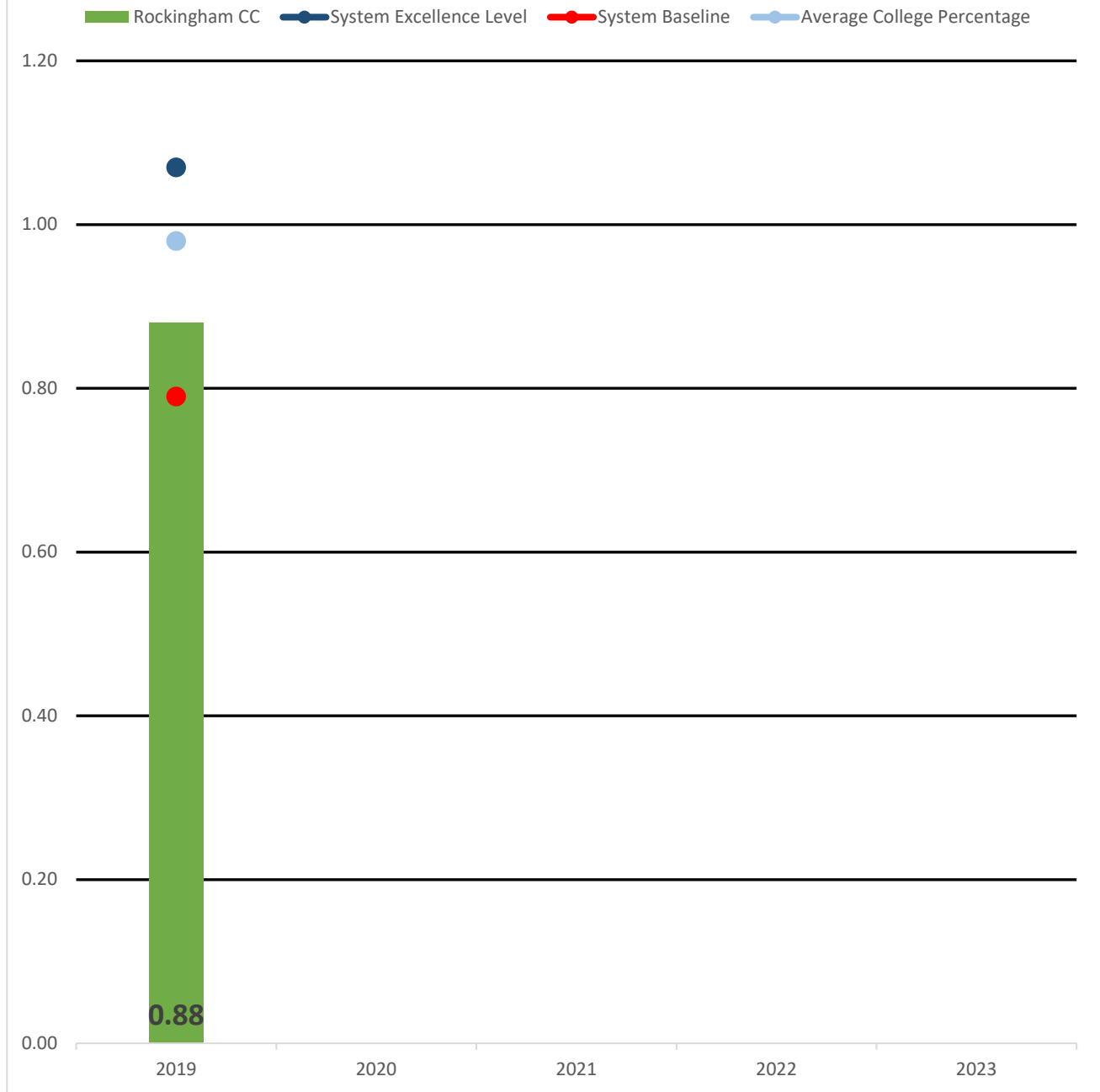
Licensure Passing Rate - Peer Group (Legacy) Performance Measures 2015-2019



| Licensure Passing Rate - Peer Group (Legacy) | | | | | |
|--|--------------|--------------|--------------|--------------|--------------|
| | 2015 | 2016 | 2017 | 2018 | 2019* |
| System Excellence Level | 91.7% | 90.9% | 90.9% | 90.9% | 83.7% |
| System Baseline | 71.0% | 69.9% | 69.9% | 69.9% | 61.8% |
| Peer Group Average | 81.1% | 79.8% | 79.6% | 77.0% | 76.1% |
| Blue Ridge CC | 82.7% | 80.8% | 81.8% | 75.3% | 75.9% |
| Carteret CC | 79.9% | 78.8% | 86.9% | 79.8% | 82.9% |
| Isothermal CC | 86.9% | 86.2% | 71.6% | 76.2% | 72.7% |
| Piedmont CC | 66.2% | 60.3% | 70.5% | 69.2% | 82.1% |
| Richmond CC | 72.3% | 73.8% | 83.9% | 87.5% | 79.0% |
| Robeson CC | 82.1% | 74.5% | 71.2% | 74.7% | 64.1% |
| Rockingham CC | 74.4% | 82.6% | 79.2% | 70.1% | 68.8% |
| Southwestern CC | 88.7% | 89.4% | 89.4% | 85.0% | 76.6% |
| Western Piedmont CC | 86.4% | 87.5% | 86.1% | 81.5% | 87.6% |
| Wilkes CC | 85.6% | 86.3% | 74.7% | 66.3% | 72.7% |
| Wilson CC | 86.7% | 77.7% | 80.3% | 81.8% | 74.3% |

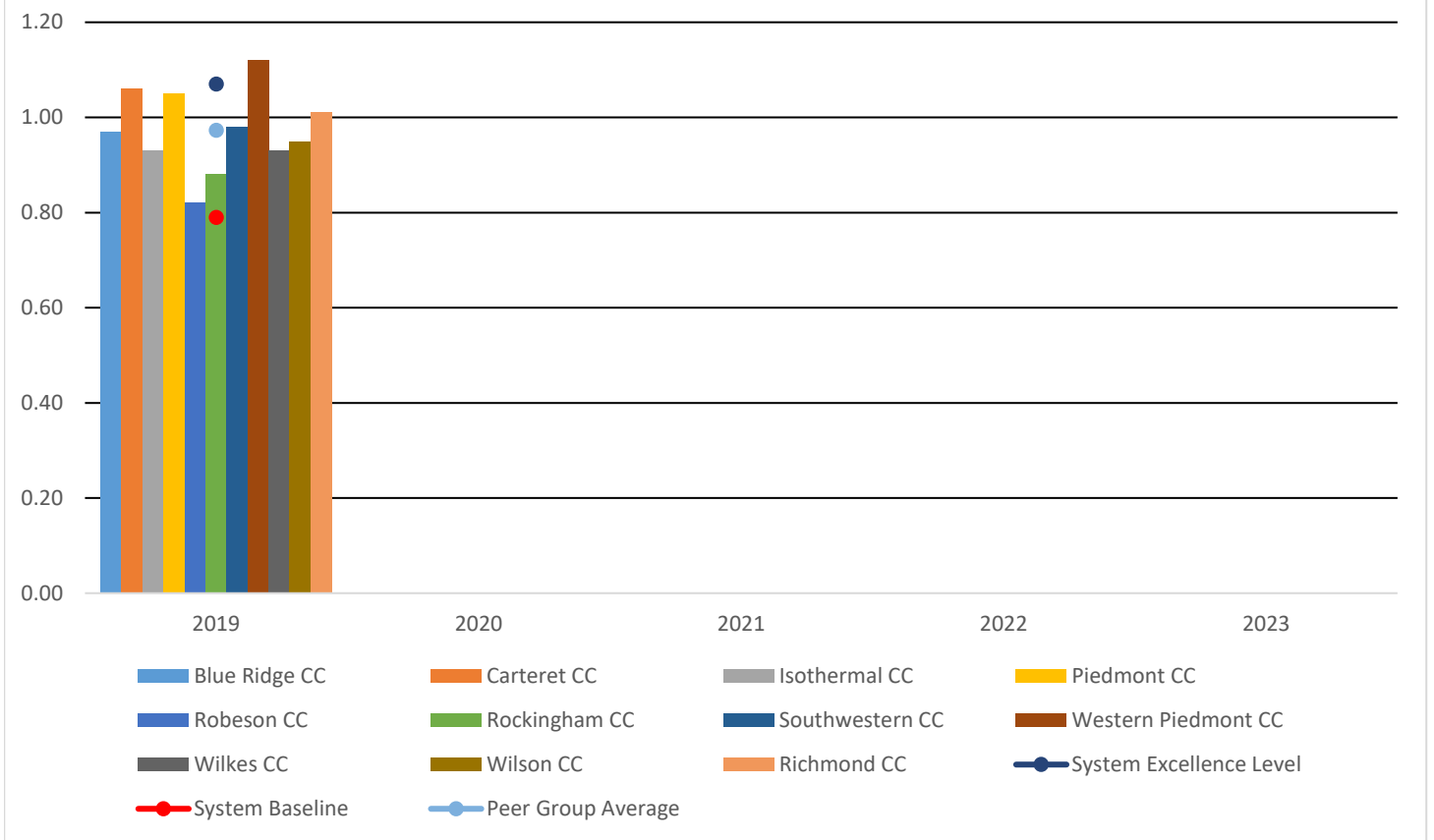
*For the purposes of this report, RCC has converted the index score to a percentage for consistency in comparison over years and across all measures.

Licensure Passing Rate Index - RCC Performance Measures 2019-2023



| Licensure Passing Rate Index - RCC | | | | | |
|---|-------------|-------------|-------------|-------------|-------------|
| | 2019 | 2020 | 2021 | 2022 | 2023 |
| Rockingham CC | 0.88 | | | | |
| System Excellence Level | 1.07 | | | | |
| System Baseline | 0.79 | | | | |
| Average College Percentage | 0.98 | | | | |

Licensure Passing Rate Index - Peer Group Performance Measures 2019-2023



| Licensure Passing Rate Index - Peer Group | | | | | |
|---|-------------|------|------|------|------|
| | 2019 | 2020 | 2021 | 2022 | 2023 |
| System Excellence Level | 1.07 | | | | |
| System Baseline | 0.79 | | | | |
| Peer Group Average | 0.97 | | | | |
| Blue Ridge CC | 0.97 | | | | |
| Carteret CC | 1.06 | | | | |
| Isothermal CC | 0.93 | | | | |
| Piedmont CC | 1.05 | | | | |
| Richmond CC | 1.01 | | | | |
| Robeson CC | 0.82 | | | | |
| Rockingham CC | 0.88 | | | | |
| Southwestern CC | 0.98 | | | | |
| Western Piedmont CC | 1.12 | | | | |
| Wilkes CC | 0.93 | | | | |
| Wilson CC | 0.95 | | | | |

7. College Transfer Performance

Purpose

To ensure the academic success of community college students at a four-year university or college.

Description

Among community college Associate Degree completers and those who have completed 30 or more articulated transfer credits who subsequently transfer to a four-year university or college during the fall semester, the percentage who graduate prior to or remain enrolled at any four-year college or university the subsequent fall semester.

Calculation

Denominator: Students who earned an Associate Degree during the fall, spring, and/or summer of the academic year and/or accumulated least 30 articulated transfer credits in the NCCCS prior to the end of the summer term of the cohort year, who enrolled the subsequent fall in any 4-year college or university that participates in the National Student Clearinghouse Student Tracker program.

Numerator: Of those in the denominator, the number who graduate with a bachelor's degree or higher prior to the next subsequent fall semester or remained enrolled in any 4-year college or university during the subsequent fall semester.

Data Sources

Comprehensive Curriculum Student Report (Formerly known as CRPFA)

Graduation Extract data file

National Student Clearinghouse

Additional Details

Students were followed for 7 consecutive terms (three terms in the NCCCS system (fall, spring, and summer), fall enrollment in a 4 year and degree progress in fall, spring, and summer of that year, and fall enrollment in the subsequent year).

Baseline and excellence levels were calculated based on three years of institutional outcomes (2014-15, 2015-16, and 2016-17 transfers).

Year-to-Year Changes

The measure has been changed to monitor students who graduate or remain enrolled the subsequent fall semester where the prior measure required two consecutive semesters of enrollment and a 2.25 GPA.

Excellence level: 89.4%

Baseline level: 74.4%

Peer Group Average: 83.7%

Average College Percentage: 85.2%

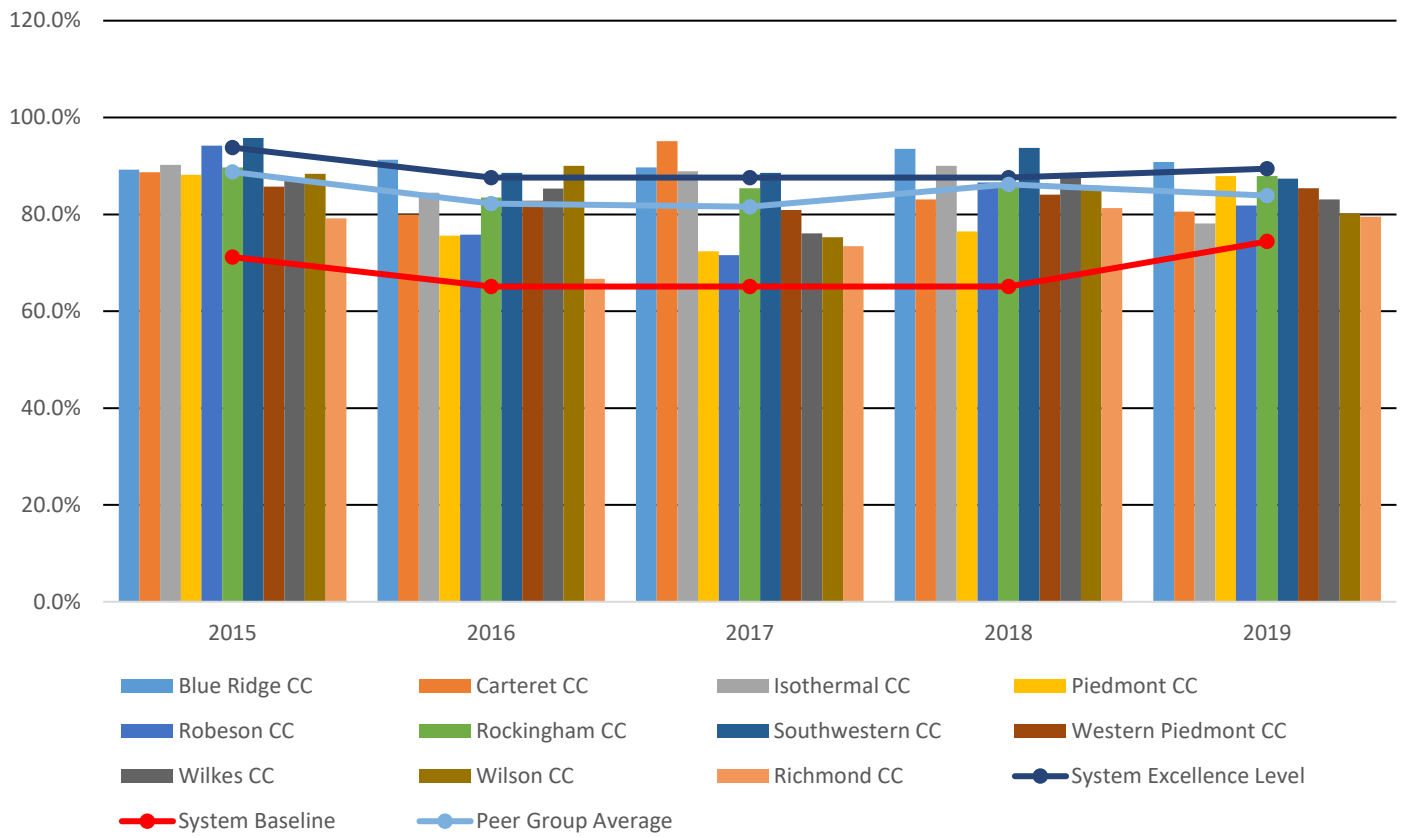
RCC: 87.9%

College Transfer Performance - RCC Performance Measures 2015-2019



| College Transfer Performance | | | | | |
|-------------------------------------|--------------|--------------|--------------|--------------|--------------|
| | 2015 | 2016 | 2017 | 2018 | 2019 |
| Rockingham CC | 89.7% | 83.5% | 85.4% | 86.2% | 87.9% |
| System Excellence Level | 93.8% | 87.6% | 87.6% | 87.6% | 89.4% |
| System Baseline | 71.2% | 65.1% | 65.1% | 65.1% | 74.4% |
| Average College Percentage | 87.7% | 82.7% | 82.5% | 82.5% | 85.2% |

College Transfer Performance - Peer Group Performance Measures 2015-2019



| College Transfer Performance - Peer Group | | | | | |
|--|--------------|--------------|--------------|--------------|--------------|
| | 2015 | 2016 | 2017 | 2018 | 2019 |
| System Excellence Level | 93.8% | 87.6% | 87.6% | 87.6% | 89.4% |
| System Baseline | 71.2% | 65.1% | 65.1% | 65.1% | 74.4% |
| Peer Group Average | 88.8% | 82.2% | 81.6% | 86.2% | 83.9% |
| Blue Ridge CC | 89.2% | 91.3% | 89.7% | 93.5% | 90.8% |
| Carteret CC | 88.7% | 80.0% | 95.1% | 83.1% | 80.6% |
| Isothermal CC | 90.2% | 84.5% | 88.9% | 90.0% | 78.1% |
| Piedmont CC | 88.2% | 75.6% | 72.4% | 76.5% | 87.9% |
| Richmond CC | 79.2% | 66.7% | 73.4% | 81.3% | 79.5% |
| Robeson CC | 94.2% | 75.8% | 71.6% | 86.6% | 81.8% |
| Rockingham CC | 89.7% | 83.5% | 85.4% | 86.2% | 87.9% |
| Southwestern CC | 95.8% | 88.6% | 88.6% | 93.7% | 87.4% |
| Western Piedmont CC | 85.7% | 82.8% | 80.9% | 84.1% | 85.4% |
| Wilkes CC | 87.0% | 85.3% | 76.1% | 87.5% | 83.1% |
| Wilson CC | 88.4% | 90.0% | 75.3% | 85.9% | 80.2% |

Appendix: First-Time Fall Cohort Definition

The first-time fall cohort includes fall credential seeking and dual enrollment (Career and College Promise) students enrolled in curriculum courses at a college for the first-time in the fall or preceding summer.

Fall first-time students are identified as follows:

The student has a primary CURRICULUM CODE that begins with an A, C, D, or P during their first fall term.

The student is enrolled in at least one curriculum course during their first fall term excluding courses where the COLLEGE LETTER GRADE equals NA, or NS.

The fall semester, or preceding summer, is the student's first curriculum enrollment term in any post-secondary institution. First curriculum enrollment term is determined as follows:

All enrolled students who meet the course enrollment and curriculum requirements stated above are sent to the National Student Clearinghouse for a Prior Attendance (PA) search for enrollment and graduation records (excluding degree titles related to Pathways, High School, Adult High School, High School Equivalency/GED) prior to August 15th of the fall term. These records are evaluated for enrollment prior to and during the preceding summer. Students with no enrollment or graduation record prior to the fall semester and those who only have an enrollment record in the preceding summer are flagged as potential first-time students.

All potential first-time students are then matched to the NCCCS Data Warehouse to search for course enrollment prior to the fall term at their fall term institution. Students with no course enrollment prior to the fall semester and those who enrolled for the first time during the preceding summer at their fall term institution are included in the fall cohort.

NCCCS Data Warehouse matching is based on an exact match of one or more of the following standardized and concatenated variables as reported during the student's first fall term:

NAME_DOB: LAST NAME, FIRST NAME, DATE OF BIRTH

NAME_SID: LAST NAME, FIRST NAME, STUDENT ID

SID_DOB: STUDENT_ID, DATE OF BIRTH

The following measures are based on the First-Time Fall Cohort:

Student Success Rate in College-Level English Courses

Student Success Rate in College-Level Math Courses

First Year Progression

Curriculum Completion

Data Sources

Comprehensive Curriculum Student Report (Formerly known as CRPFA)

National Student Clearinghouse