



# Rockingham

COMMUNITY COLLEGE



# RETRAIN FOR A NEW CAREER

## CONTINUING EDUCATION SCHEDULE

### FALL 2019-SPRING 2020

START LOCAL. GO FAR.

336-342-4261

ROCKINGHAMCC.EDU



# FIRE/RESCUE TRAINING

## North Carolina Fire & Rescue Commission Certification Classes

### Firefighter Certification

#### Technical Rescuer

- Vehicle Rescue
- Trench Rescue
- Water Rescue
- Wilderness Rescue
- Machinery & Agricultural Rescue
- Confined Space Rescue
- Structural Collapse Rescue

#### Haz-Mat Level I Responder

### Driver Operator

- Pump Operations
- Aerial Operations
- Emergency Vehicle Driver
- Mobile Water Supply

### Fire & Life Safety Educator Levels I, II & III

### Instructor Methodology

### TIMS

### RIC

*\*Students should be associated with a fire or rescue department*



#### Info:

**Randy D. Evans**  
**336-342-4261 ext. 2390**  
**evansr@rockinghamcc.edu**

#### Class Schedules:

**[www.rockinghamcc.edu](http://www.rockinghamcc.edu)**

**Click Continuing Education and then Fire & Rescue**

# HOW TO REGISTER FOR CONTINUING EDUCATION CLASSES

- IN PERSON** See the receptionist in the upper level of the Whitcomb Student Center
- BY PHONE** Call 336-342-4261, ext. 2011
- ONLINE** [www.rockinghamcc.edu/non-credit](http://www.rockinghamcc.edu/non-credit)
- BY MAIL** Complete the application on page 23 and mail it to the address at the bottom

## Table of Contents

Advanced Cardiac Life Support.....18	Emergency Medical Technician.....17	Pediatric Advanced Life Support....19
AHA Instructor.....18-19	Furniture Construction.....15	Pharmacy Technician.....19
Animal Care-Certificate Program...12	Fire/Rescue.....2	Photography.....14
Cake Decorating.....14	First Aid.....17	Pottery.....14
<b>Campus Map.....22</b>	Foraging – Eat the Weeds.....8	<b>Registration.....23</b>
Cardiovascular Technician.....17	Health Certifications.....17	Residential Wiring.....8
Career & College Readiness.....4	Income Maintenance Caseworker...11	Small Business Center.....21
Chainsaw Safety.....6	Job Seeker’s Lab.....11	Small Engine Repair.....6
Community Paths & Placemaking...6	Jump Into the Workforce.....11	Stained Glass.....15
CompTIA A+.....12	Kayaking and Canoeing.....8	TRAILS.....5-8
CPR.....18-19	Music.....14	Vehicle Safety Inspection.....9
Dog Grooming.....12	Notary Public.....12	Welding for Beginners.....8-9
Drawing.....13	Nurse Aide I.....19	Wilderness First Aid.....7
DSS Caseworker.....9	OBD/IM Emissions Training.....9	Wild Mushroom Certification.....8
Ed2Go Online Classes.....20	Painting.....13-14	Woodturning.....16
Effective Teacher Training.....11	Paramedic.....17	Woodworking.....15-16

# Cardiovascular Technician

This program prepares students to become certified EKG Technicians. Students will learn the anatomy and physiology of the heart, including the electrical conduction system and how it affects heart function.

This course covers the anatomy and physiology of the heart, principles of EKG, dysrhythmia recognition of sinus, junctional/atrial rhythms, heart blocks and bundle branches, and ventricular ectopy rhythms.

Students will build skills in operating EKG equipment, including running and mounting strips, reading and interpreting 22 types of cardiac lead tracings produced from 12-lead and 5-lead monitors, and understanding the basics of capnography as it relates to heart function. This program will prepare students for the Certified EKG Technician (CET) Exam through the National Healthcareer Association (NHA).



**Course Dates: Aug. 27-Nov. 21**  
**Tuesdays & Thursdays, 5:30-9:30 p.m.**  
**Tuition: \$192 + textbook, \$117 CET Exam**

# WELCOME TO COLLEGE AND CAREER READINESS!

Rockingham Community College offers FREE classes to help you meet your academic and work-readiness goals through:

**High School Equivalency (HiSET®/GED®)**

**Adult High School**

**English Language Acquisition (formerly ESL)**

## **ADULT HIGH SCHOOL**

This tuition-free program helps qualifying adults complete a high school diploma through individualized instruction. Students must pass required high school level courses and students are awarded credit for previously completed high school courses. Interested individuals should call 336-342-4261 ext. 2146 to schedule a transcript evaluation appointment.

## **ADULT BASIC EDUCATION AND HIGH SCHOOL EQUIVALENCY**

Many students in our program are preparing to take an exam such as HiSET® or GED®, to earn a high school equivalency credential. Other students may have already completed a high school credential, but are improving their reading and math skills to be more competitive in the workforce or more successful in college courses.

**Classes run year-round at RCC,  
Reidsville, Mayodan, Eden, and Online.**

New students start by attending a two-day orientation session at RCC

Call 336-342-4261 ext. 2146 to schedule your orientation and get started!

## **ENGLISH LANGUAGE ACQUISITION (FORMERLY ESL)**

These free classes are designed for adults whose native language is not English. Students improve their English speaking, reading, listening and writing skills. Classes are offered throughout the year. Distance learning programs are also available. New students must attend an orientation session. To enroll, call 336-342-4261 ext. 2146 or email [ESL@rockinghamcc.edu](mailto:ESL@rockinghamcc.edu).

Estas clases gratuitas están diseñadas para adultos cuyo idioma nativo no es el inglés. Los estudiantes mejoran sus habilidades para hablar, leer, escuchar y escribir en inglés. Las clases se ofrecen durante todo el año. Programas de educación a distancia también están disponibles. Los nuevos estudiantes deben asistir a una sesión de orientación. Para inscribirse, llame al 336-342-4261 ext. 2146 o correo electrónico [ESL@rockinghamcc.edu](mailto:ESL@rockinghamcc.edu).

# Duke Energy TRAILS at RCC



An Outdoor Skills Training Program

## NEW COURSES

1. Wilderness First Aid
2. Outdoor Recreation Planning
3. Small Engine Repair
4. Chainsaw Safety
5. Sustainable Trail Management, Assessment, Permitting, and Contracting
6. Community Paths and Placemaking
7. Wild Mushroom Food Safety

*See pages 8-9  
for all TRAILS courses*



Duke Energy TRAILS at Rockingham Community College has developed a sustainable trail skills training sequence of classes for varying skill levels, interests, and needs.

Lecture, discussion, and experiential activities/fieldwork are combined to help students completely comprehend the course content.

Course offerings are added based on demand. If your agency or organization has specific trail skills training needs, we can create and schedule a program that meets your needs.

These classes are beneficial for anyone that has an interest in or is responsible for managing natural surface multiple-use trails.

These trail skills will enhance the overall skill sets of staff from federal, state, and local government land management agencies; non-profit land conservancies; planning, parks and recreation, and maintenance departments; trail crew leaders, members, and volunteers.

**Basic Trail Training** - This class is appropriate for any individuals who will be involved in the planning and design, construction, maintenance, and management of natural surface multiple-use trails. While not always required, the basic trail training class provides the ideal background for intermediate and advanced trail training. *Sustainable Trail Design and Layout, Construction, and Maintenance (25 hours)*

**Intermediate Trail Training** - This class is appropriate for individuals who may be involved in the conceptual planning, assessment, permitting, and contracting of natural surface multiple-use trails. Individuals in management roles who work with trail staff and professionals will benefit from the information offered in this class. *Sustainable Trail Assessment, Permitting, and Contracting (16 hours)*

**Duke Energy TRAILS at RCC**  
Sustainable Trail Skills Training Sequence  
For more information, contact  
Trevor Flanery, Director  
336-342-4261, ext. 2704  
flaneryt4977@rockinghamcc.edu

# TRAILS

## Basic Rockwork for Trails

Rock and stonework skills for trail building are introduced in this training session. Benchmark Trails Inc., from Greenville, SC, will be instructing the class. Students will learn how to move rock efficiently and use various methods to build stone steps. The class will construct stone steps on the RCC campus trail system. Small class size and focused fieldwork will allow participants to receive guided instruction in the field. Individuals should have prior experience with basic trail skills. Participants must dress appropriately for trail work – hard hat, safety glasses, gloves, long pants, and boots preferred. Certificates will be awarded to all participants.

Instructor: Benchmark Trails				Cost: \$350		
Course Code	Section	Days	Date	Time	Loc	
SEF-7179-01	48442	TWTh	4/14-4/16	8AM-5PM	BLC 108	

## Chainsaw Safety

Chainsaw safety classroom and field training is covered during this two-day USFS certified training session by Helton Forestry Enterprises. Due to significant storm damage to area trails, the need for certified and recertified chainsaw operators is a critical issue. Participants will learn basics of chainsaw job hazard analysis, use and maintenance, directional felling, as well as saw tasks and techniques. Students will perform chainsaw operations and be evaluated on their skill level under the guidance of one of the more experienced USFS qualified instructor/certifiers in NC. Certificates will be awarded to all participants. Chainsaws will be provided. Gloves, Hard Hat, Safety Goggles and Chaps should be furnished by student. Leather boots (required).

Instructor: Helton Forestry Enterprises				Cost: \$200		
Course Code	Section	Days	Date	Time	Loc	
SEF-7192-01	48483	FSa	1/10-1/11	8AM-5PM	BLC 108	

## Community Paths and Placemaking

This class includes both lecture and design studio instruction elements. Community development and connection are essential to neighborhood success. Walking, landscaping, and environmental quality are fundamental to town and suburban contexts as much as they are natural areas. Would you like to learn how to improve your neighborhood? This course covers concepts needed to design and implement strategies to revitalize and connect neighborhoods to healthy environmental and economic systems, as well as to one another. Topics include asset-based development, walkability, outdoor recreation, environmental systems, site assessment, and activity-based modeling of local physical settings, populations, and behaviors related to foot traffic such as shopping, recreational walking, or commuting to jobs and schools. Upon completion, students should be able to develop a place-based community development plan.

Instructor: Flanery				Cost: \$70		
Course Code	Section	Days	Date	Time	Loc	
ENV-7015-01	48466	T	3/24-4/28	6PM-8PM	BLC 101	



## Mechanized Trail Construction

During this advanced three-day training session, participants will gain an introduction into the world of mechanized trail building. Students will train on a variety of mini-excavators and a Sutter trail dozer. Please contact Trevor Flanery, director of Duke Energy TRAILS at RCC for more details. Call 336-342-4261, ext. 2704.

Instructor: Tri State Company, Inc.				Cost: \$500		
Course Code	Section	Days	Date	Time	Loc	
SEF-7173-01	48443	TWTh	4/7-4/9	8AM-5PM	BLC 108	

## Outdoor Recreation Planning

This class includes both lecture and design studio instruction elements. Anyone interested in pursuing volunteer, government, and commercial efforts to enhance local economic opportunities based on environmental assets will benefit from a broader, comprehensive look at area conditions and potential opportunities. This course introduces students to sustainable practices in site design and assessment for outdoor recreation land development. Topics include outdoor recreational activity assessment, environmental assets, recreational site assessment, local hospitality and retail landscape analysis, ecotourism, environmental and financial sustainability, and development planning. Upon completion, students should be able to demonstrate techniques and procedures used for planning development of recreational environments and activities.

Instructor: Flanery				Cost: \$70		
Course Code	Section	Days	Date	Time	Loc	
ENV-7015-01	48452	T	9/17-10/22	6PM-8PM	TBA	

## Small Engine Repair

Get hands-on knowledge of engine repair techniques to manufacturers' specifications. Instruction will be in two-stroke, four-stroke, and compact diesel engines. Upon successful completion, the student will be prepared to take certification exams through the EETC (Engine Equipment Training Council), a national organization. A student passing all 3 certification exams is qualified to be recognized as an "EETC-Certified Engine Technician." Upon earning an EETC certification, the student will receive from EETC a certificate, certification patch, and chevron for their work uniform. Test fees are \$49 per test. If the student does not pass a certification test they make

retake the exam after 2 weeks. Retest fees are \$10 online and \$20 for a paper test. For more information about the EETC Technician Certification Program, go to <https://www.eetc.org/page/TechCert>. The classroom instruction portion will be one morning per week online, and the lab portion will be one morning per week at Eden Lawnmower, 100 E. Aiken Road, Eden. Students will need protective eye gear, work gloves, and should wear closed-toed shoes and clothing they do not mind getting dirty or stained. No class Dec. 23, 25, 30, Jan. 1, 20.

Instructor: White Cost: \$180

Course Code	Section	Days	Date	Time	Loc
AUT-7103-01	48256	M	10/21-2/26	8AM-11AM	ELDM
		MTWTHFSSU			Online
AUT-7103-02	48262	M	10/21-2/26	6PM 9PM	ELDM
		MTWTHFSSU			Online

### Sustainable Trail Design and Layout, Construction, and Maintenance

During this four-day basic trail training session, participants will learn how to design, lay out, construct, and maintain sustainable trails. Classroom teaching and experiential learning will be combined to help students understand the fundamentals of sustainable trails. Participants will begin by discussing the “trail experience” and the characteristics of sustainable trails. They will learn about the five essential elements of sustainable trails and how to incorporate them into trail layout and construction. The session will cover design, construction, and maintenance techniques that minimize the volume and velocity of water on the trail tread. It will guide participants from desktop trail planning to design and layout, corridor flagging, and pin flagging of a trail alignment in the field. Students will gain field experience constructing new trail reroutes and maintaining existing trails on the RCC campus. Students will become familiar with the use of a clinometer to measure trail grade/steepness and sideslopes. Common trailwork hand tools will be utilized for trail construction and maintenance. Trailbuilding tools will be provided for student use. Students should bring their own lunch, snacks, and plenty of drinking water. Students must dress appropriately for trailwork - gloves, safety glasses, long pants, and closed-toe shoes (boots preferred).

Instructor: Destination by Design Cost: \$125

Course Code	Section	Days	Date	Time	Loc
ENV-7003-01	47735	M	10/14-10/17	12:30PM-5PM	BLC 108
		TW		8AM-5PM	
		Th		8AM-12:30PM	
ENV-7003-02	47736	M	12/2-12/5	12:30PM-5PM	BLC 108
		TW		8AM-5PM	
		Th		8AM-12:30PM	
<b>Spring</b>					
ENV-7003-01	48287	M	2/17-2/20	12:30PM-5PM	BLC 108
		TW		8AM-5PM	
		Th		8AM-12:30PM	
ENV-7003-02	48288	M	4/27-4/30	12:30PM-5PM	BLC 108
		TW		8AM-5PM	
		Th		8AM-12:30PM	

### **RCC offers College Transfer Programs:**

- Associate in Arts
- Associate in Science
- Associate in Fine Arts in Visual Arts
- Associate in Early Childhood Education
- Associate in General Education Nursing

### Sustainable Trail Management, Assessment, Permitting, and Contracting

During this two-day intermediate trail training session, participants will learn about the comprehensive management of natural surface trails. Students will discuss trail assessment, trail facilities, signage, maintenances, wet weather trail closure, and other current issues. Classroom teaching and experiential learning will be combined to help students understand critical trail assessment. Participants will begin by discussing how trail condition, maintenance, and safety can affect the “trail experience”, and they will conduct a desktop trail system review. Students will also learn how the interpretation of assessment results may vary depending on user group and trail difficulty. The session will cover potential permitting requirements and trail contracting for natural surface sustainable trail projects based on assessment results. Participants will gain field experience assessing existing trails and proposed reroutes on the Rockingham Community College trail system. Fieldwork will also include a site visit to a local trail system to evaluate sustainable trail management topics. Note: Students should bring their own lunch, snacks, and plenty of drinking water. Participants must dress appropriately for hiking - long pants and closed-toe shoes (boots preferred), and be prepared to hike 3-6 miles over the course of two days.

Instructor: Destination by Design Cost: \$70

Course Code	Section	Days	Date	Time	Loc
ENV-7014-01	48289	WTh	3/25-3/26	12:30PM-5PM	BLC 108

### Wilderness First Aid

This fast paced, hands-on 16-hour, two-day training is designed to meet the needs of trip leaders, camp staff, outdoor enthusiasts and individuals working in remote locations to prepare for the unexpected. It will introduce participants to caring for people who become ill or injured far from definitive medical care. Instruction will be provided by Landmark Learning, Inc., an affiliate of NOLS (National Outdoor Leadership School). Classroom lectures and demonstrations are combined with realistic scenarios where mock patients will challenge students to integrate their learning. At the end of the course, class participants will have the knowledge, skills and ability to make sound decisions in emergency situations. Boy Scout and Girl Scout troop leaders are encouraged to enroll. This course is also recommended for avid hikers, canoe or kayak trip leaders, college/university outdoor education programs, wilderness therapeutic programs, and adventure race safety personnel. This course meets the American Camp Association 2012 Standards and the Boy Scouts of America Wilderness First Aid training requirement, and is also approved by the U.S. Coast Guard to satisfy the first aid and CPR training requirements for a merchant mariner license. Class will be held regardless of weather conditions. Come prepared for wet, muddy, cold or hot environments. Bring your own water bottle and/or snacks. *Registration will close at 5 p.m. on Tuesday Aug. 20, to confirm that the class minimum has been met.*

Instructor: Landmark Learning Cost: \$125

Course Code	Section	Days	Date	Time	Loc
SEF-7182-01	46208	SSU	9/21-9/22	8AM-5PM	BLC 108

## Introduction to Kayaking and Canoeing

Learn the basics of this enjoyable outdoor activity. Topics include general knowledge about the boats, local and regional destinations for enjoyment, safety, personal gear, basic water and weather conditions, and how to connect with others who share an interest in this activity. This six-class series includes two on-the-water experiences, with the final class being a guided trip down the Smith River on a Saturday. Instructors provided by Three Rivers Outfitters and Troublesome Creek Outfitters. Canoes, kayaks, paddles, and personal flotation devices (PFDs) will be provided to the students.

Instructor: Yates			Cost: \$75		
Course Code	Section	Days	Date	Time	Loc
CSP-7749-01	48445	TTH	10/8-10/17	6PM-8PM	BLC 108
		T	10/22	5PM-7PM	THRI
		S	10/26	10AM-12PM	THRI

### Spring

CSP-7749-01	48444	TTH	4/28-5/16	6PM-8PM	BLC 108
		T	5/12	5PM-7PM	THRI
		S	5/16	10AM-12PM	THRI

## Foraging – Eat the Weeds

Each foraging monthly session will focus on at least five different wild plant species that are currently ready for harvest as the season progresses and changes. A combination of class lecture and field identification/collection will provide an in-depth look at the selected species, potential look-a-likes, and preparation for consumption. Students will discuss laws, responsible harvesting, and personal safety guidelines for wild-crafting food and medicine for personal use. Participants will also be provided recipes for each wild plant species to take home and try first hand. Students should dress appropriately for fieldwork and bring bug spray.

Instructor: Warren			Cost: \$30		
Course Code	Section	Days	Date	Time	Loc
SEF-7170-01	48082	S	8/17	9AM-1PM	BLC 108

### Spring

SEF-7190-01	48447	S	3/21	9AM-1PM	BLC 108
SEF-7190-02	48448	S	4/18	9AM-1PM	BLC 108

### Summer

SEF-7190-01	48449	S	5/16	9AM-1PM	BLC 108
SEF-7190-02	48450	S	6/20	9AM-1PM	BLC 108

## Wild Mushroom Certification

Students who successfully complete this two-day class will be eligible for a 5-year permit enabling them to forage and sell wild mushrooms at farmer's markets, to restaurants, and in other venues. The mushroom foraging permit meets the criteria required by the health department in North Carolina, South Carolina, and Georgia. This course is new to the area and will be taught by local favorite Stesha Warren, authorized DHEC, GADPH & NCDPH Mushroom Hunting Instructor. Students will receive a study guide and slides 2 weeks ahead of the class. For more information on Wild Mushroom Certification in North Carolina, visit <https://ehs.ncpublichealth.com/docs/position/WildForagedMushroomPositionStatement-FINAL-May12-2017.pdf>.

Instructor: Mushroom Mountain			Cost: \$250		
Course Code	Section	Days	Date	Time	Loc
SEF-7190-01	48446	SSu	4/25-4/26	9AM-5PM	BLC 108

# Explore & Expand Careers

## Residential Wiring

This electrical class is for beginners who want to learn to perform routine electrical maintenance at home or obtain employment as an Electrician's helper. The course is designed to cover the principles of electrical wiring as it applies to residential applications. Topics will include series circuits, parallel circuits and series parallel circuits, use of electrical tools and equipment, wiring materials and many other special subjects. Preventive maintenance and troubleshooting as well as portions of the National Electrical Code will be covered. Textbook required: "Residential Wiring" third edition by American Technical Publishers. Students will need the following tools for class: 9" lineman's pliers, wire stripper 10-20awg, screwdriver flat head, #2 Phillips head, and tape measure any size (up to 25'). No class on Tuesday Sept. 3 or on Thursdays, Sept. 12, 26, Oct. 17 or Nov. 28. There will be 3 Saturday classes and attendance is expected. Saturday class dates are Sept. 14, 28, and Dec. 7 from 8 a.m.-5 p.m. (1-hour lunch).

Instructor: Yates			Cost: \$180		
Course Code	Section	Days	Date	Time	Loc
ELC-7002-01	48404	MW	8/26-12/7	6PM-9PM	IT1-104

## Welding for Beginners

Welding for Beginners provides instruction on the principles and practices of welding. No previous experience required. Emphasis is on SMAW (stick) and GMAW (MIG) welding. Upon completion, students will have the knowledge base to seek employment as a welder's helper. \$20 supply fee is included in the cost of this class. Students will need a welding helmet, gloves, welding sleeves or welding jacket, welding pliers, safety glasses, and closed-toe shoes (preferably leather). These items will cost approx. \$250-\$400. Financial assistance may be available for this class. Call for details: 336-342-4261, ext. 2011.

Instructor: Tilley			Cost: \$200		
Course Code	Section	Days	Date	Time	Loc
WLD-7003-01	48477	S	8/17-12/14	8AM-4:30PM	IT1-103
<b>Spring</b>					
WLD-7003-01	48480	S	1/11-5/02	8AM-4:30PM	IT1-103

## Welding for Beginners – Level 2

Welding for Beginners – Level 2 is the ideal opportunity for students who have completed "Welding for Beginners" to continue their instruction and lab experience. "Level 2" provides additional instruction on the principles and practices of welding, with emphasis on SMAW (stick) and GMAW (MIG) welding. Students must have already completed "Welding for Beginners," so they should already have the equipment they need (welding helmet, welding sleeves, pliers, etc.). Upon completion, students will have the knowledge base to seek employment as a welder's helper. \$90 supply fee is included in the cost of this class.





Instructor: Tilley Cost: \$270

Course Code	Section	Days	Date	Time	Loc
WLD-7006-01	48478	S	8/17-12/14	8AM-4:30PM	IT1-103
<b>Spring</b>					
WLD-7006-01	48481	S	1/11-5/2	8AM-4:30PM	IT1-103

### Welding for Beginners – Level 3

Welding for Beginners – Level 3 is the ideal opportunity for students who have completed “Welding for Beginners – Part 2” to continue their instruction and lab experience. “Level 3” provides additional instruction on the principles and practices of welding, with an emphasis on GTAW welding. Students must have already completed “Welding for Beginners” and “Part 2,” or must have previous welding experience, so they should already have the equipment they need (welding helmet, welding sleeves, pliers, etc.). Upon completion, students will have the knowledge base to seek employment as an entry-level welder. \$90 supply fee is included in the cost of this class.

Instructor: Tilley Cost: \$270

Course Code	Section	Days	Date	Time	Loc
WLD-7007-01	48479	S	8/17-12/14	8AM-4:30PM	IT1-103
<b>Spring</b>					
WLD-7007-01	48482	S	1/11-5/2	8AM-4:30PM	IT1-103

### OBD/IM Emissions Training

This emissions course prepares auto technicians and service personnel to be safety and emission inspectors for motor vehicles. It includes regulations and test inspection procedures. Students are taught to inspect a vehicle and gain the skills necessary to pass the qualification exams for certification as a safety and emissions inspector at a licensed inspection station. The cost of this class includes a \$5 fee for

the course manual. Classes are held at Jumper's Auto Service, 124 N. Fieldcrest Road, Eden.

Instructor: Jumper Cost: \$75

Course Code	Section	Days	Date	Time	Loc
AUT-7300-02	47859	MT	8/12-8/13	5PM-9PM	JUAS
AUT-7300-01	47861	MT	9/16-9/17	5PM-9PM	JUAS
AUT-7300-02	47862	MT	10/14-10/15	5PM-9PM	JUAS
AUT-7300-03	47868	MT	11/11-11/12	5PM-9PM	JUAS
AUT-7300-04	47869	MT	12/9-12/10	5PM-9PM	JUAS
<b>Spring</b>					
AUT-7300-01	48422	MT	1/13-1/14	5PM-9PM	JUAS
AUT-7300-02	48423	MT	2/10-2/11	5PM-9PM	JUAS
AUT-7300-03	48424	MT	3/9-3/10	5PM-9PM	JUAS
AUT-7300-04	48425	MT	4/13-4/14	5PM-9PM	JUAS
AUT-7300-05	48426	MT	5/11-5/12	5PM-9PM	JUAS

### Vehicle Safety Inspection

The Vehicle Safety Inspection course teaches participants the proper procedures for conducting vehicle safety inspections. Information on the operation of a safety inspection station is included. The cost of this class includes an \$8.00 fee for the course manual. Classes are held at Jumper's Auto Service at 124 N. Fieldcrest Road, Eden.

Instructor: Jumper Cost: \$78

Course Code	Section	Days	Date	Time	Loc
AUT-7302-02	47871	MT	8/5-8/6	5PM-9PM	JUAS
AUT-7302-01	47872	MT	9/9-9/10	5PM-9PM	JUAS
AUT-7302-02	47873	MT	10/7-10/8	5PM-9PM	JUAS
AUT-7302-03	47874	MT	11/4-11/5	5PM-9PM	JUAS
AUT-7302-04	47875	MT	12/2-12/3	5PM-9PM	JUAS
<b>Spring</b>					
AUT-7302-01	48417	MT	1/6-1/7	5PM-9PM	JUAS
AUT-7302-02	48418	MT	2/3-2/4	5PM-9PM	JUAS
AUT-7302-03	48419	MT	3/2-3/3	5PM-9PM	JUAS
AUT-7302-04	48420	MT	4/6-4/7	5PM-9PM	JUAS
AUT-7302-05	48421	MT	5/4-5/5	5PM-9PM	JUAS

### Human Services Exploration: DSS Caseworker Phase 1

This NC FAST class is the first in a series of two classes offered through this statewide program. BOTH classes must be successfully completed in order to gain certification. The second class is “HSE-3220: Income Maintenance Caseworker” and it will begin on Oct. 1, 2019 and again on March 17, 2020. This certification series is for students who are interested in working for the N.C. Department of Social Services as an Income Maintenance Caseworker. Students taking this class must be comfortable using computers. As authorized by G.S. 115D-5(b)(13), students may be eligible for a registration fee waiver if he/she: (1) is unemployed, (2) has received notification of a pending layoff, (3) is working and is eligible for the Federal Earned Income Tax Credit (FEITC), or (4) is working and earning wages at or below two hundred percent (200%) of the federal poverty guidelines.

Instructor: Varies Cost: \$125

Course Code	Section	Days	Date	Time	Loc
<i>All students must attend orientation on Wednesday, 8/7</i>					
HRD-4000-01	47884	TTH	8/8-9/26	6PM-9PM	BLC 206
<i>All students must attend orientation on Monday, 8/19</i>					
HRD-4000-02	47885	TWTH	8/20-9/19	6PM-9PM	BLC 103
<b>Spring</b>					
<i>All students must attend orientation on Monday, 1/13</i>					
HRD-4000-01	48344	TTH	1/14-3/3	6PM-9PM	BLC 206
HRD-4000-02	48345	TWTH	1/14-2/13	6PM-9PM	BLC 103

# Get the right tools for your job search!



*Classes meet at various locations and times.*

## Jump into the Workforce

*Ongoing open lab allows students to drop in for help with:*

- Resume Writing
- Resume Revisions
- Cover Letters
- Job Seeking Skills
- Job Interview Skills
- Job Search Planning
- Online Applications
- Soft Skills
- Career Exploration
- Computer Classes
- Career Readiness Certification ... and MORE!

## Job Seekers Labs

*Short, two-hour workshops*

- *Get Noticed: Best resume and interview practices*
- *Job Search: Strategies that work*
- *Soft Skills: How to get and keep a job*

## Boot Camps

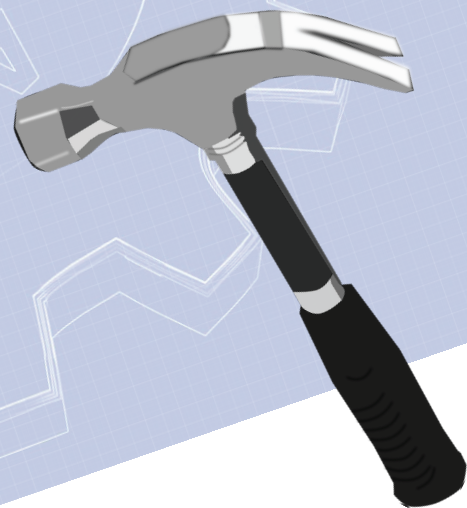
*One- or two-day workshops designed for and hosted by agencies, employers, organizations, and others covering topics including:*

- Soft Skills
- Workplace Behavior
- Hiring Process
- And more!

## Online Workshops

*Learn at your own pace how to get and keep a job*

- Job Search Success
- Job Readiness for the Workplace



Contact Sharon Galloway at 336-342-4261 x2121 for more information!

### Income Maintenance Caseworker (NC FAST)

This NC FAST class is the second in a series of two classes offered through this statewide program. BOTH classes must be successfully completed in order to gain certification. The prerequisite for this class is "HRD-4000: Human Services Exploration: DSS Caseworker," which begins on Aug. 7, 2019 and again on Jan. 13, 2020. This certification series is for students who are interested in working for the N.C. Department of Social Services as an Income Maintenance Caseworker. Students taking this class must be comfortable using computers. No class Oct. 17.

Instructor: Varies						Cost: \$125
Course Code	Section	Days	Date	Time	Loc	
HSE-3220-01	47882	TTH	10/1-11/26	6PM-9PM	BLC 103	
Spring						
HSE-3220-01	48398	TTH	3/17-5/7	6PM-9PM	BLC 103	

### Job Seeker's Lab

Learn the skills needed to successfully enter and remain in the workforce. Individuals will learn how to answer opened interview questions, use online job application websites and receive face-to-face interview practice. Workshops are also available during this lab time. Students may be eligible for a registration fee waiver if he/she: (1) is unemployed, (2) has received notification of a pending layoff, (3) is working and is eligible for the Federal Earned Income Tax Credit (FEITC), or (4) is working and earning wages at or below two hundred percent (200%) of the federal poverty guidelines.

Instructor: Carter						Cost: \$180
Course Code	Section	Days	Date	Time	Loc	
HRD-7302-01	48348	TH	1/9-5/14	10AM-2PM	NCWC	

### Jump Into the Workforce (Open Lab)

This is an open lab that acts as a one-stop shop for job seekers. Instructors are trained to help individuals with job applications, job searches, resumes, cover letters and much more. Students also have the option to earn a nationally recognized Career Readiness Certificate that will help them stand out in a crowd of job applicants. Students may be eligible for a registration fee waiver if he/she: (1) is unemployed, (2) has received notification of a pending layoff, (3) is working and is eligible for the Federal Earned Income Tax Credit (FEITC), or (4) is working and earning wages at or below two hundred percent (200%) of the federal poverty guidelines.

Instructor: Varies						Cost: \$180
Course Code	Section	Days	Date	Time	Loc	
HRD-3002-03	48349	MWF	1/3-5/15	10AM-2PM	NCWC	
		T		9AM-12PM		
HRD-3002-01	48346	TH	1/9-5/14	9AM-12PM	GOWI	
HRD-3002-02	48347	TTH	1/9-5/14	5PM-8PM	NCWC	



### Effective Teacher Training

The Effective Teacher Training class is designed to teach potential substitute teachers how to be successful in a classroom setting. This course is required by Rockingham County Schools in order to gain employment as a substitute teacher. Topics include classroom management, learning styles, personality types, communication skills, teaching skills, classroom activities, and responsibilities of guest teachers in schools and in the community. Register early for this very popular class – this class is limited to 12 students. No textbook required. Students will need only a basic notebook for note-taking and journaling; this item may be purchased for approximately \$1 from Dollar Tree, Dollar General, Walmart, etc. Questions about employment with the Rockingham County Public School system, including whether you may be exempt from this class as a condition of becoming employed with RCS, should be directed to the Human Resources Department at Rockingham County Schools at 336-627-2600. Students must have a high school diploma or GED and must be at least 18 years old to enroll in this class.

Instructor: Detter						Cost: \$125
Course Code	Section	Days	Date	Time	Loc	
EDU-3002-01	47845	TWTH	8/27-9/18	9AM-12PM	BLC 108	
EDU-3002-02	47846	TWTH	9/24-10/16	9AM-12PM	ADT 211	
EDU-3002-03	47847	TWTH	10/22-11/13	9AM-12PM	BLC 108	
EDU-3002-04	47848	TWTH	11/19-12/18	9AM-12PM	ADT 211	
Spring						
EDU-3002-01	48392	TWTH	1/07-1/29	9AM-12PM	ADT 211	
EDU-3002-02	48393	TWTH	2/4-2/26	9AM-12PM	ADT 211	
EDU-3002-03	48394	TWTH	3/3-3/25	9AM-12PM	BLC 101	
EDU-3002-04	48395	TWTH	3/31-4/29	9AM-12PM	BLC 101	
Summer						
EDU-3002-05	48397	TWTH	5/3-5/27	9AM-12PM	BLC 101	

**Interested in a Certificate, Diploma or Associate Degree?**

Check out the back cover or visit [www.rockinghamcc.edu](http://www.rockinghamcc.edu)



**Rockingham**  
COMMUNITY COLLEGE

## Notary Public

Notary students learn the requirements and qualifications of the notary public office. Requirements for attestation, fees, general powers and limitations, certifications, oaths, affirmations and affidavits are taught. NC notaries must have a high school diploma or GED; must be at least 18 years old; read, write, and speak English; have no felony convictions; and successfully complete this approved notary course. Additional costs include: commission fee to Secretary of State, \$50; swearing in at the courthouse, \$10; required textbook, \$28; notary seal, \$20-\$40 (approx. cost). Prepayment and Notary Book 11th Edition required.

Instructor: Tucker						Cost: \$70
Course Code	Section	Days	Date	Time	Loc	
MLS-3874-04	47796	TW	8/20-8/21	6PM-9PM	BLC 101	
MLS-3874-01	47793	S	9/7	9AM-4PM	BLC 101	
MLS-3874-05	47797	TW	9/17-9/18	6PM-9PM	BLC 101	
MLS-3874-02	47794	S	10/5	9AM-4PM	BLC 101	
MLS-3874-06	47798	TW	10/22-10/23	6PM-9PM	BLC 101	
MLS-3874-03	47795	S	11/9	9AM-4PM	BLC 101	
MLS-3874-07	47799	S	12/7	9AM-4PM	BLC 101	

### Spring

MLS-3874-04	48471	S	1/25	9AM-4PM	BLC 101	
MLS-3874-05	48472	S	2/8	9AM-4PM	BLC 101	
MLS-3874-01	48467	MT	3/3-3/4	6PM-9PM	BLC 101	
MLS-3874-06	48473	S	4/4	9AM-4PM	BLC 101	
MLS-3874-02	48468	MT	4/21-4/22	6PM-9PM	BLC 108	
MLS-3874-03	48470	S	3/21	9AM-4PM	BLC 101	
MLS-3874-07	48474	S	5/2	9AM-4PM	BLC 101	

### Summer

MLS-3874-03	48469	MT	5/19-5/20	6PM-9PM	BLC 101	
-------------	-------	----	-----------	---------	---------	--

## CompTIA A+

This course is intended for those preparing for a career as an entry-level Information Technology professional or a Personal Computer service technician and will provide the background knowledge and skills required to be successful on the job. In this course, students will learn the essential skills and information needed to install, upgrade, repair, configure, troubleshoot, optimize and perform preventative maintenance of basic personal computer hardware and operating systems. In addition, this course will assist you in preparing for the CompTIA A+ certification exam. Registration fees do not include CompTIA A+ certification exam fees.

Instructor: Merritt						Cost: \$180
Course Code	Section	Days	Date	Time	Loc	
NET-7005-01	47654	TH	8/15-12/12	6PM-9PM	ADT 116	



START LOCAL. GO FAR.

www.rockinghamcc.edu | 336-342-4261

# Animal Care

## Animal Care – Certificate Program

This hybrid program is designed for students who would like to assist a veterinarian in maximizing the health care of animals. The program is intended to train individuals to gain knowledge, basic skills and dog grooming abilities necessary to perform in a veterinary office at an entry level position. Fee includes dog grooming classes and online Veterinary Assistant courses. Labs will require purchase of tools to groom your pet. For additional questions, call Cathy Carter 342-4261, ext. 2124. Prepayment required. Get Your Groom On is located at 311 Academy St., Madison.

Instructor: Varies						Cost: \$180
Course Code	Section	Days	Date	Time	Loc	
ANS-7004-02	47388	Th	8/14-12/6	6PM-9PM	Online	GYGO
			8/1-11/15			

## Dog Grooming

Course topics include small animal grooming, proper use and care of professional grooming tools, basic small animal anatomy, animal safety, handling/controlling small animals, parasite recognition, animal first aid, and skin disorders. Business operation basics will also be taught including simple recordkeeping, retail merchandising, knowledge of supplies and shop setup, proper client/technician/veterinary relationships, and appropriate business telephone use. For additional questions, call Cathy Carter 342-4261, ext. 2124. Get Your Groom On is located at 311 Academy St., Madison.

Instructor: Oakes						Cost: \$125
Course Code	Section	Days	Date	Time	Loc	
ANS-7101-01	47385	Th	8/1-11/14	6PM-9PM	GYGO	

## Learn to Groom Your Own Dog First

Learn to groom your own dog, first. Hands on instructions for head to toe pet grooming. Includes bathing, body trims, nail care, skin care and pad trimming. All fur babies welcome. Get Your Groom On is located at 311 Academy St., Madison.

Instructor: Oakes						Cost: \$70
Course Code	Section	Days	Date	Time	Loc	
ANS-7102-01	47390	T	8/6-9/10	6PM-8PM	GYGO	
ANS-7102-02	47389	T	9/17-10/22	6PM-8PM	GYGO	

# EARN YOUR CERTIFICATE IN INFORMATION TECHNOLOGY

- ◆ A+ Essentials
- ◆ Cybersecurity
- ◆ Network+ and Security+ Essentials
- ◆ IT Support Foundations
- ◆ Web Technologies

- ◆ Leads to Industry-Recognized Credentials
- ◆ Leads to Entry-Level Employment

# Arts & Hobbies

## Drawing with Colored Pencils

Drawing with colored pencils can enhance your creations. Learn how to properly blend colored pencils with traditional black to create colorful sketches. You will need a sketch pad (spiral bound regular size), a box of colored pencils, black pencils, eraser, and a sponge or paper towels which will cost an additional \$20 and are needed for use during the first class. Beginners as well as advanced students are welcome. No textbook required.

Instructor: Boles						Cost: \$70
Course Code	Section	Days	Date	Time	Loc	
CSP-7128-01	48465	T	3/24-5/12	1:30PM-4:30PM	BLC 101	

## The Art Of Drawing

Learn the art of drawing a variety of subjects. A sketch diary will be kept. You will need a regular size spiral bound sketch pad, pencils, eraser, sponge or paper towels, which will cost an additional \$15 and are needed for use during the first class. Beginners as well as advanced students are welcome. No textbook required.

Instructor: Boles						Cost: \$70
Course Code	Section	Days	Date	Time	Loc	
CSP-7127-01	48462	T	1/21-3/10	1:30PM-4:30PM	BLC 101	

## Drawing in a Sketchbook

Draw in a sketchbook with more skill than ever before. You will learn proper use of keeping a sketchbook, practicing sketching and drawing exercises ranging from shapes to full sketches. Worksheets will be used. You will need a spiral bound sketchbook, drawing pencils, eraser, and paper towels to wipe the table, soft brush for brushing away eraser shavings which will cost an additional \$15 and are needed for use during the first class. Beginners as well as advanced students are welcome. No textbook required.

Instructor: Boles						Cost: \$70
Course Code	Section	Days	Date	Time	Loc	
CSP-7125-01	48460	T	10/1-11/19	1:30PM-4:30PM	BLC 101	

## Annual Holiday Painting Class

Paint holiday themes on small canvases for keeping or gifting this holiday season. This annual class is very popular, so register early! The instructor will supply many decorative paints and papers. You will need 8 or more small canvases, basic brushes, a table cover, paper plates and towels, a water container, and a table covering which will cost an additional \$25-\$30 and are needed for use during the first class. All skill levels welcome. No textbook required.

Instructor: Boles						Cost: \$70
Course Code	Section	Days	Date	Time	Loc	
CSP-7126-01	48461	W	10/30-12/18	1PM-4PM	BLC 101	

## Painting a Chinqua Penn Scene

Paint an historic Chinqua Penn scene, a favorite local destination. This acrylic landscape painting class will work from a reference photo taken by photographer Rhonda Tuck.

You will need a 16x20 canvas, tablecloth, water container, paper towels and plates, and basic acrylic paints and brushes which will cost an additional \$25-\$30 and are needed for use during the first class. All skill levels welcome. No textbook required.

Instructor: Boles						Cost: \$70
Course Code	Section	Days	Date	Time	Loc	
CSP-7119-01	48453	W	1/8-2/26	1PM-4PM	BLC 101	

## Painting on a Black Canvas

Paint on a black canvas this year, rather than on the traditional white. Using brightly colored acrylic paints, this technique will create a unique landscape painting. The instructor will help each student one-on-one through every step of the process, in a layering wet on wet style. Needed supplies are a 16x20 black canvas, basic acrylic brushes, bright colors of acrylic paint, water container, paper towels and plates, and a table covering which will cost an additional \$25-\$30 and are needed for use during the first class. All skill levels welcome. No textbook required.

Instructor: Boles						Cost: \$70
Course Code	Section	Days	Date	Time	Loc	
CSP-7123-01	48458	W	9/4-10/23	1PM-4PM	BLC 101	

## Painting with Impressionist Background

A loosely painted Impressionist background with a more realistic focal point is the goal of this class. You will need a 16x20 canvas, tablecloth, paper plates and towels, a water container, and basic acrylic paint which will cost an additional \$25-\$30 and are needed for use during the first class. Brushes will be gone over in class. All skill levels welcome. No textbook required.

Instructor: Boles						Cost: \$70
Course Code	Section	Days	Date	Time	Loc	
CSP-7122-01	48457	W	3/25-5/13	1PM-4PM	BLC 101	

## Watercolor Landscapes

Paint beautiful watercolor landscapes and learn to finish multiple artworks. You will need watercolor pad paper regular size, tubes of watercolor paints, basic brushes made for watercolor, paper towels, a mixing plate or dish, and a water container which will cost an additional \$20 and are needed for use during the first class. All skill levels welcome. No textbook required.

Instructor: Boles						Cost: \$70
Course Code	Section	Days	Date	Time	Loc	
CSP-7120-01	48455	W	1/8-2/26	9AM-12PM	BLC 101	

## Watercolor Painting

Watercolor paints will be used in this class to complete a pad of pictures. Learn the proper use of brushes and watercolor paints, how to blend and mix color, how to use a paint palette, and blending and layering color. You will need basic tube watercolors, basic watercolor brushes, a palette, paper towels, water container, pad of watercolor paper, and a table covering which will cost an additional \$25-\$30 and are needed for use during the first class. All skill levels welcome. No textbook required.

Instructor: Boles						Cost: \$70
Course Code	Section	Days	Date	Time	Loc	
CSP-7124-01	48459	W	9/4-10/23	9AM-12PM	BLC 101	

### Watercolor Scenes

Paint watercolor scenes using the proper watercolor supplies, techniques, color mixture, and methods. You will need tube watercolors, basic watercolor brushes, paper towels, table cloth, plate or mixing palette, pad of watercolor paper regular size which will cost an additional \$20 and are needed for use during the first class. All skill levels welcome. No textbook required.

Instructor: Boles Cost: \$70

Course Code	Section	Days	Date	Time	Loc
CSP-7121-01	48456	W	3/25-5/13	9AM-12PM	BLC 101

### Exploring Clay and Ceramics

Learn how to design and make pottery using the potter's wheel and hand-building techniques. This course is designed for beginner, intermediate, and advanced students, and will provide the skills to design and make ceramic objects, apply glazes, load kilns, and operate within a cooperative studio.

Instructor: Winslow Cost: \$280

Course Code	Section	Days	Date	Time	Loc
PRC-7144-01	48440	TTH	8/22-12/12	6PM-9PM	CCA

### Wheel Throwing and Hand Building Pottery

Learn how to design and make pottery using the potter's wheel and hand-building techniques. This 48-hour course is designed for beginner, intermediate, and advanced students. A focus on individual instruction will allow each student explore working with clay as a hobby or a profession. This course will introduce students the skills to design and make ceramic objects, apply glazes, load kilns, and operate within a cooperative studio. In-class demonstrations, handouts, videos, and images will be used to enrich the learning environment. New students are encouraged to purchase a basic pottery tool kit.

Instructor: Winslow Cost: \$175

Course Code	Section	Days	Date	Time	Loc
PRC-7145-01	48441	M	8/19-12/09	9AM-12PM	CCA

### Cake Decorating

In this Cake Decorating class, students learn to design and decorate, seasonal, birthday, and every day cakes, make frosting, and use different cake decorating tips. Students will design a cake to take home. Supplies extra.

Instructor: Carter Cost: \$70

Course Code	Section	Days	Date	Time	Loc
HOS-7401-01	48301	T	10/1-11/5	6PM-9PM	ELSS

### Music Production

Learn how to create music using computer software and live instrumentation. Students will be able to edit and create music for commercials and movies. Course is taught by experienced music professional Cedric Hester of the popular Christian rap group Deacon Authority.

Instructor: Hester Cost: \$70

Course Code	Section	Days	Date	Time	Loc
ENT-7001-02	48489	Th	8/29-10/24	6PM-9PM	ADT 100, 102
Spring					
ENT-7001-01	48490	Th	2/6-3/26	6PM-9PM	ADT 100, 102

### A New Focus: Black-n-White Photography

There are two reasons to shoot black and white photography. One is because you think it looks old-fashioned and it's a cool effect. A better reason to shoot black and white photography is because of the lessons it can teach you – like values. We're not talking about ethical values but the value in a monotone sense where color is taken out of the picture and we can focus on value as a single element. Then the class will move into a more advanced session of portrait, landscape and motion photography. This course will include several Sunday field trips. Dates and times TBA after first class meeting.

Instructor: Barbour Cost: \$70

Course Code	Section	Days	Date	Time	Loc
PHO-7067-01	48227	W	9/11-11/6	6PM-8PM	TBST

### Digital Photography

This course introduces first-time users of digital cameras to its uses, capabilities, limitations, functions, and subsequent advantages over traditional film cameras. Course work includes lighting techniques, subject selection, processing images, and printing. Upon completion, students can apply their knowledge for general purpose shooting as well as specialized applications for documentation, insurance, advertising, and internet marketplaces (eBay/Craigslist). This course will include several Sunday field trips. Dates and times TBA after first class meeting.

Instructor: Barbour Cost: \$70

Course Code	Section	Days	Date	Time	Loc
PHO-3001-01	48228	W	1/15-3/11	6PM-8PM	TBST

# SAFE DRIVING COURSES

Completion of a 3-hour or 6-hour course could help prevent the assessment of insurance points and driver's license points. For more information, please call 336-342-4261, ext. 2348

## Fundamentals of Stained Glass

Learn stained glass making artistry at the introductory level. Course includes discussion on the history and trends of the art, practice in the art of stained glass making, and information to build and supply appropriate studios. Leaded glass construction will also be discussed but will not be a focus. Upon completion, students will be prepared to either advance to a higher skill level or to fabricate and market their goods. Safety glasses are required. Students need to obtain the following materials: glass cutter, glass pliers, glass foil, solder, soldering iron, rheostat, workboard (instructions on how to build will be given at the first class). This initial supplies investment will range from \$200-\$300, depending upon the quality of items purchased. Items may be purchased from Delphi.com, GlassCrafters.com, Angels Glass (in Burlington), or from other online websites. Register early - only six students allowed per class.

Instructor: Butler						Cost: \$90
Course Code	Section	Days	Date	Time	Loc	
PRC-7147-01	48413	Th	8/15-10/3	6PM-9PM	CCWW	
PRC-7147-02	48416	Th	10/17-12/12	6PM-9PM	CCWW	
<b>Spring</b>						
PRC-7147-01	48414	Th	1/9-2/27	6PM-9PM	CCWW	
PRC-7147-02	48415	Th	3/5-4/30	6PM-9PM	CCWW	

# Woodworking

## Fine Points of Furniture Construction

This Fine Points of Furniture Construction course is designed to cover the heritage art of woodworking at an advanced level. Coursework will include discussion on the history, trends, and practice of the art and information to build and supply appropriate studios. Upon completion, students will be prepared to either advance to a higher skill level or to fabricate and market their goods. Safety glasses and hearing protection are required. Students will need wood for projects. Students will have learned about the type and quantity of wood needed while completing the Fundamentals class. Wood obtained from anywhere other than the CCWW must be inspected and approved by the instructor. \*Must have taken the Fundamental Woodworking class prior to enrolling in this class.\* Class will meet during Fall Break (week of Oct. 14). \$20 supply fee included.

Instructor: Smith						Cost: \$200
Course Code	Section	Days	Date	Time	Loc	
PRC-7127-01	47750	TTh	9/3-11/21	8AM-3:30PM	CCWW	
<b>Spring</b>						
PRC-7127-01	48439	TTh	1/28-4/16	8AM-3:30PM	CCWW	

## Fundamentals of Woodturning – Saturday Workshop

This "learn to turn" wood workshop is a much-abbreviated version of the eight-week turning class. It focuses on safety, tools, sharpening, chucks, and techniques. The scope of several projects will be covered, demonstrating a variety of aspects of turning. Students can bring their own face shield and hearing protection or use what we have at the center. The instructor will provide wood and any other needed supplies for the workshop. \$20 supply fee included.

Instructor: Butler						Cost: \$70
Course Code	Section	Days	Date	Time	Loc	
SEF-7174-03	48407	S	8/17	9AM-4PM	CCWW	
SEF-7174-01	48565	S	10/12	9AM-4PM	CCWW	
<b>Spring</b>						
SEF-7174-01	48405	S	1/11	9AM-4PM	CCWW	
SEF-7174-02	48406	S	3/7	9AM-4PM	CCWW	

## Intro to Bowls

Woodturn your own unique bowl for beautiful display or for use. All skill levels welcome. Topics include safety, tool selection, wood selection (green wood vs. dry), finishing, and coloring and texturing as time permits. Students can bring their own face shield and hearing protection or use what we have at the center. The instructor will provide the students with wood and any other needed supplies for the workshop. \$20 supply fee included. Students will need a 6"x6"x2" or 6"x6"x3" piece of wood (known as a "blank"), as well as sandpaper. These items will cost approximately \$20 and can be purchased from Wall Lumber, online, or from the instructor at the beginning of class.

Instructor: Butler						Cost: \$70
Course Code	Section	Days	Date	Time	Loc	
SEF-7138-01	48427	S	8/24	9AM-4PM	CCWW	
<b>Spring</b>						
SEF-7138-01	48428	S	4/4	9AM-4PM	CCWW	

## Fundamentals of Woodworking

This Fundamentals of Woodworking course covers the heritage art of woodworking at the introductory level. Course work will include discussion on history and trends, practice, and information to build and supply appropriate studios. Upon completion, students will be prepared to either advance to a higher skill level or to fabricate and market their goods. Safety glasses and hearing protection are required. Students will need wood for projects. Discussion is held at the beginning of class about what types of wood would work best for each student's project and guidance is provided about obtaining wood. The quantity and purchase amount will vary per student and per project but will cost \$50 or less. The Center for Creative Woodworking has poplar wood for purchase. If students prefer wood other than poplar, it may be purchased elsewhere. Please call the instructor at 336-394-4718 for recommendations. Some students prefer to bring in wood from other sources, such as an old homeplace or a fallen tree. However, neither Rockingham Community College staff nor the Center for Creative Woodworking staff will cut down trees or retrieve fallen wood from private community members. Wood obtained from anywhere other than the CCWW must be inspected and approved by the instructor. Class will meet during Fall Break (week of Oct. 14). \$20 supply fee included.

Instructor: Smith						Cost: \$145
Course Code	Section	Days	Date	Time	Loc	
PRC-7100-01	47751	T	9/3-11/19	5:45-9:15PM	CCWW	
<b>Spring</b>						
PRC-7100-01	48438	T	1/28-4/14	5:45-9:15PM	CCWW	



Learn Something New!

## Intermediate Woodworking

This intermediate woodworking course covers the heritage art of woodworking at the intermediate level, and includes discussion on history and trends, practice, and information to build and supply appropriate studios. Upon completion, students will be prepared to advance to a higher skill level or to fabricate and market their goods. Students will need wood for projects. Students will have learned about the type and quantity of wood needed while completing the Fundamentals class. Wood obtained from anywhere other than the CCWW must be inspected and approved by the instructor. \*Must have taken the Fundamental Woodworking class prior to enrolling in this class.\* \$20 supply fee included.

Instructor: Smith				Cost: \$145		
Course Code	Section	Days	Date	Time	Loc	
PRC-7143-01	47752	Th	9/5-11/21	5:45-9:15PM	CCWW	
<b>Spring</b>						
PRC-7143-01	48437	Th	1/30-4/16	5:45-9:15PM	CCWW	

## Intro to Platters

Create a wide-rim platter for a gift or for yourself. Topics include safety, tool selection, finishing, and (if time permits) coloring and texturing. \*Previous woodturning experience is required. The "Learn to Turn" one-day workshop will meet this requirement.\*

Instructor: Butler				Cost: \$70		
Course Code	Section	Days	Date	Time	Loc	
SEF-7161-01	48399	S	10/19	9AM-4PM	CCWW	

## Egg Kaleidoscope

Make kaleidoscopes in the shape of an egg, just in time for Easter! We will use the lathe and drill press.

Instructor: Butler				Cost: \$60		
Course Code	Section	Days	Date	Time	Loc	
SEF-7142-01	48429	S	4/11	9AM-2PM	CCWW	

## Last Minute Christmas Gifts

Make Christmas gifts for your loved ones by hand, making them extra-special. All skill levels welcome. Students can bring their own face shield and hearing protection or use what we have at the center. The instructor will provide wood and any other needed supplies for the workshop.

Instructor: Butler				Cost: \$70		
Course Code	Section	Days	Date	Time	Loc	
SEF-7177-01	48401	S	12/07	9AM-4PM	CCWW	

## Make a Cutting Board

Make a unique cutting board using woodshop tools. All skill levels welcome. Students can bring their own face shield and hearing protection or use what we have at the center. Students will need wood for projects.

Instructor: Butler				Cost: \$70		
Course Code	Section	Days	Date	Time	Loc	
SEF-7151-01	48400	S	11/16	9AM-4PM	CCWW	

## Pen Turning: Make One for Your Sweetheart

This pen turning class is always popular. Students will need wood or acrylic for making their pen – measurements should be approximately ¾"x¾"x6". This item is known as a "blank" and



will cost no more than \$15 at Wall Lumber, Woodcraft, online, or you may bring a blank which holds meaning for you (perhaps from an ancestral home). The instructor must approve all blanks brought into the CCWW. \$20 supply fee is included.

Instructor: Butler				Cost: \$60		
Course Code	Section	Days	Date	Time	Loc	
SEF-7110-01	48476	9/14	S	9AM-2PM	CCWW	
<b>Spring</b>						
SEF-7110-01	48475	2/15	S	9AM-2PM	CCWW	

## Open Shop

Open shop! Woodturning enthusiasts and beginners alike may bring their own projects to work on at the Center for Creative Woodworking. A knowledgeable and experienced instructor will be available to work with students closely to instruct on specific techniques and answer questions. Students can bring their own tools and safety equipment (face shield, hearing protection) or use tools and safety equipment we have at the center. Students will need miscellaneous wood, sandpaper, and finish.

Instructor: Butler				Cost: \$70		
Course Code	Section	Days	Date	Time	Loc	
CSP-7118-01	48431	S	9/21	9AM-4PM	CCWW	
CSP-7118-02	48432	S	11/9	9AM-4PM	CCWW	
<b>Spring</b>						
CSP-7118-01	48433	S	1/18	9AM-4PM	CCWW	
CSP-7118-03	48435	S	2/8	9AM-4PM	CCWW	
CSP-7118-02	48434	S	3/14	9AM-4PM	CCWW	
CSP-7118-04	48436	S	5/2	9AM-4PM	CCWW	

## Woodturning Studio

Woodturning Studio students have access to RCC's Center for Creative Woodworking to work on independent projects or learn something new. All skill levels welcome. The instructor and CCWW staff will be available to work with students closely to instruct on specific techniques and answer questions. Students can bring their own face shield and hearing protection or use what we have at the center. Students will need wood for projects. Students will have learned about the type and quantity of wood needed while completing the prerequisite Fundamentals class. Wood obtained from anywhere other than the CCWW must be inspected and approved by the instructor. \$20 supply fee included. Students will need misc. wood, sandpaper, and finish. These items will cost approx. \$100 and can be purchased from Wall Lumber, Lowes, online, or from the instructor. No class Sept. 3, nov. 25 or Jan. 20.

Instructor: Moffett				Cost: \$90		
Course Code	Section	Days	Date	Time	Loc	
PRC-7108-01	48411	M	8/12-10/7	6PM-9PM	CCWW	
PRC-7108-02	48563	M	10/21-12/16	6PM-9PM	CCWW	
<b>Spring</b>						
PRC-7108-01	48408	M	1/6-3/2	6PM-9PM	CCWW	
PRC-7108-02	48410	M	3/16-5/4	6PM-9PM	CCWW	



# Emergency Medical Services

For information on the following health certification courses, please contact Jason Collins, EMS Program Director, at 336-342-4261, ext. 2111 or collinsj1503@rockinghamcc.edu or Donna Thompson, Curriculum Assistant for EMS, at 336-342-4261, ext. 2602 or thompsond0374@rockinghamcc.edu. All classes have pre-registration REQUIRED.

## Emergency Medical Technician Initial

The EMT program is designed to teach basic life support skills. EMTs are able to function in many areas including EMS systems, fire departments, hospitals, rescue squads and physician offices. The class consists of lectures and hands-on skills instruction as well as field clinical opportunities. Upon successful completion of this course, students will be eligible to sit for the North Carolina or National Registry EMT examination. Prices below include tuition as well as additional fees of clinical uniform shirts, HCP CPR card fee, and malpractice insurance. Textbook and workbooks required; contact the bookstore to purchase. North Carolina tuition exemption status does apply; however, additional fees and books are up to students. Textbooks required: "Emergency Care, 13th Edition" by Brady (ISBN 9780134024554), and "Workbook for Emergency Care, 13th Ed" by Brady (ISBN 9780134010731).

Instructor:	TBA	Cost:	\$180	Fees:	\$68	Total cost:	\$248
Course Code	Section	Days	Date	Time	Loc		
EMS-4200-02	48189	TTh	8/20 – 12/21	6PM-10PM	OHS 207		
			S (every other starting 9/14)	8AM-5PM	OHS 207		
EMS-4200-03	48192	MW	8/26 – 12/21	6PM-10PM	OHS 207		
			S (every other starting 9/7)	8AM-5PM	OHS 207		
<b>Spring</b>							
EMS-4200-01	48283	T/Th	1/7 – 5/14	6PM-10PM	OHS 207		
			S (every other starting 1/18)	8AM-5PM	OHS 207		
EMS-4200-02	48284	M/W	1/13 – 5/11	6PM-10PM	OHS 207		
			S (every other starting 1/25)	8AM-5PM	OHS 207		

## Paramedic Initial

This course meets National Standard Curriculum. This course will meet two nights a week and every other Saturday. The occasional Sunday may be required; students will know in advance when those will be. The course provides the knowledge, skills and attributes to provide advanced emergency medical care as a paramedic for critical and emergent patients who access the emergency medical system, and prepares graduates to enter the workforce. Students will gain complex knowledge, competency, and experience while employing evidence based practice under medical oversight, and serve as a link from the scene into the healthcare system. Employment opportunities include providers of emergency medical services, convalescent ambulance services, fire departments, rescue agencies, hospital specialty areas, industry, educational and government agencies. The class consists of lectures and hands-on skills instruction as well as field clinical opportunities. Upon successful completion of this course, students will be eligible

to sit for the North Carolina State Paramedic examination. Students must be certified as a North Carolina or National Registry EMT. Prices below include tuition as well as additional fees of clinical uniform shirts, CPR card fee and malpractice and accident Insurance. Textbooks are required, contact the bookstore to purchase these. NC fee-exempt status does apply, however additional fees and books are up to the individual. Textbooks required: "Paramedic Care: Principles & Practice, Volumes 1-5" (ISBN 9780134575964); "Basic Arrhythmia's, 8th Edition" (ISBN 9780134380995); and "Prehospital Emergency Pharmacology, 7th Ed" (ISBN 9780135138229).

Instructor:	TBA	Cost:	\$360	Fees:	\$225	Total cost:	\$585
Course Code	Section	Days	Date	Time	Loc		
EMS-4400-01	48194	T/Th	7/29/19-9/30/20	6PM-10PM	OHS 120		
			S (every other)8/10	8AM-5PM	OHS 120		

## Cardiovascular Technician

This program prepares students to become certified EKG Technicians. This course covers the anatomy and physiology of the heart, including the electrical conduction system and how it affects heart function, principles of EKG, dysrhythmia recognition of sinus, junctional/atrial rhythms, heart blocks and bundle branches, and ventricular ectopy rhythms. Students will build skills in operating EKG equipment, including running and mounting strips, reading and interpreting 22 types of cardiac lead tracings produced from 12-lead and 5-lead monitors, and understanding the basics of capnography as it relates to heart function. This program will prepare students for the Certified EKG Technician (CET) Exam through the National Healthcareer Association (NHA).

Instructor(s):	TBA	Cost:	\$180	Fees:	\$68	Total cost:	\$248
Course Code	Section	Days	Date	Time	Loc		
ICV-3111-01	48220	T/Th	8/27-11/21	5:30-9:30PM	OHS 123		

# Health Certifications

## First Aid

The American Heart Association HeartSaver First Aid is a classroom, video-based, instructor-led course that teaches critical skills to respond to and manage an emergency in the first few minutes until emergency services (EMS) arrives. Students also learn skills such as how to treat bleeding, sprains, broken bones, shock and other first aid emergencies. When the course is completed, students receive an AHA First Aid recognition card that is valid for 2 years. There are no fee exemptions and First Aid card fees are included in the cost. *Pre-payment and pre-registration is required no later than three business days prior to the class.* AHA First Aid Cards are now eCards, you must have an email address to access your card. To pre-register, contact Donna Thompson at 336-342-426, ext. 2602.

Instructor:	Varies	Cost	\$30	Fees:	\$5	Total cost:	\$35
Course Code	Section	Days	Date	Time	Loc		
SEF-7077-01	48209	S	8/24	2PM-5PM	OHS 131		
SEF-7077-03	48211	F	9/13	2PM-5PM	OHS 131		
SEF-7077-02	48210	S	10/26	2PM-5PM	OHS 131		
SEF-7077-04	48212	F	11/8	2PM-5PM	OHS 131		
<b>Spring</b>							
SEF-7077-01	48428	S	2/29	2PM-5PM	OHS 131		
SEF-7077-02	48249	S	4/25	2PM-5PM	OHS 131		

## CPR (American Heart Association-Basic Life Support – Health Care Provider Course)

Learn how to recognize an emergency, care for conscious and unconscious choking victims, recognize signs of a heart attack, rescue breathing and cardiopulmonary resuscitation. This course also provides an introduction to automated external defibrillation and is approved by American Heart Association. When the course is completed, students receive an AHA/BLS recognition card that is valid for 2 years. No fee exemptions. Prepayment and pre-registration is required no later than one business week prior to class. AHA Cards are now eCards, you must have an email address to access your card. To pre-register, contact Donna Thompson at 336-342-4261, ext. 2602.

Instructor: Varies		Cost: \$45		Fees: \$10		Total cost: \$55	
Course Code	Section	Days	Date	Time	Loc		
SEF-7010-01	48200	SA	8/24	9AM-1PM	OHS 131		
SEF-7010-05	48205	F	9/13	9AM-1PM	OHS 131		
SEF-7010-02	48201	SA	9/28	9AM-1PM	OHS 131		
SEF-7010-06	48206	F	10/11	9AM-1PM	OHS 131		
SEF-7010-03	48202	SA	10/26	9AM-1PM	OHS 131		
SEF-7010-07	48207	F	11/8	9AM-1PM	OHS 131		
SEF-7010-04	48204	SA	11/23	9AM-1PM	OHS 131		
SEF-7010-08	48208	F	12/13	9AM-1PM	OHS 131		
<b>Spring</b>							
SEF-7010-01	48250	F	1/10	9AM-1PM	OHS 131		
SEF-7010-02	48251	SA	1/25	9AM-1PM	OHS 131		
SEF-7010-03	48252	F	2/14	9AM-1PM	OHS 131		
SEF-7010-04	48253	SA	2/29	9AM-1PM	OHS 131		
SEF-7010-05	48254	F	3/20	9AM-1PM	OHS 131		
SEF-7010-06	48255	S	3/28	9AM-1PM	OHS 131		
SEF-7010-07	48257	F	4/17	9AM-1PM	OHS 131		
SEF-7010-08	48258	S	4/25	9AM-1PM	OHS 131		
SEF-7010-09	48261	F	5/1	9AM-1PM	OHS 131		

## AHA BLS Instructor

This is the classroom component that must be completed to become a CPR instructor. For information on the complete requirements to become an American Heart Association Instructor, please visit: <http://www.heart.org> and follow the link for Instructors and Training Centers. Please contact Donna Thompson at 336-342-4261 ext. 2602 for registration and additional information. NC fee exempt status does apply.

Instructor: Donna Thompson		Cost \$70.			
Course Code	Section	Days	Date	Time	Loc
SAF-3023-01	48176	S	10/19	8AM-5PM	OHS 131
<b>Spring</b>					
SAF-3023-01	48291	S	2/1	8AM-5PM	OHS 131

## Advanced Cardiac Life Support

ACLS is an advanced, Instructor-led classroom course that highlights the importance of team dynamics and communication, systems of care and immediate post-cardiac arrest care. It also covers airway management and related pharmacology. In this course, skills are taught in large, group sessions and small, group learning and testing stations where case-based scenarios are presented. Pre-payment and pre-registration is required no later than three business days prior to the class. To pre-register, contact Donna Thompson at 336-342-4261, ext. 2602. NC fee exempt status does apply.

Instructor: Varies		Cost: \$70		Fees: \$10		Total cost: \$80	
Course Code	Section	Days	Date	Time	Loc		
EMS-3048-01	48180	FSA	12/6-12/7	8AM-5PM	OHS 120		

## Advanced Cardiac Life Support Recertification

Pre-payment and pre-registration is required no later than three business days prior to the class. To pre-register, contact Donna Thompson at 336-342-4261, ext. 2602. NC fee exempt status does apply.

Instructor: Varies		Cost: \$70		Fees: \$10		Total cost: \$80	
Course Code	Section	Days	Date	Time	Loc		
EMS-3048-02	48181	S	12/7	8AM-5PM	OHS 120		
<b>Spring</b>							
EMS-3048-01	48293	S/SU	3/7-3/8	8AM-5PM	OHS 120		

## AHA ACLS Instructor

This is the classroom component that must be completed to become an ACLS instructor. For information on the complete requirements to become an American Heart Association Instructor, please visit: <http://www.heart.org> and follow the link for Instructors and Training Centers. Please contact Donna Thompson at 336-342-4261, ext. 2602 for registration and additional information.

Instructor: Donna Thompson		Cost \$70			
Course Code	Section	Days	Date	Time	Loc
EMS-3104-01	48177	F	11/22	8AM-5PM	TBA
<b>Spring</b>					
EMS-3104-01	48292	F	3/6	8AM-5PM	TBA

## eLearning CPR Skills Practice & Testing (approx. 1 hour)

Are you seeking an alternative to classroom training or wishing to renew an existing AHA certification? The eLearning online course offers a flexible training option. The online cognitive portion, provided by AHA, allows students to complete learning at their own pace and convenience. Students should schedule a Skills Practice and Testing session prior to taking the on-line cognitive portion. Once students complete the online cognitive portion they should attend their scheduled hands-on skills practice and testing session to complete their certification. During this session students will have the opportunity for one-on-one practice before a skill tests with a certified AHA instructor. Upon successful completion of these parts students will be proficient in the required skills and will receive a certification in the associated discipline. The student will need to bring the eLearning certificate to the appointment along with a valid email address for the certificate. AHA CPR Cards are now eCards, you MUST have an email address to access your card. Appointment times are Monday/Wednesday 9-5; Tuesday/Thursday 9-7 and Friday 9-12. Appointments will be given in one hour increments. To make an appointment contact Donna Thompson at 336-342-4261, ext. 2602 or [thompsond0374@rockinghamcc.edu](mailto:thompsond0374@rockinghamcc.edu).

Instructor: Varies		Cost: \$25		Fees: \$10		Total cost: \$35	
Course Code	Section	Days	Date	Time	Loc		
SEF-7155-01	48213	M-F	8/12-8/16	–	OHS 101		
SEF-7155-02	48214	M-F	9/9-9/13	–	OHS 101		
SEF-7155-03	48215	M-F	10/7-10/11	–	OHS 101		
SEF-7155-04	48216	M-F	11/11-11/15	–	OHS 101		
SEF-7155-05	48218	M-F	12/9-12/13	–	OHS 101		
<b>Spring</b>							
SEF-7155-03	48268	M-F	1/13-1/17	–	OHS 101		
SEF-7155-02	48267	M-F	2/10-2/14	–	OHS 101		
SEF-7155-04	48269	M-F	3/16-3/20	–	OHS 101		
SEF-7155-01	48266	M-F	4/13-4/17	–	OHS 101		
SEF-7155-05	48270	M-F	5/11-5/15	–	OHS 101		



### Pediatric Advanced Life Support

This classroom, video-based, Instructor-led course uses a series of simulated pediatric emergencies to reinforce the important concepts of a systematic approach to pediatric assessment, basic life support, PALS treatment algorithms, effective resuscitation and team dynamics. The goal of the Pediatric Advanced Life Support Course is to improve the quality of care provided to seriously ill or injured children, resulting in improved outcomes. Pre-payment and pre-registration is required no later than three business days prior to the class. To pre-register, contact Donna Thompson at 336-342-4261, ext. 2602. NC fee exempt status does apply.

Course Code	Section	Days	Date	Time	Loc
EMS-3046-02	48179	FS	9/6-9/7	8AM-5PM	OHS 131
<b>Spring</b>					
EMS-3046-01	48271	FS	4/24-4/25	8AM-5PM	OHS 131

### Pediatric Advanced Life Support Recertification

Pre-payment and pre-registration is required no later than three business days prior to the class. To pre-register, contact Donna Thompson at 336-342-4261, ext. 2602. NC fee exempt status does apply.

Course Code	Section	Days	Date	Time	Loc
EMS-3046-01	48178	S	9/7	8AM-5PM	OHS 131
<b>Spring</b>					
EMS-3046-02	48272	S	4/25	8AM-5PM	OHS 131

### AHA PALS Instructor

This is the classroom component that must be completed to become a PALS instructor. For information on the complete requirements to become an American Heart Association Instructor, please visit: <http://www.heart.org> and follow the link for Instructors and Training Centers. Please contact Donna Thompson at 336-342-4261, ext. 2602 for registration and additional information.

Course Code	Section	Days	Date	Time	Loc
EMS-3105-01	48175	F	8/30	8AM-5PM	TBA
<b>Spring</b>					
EMS-3105-01	48290	F	4/17	8AM-5PM	TBA

### Nurse Aide I

As a certified nurse aide, you have the opportunity to be on the front line of patient care. The nurse aide is one of the most vital contributors to patient care for patients in nursing homes, hospitals, home health and doctor's offices. Learn about a career as a certified nurse aide. The program is a 168-hour course that takes 8-12 weeks to complete. Many individuals use the program as a precursor to the Associate Degree Nursing program or to gain employment within the medical field. Documentation required prior to registration.

Course Code	Section	Days	Date	Time	Loc
NUR-3240-01	47679	M-F	8/19-10/8	8:30AM-4:30PM	OHS 131
Instructor: Varies					
Cost \$206					
		M-Th		8AM-4:30PM	Clinical
NUR-3240-03	47681	M-Th	8/19-12/3	5:30PM-10PM	OHS 131
Instructor: Varies					
Cost \$206					
		M-Th		5:30PM-10PM	Clinical
NUR-3240-02	47680	M-F	10/21-12/12	8:30AM-4:30PM	OHS 131
Instructor: Varies					
Cost \$206					
		M-Th		8AM-4:30PM	Clinical

### Pharmacy Technician

For the Pharmacy Technician class, a pre-test is required and must be completed by midnight on Aug. 8, 2019. Call 336-342-4261, ext. 2225 to arrange for your pre-test. Call Admissions at 336-342-4261 to find out if you are exempt from the math pre-test. Students who have not completed the pre-test or confirmed exemption prior to the deadline will not be allowed to enroll in this class. While not comprehensive, topics in this Pharmacy Technician class include the laws applicable to pharmacy practice, pharmaceutical calculations, pharmacology, drug dispensing and labeling (retail and hospital settings), controlled substance procedures, sterile and non-sterile compounding, and inventory control. This class is designed to teach the student how to prepare and dispense prescribed drugs in the hospital and retail settings under the supervision of a registered pharmacist. Upon completion, students should be prepared to: (1) Perform basic supervised dispensing techniques in a variety of pharmacy settings, and (2) Apply for national certification and take the Pharmacy Technician Certification Exam (PTCE). The PTCE exam must be taken at a Pearson VUE professional testing center. The cost to apply for national certification and take the certification exam is approximately \$130 and is not included in the cost of tuition for this class. It is the student's responsibility to contact Pearson VUE to apply for national certification at <https://home.pearsonview.com/ptcb>, and to schedule, pay for, and complete the certification exam. The Moodle learning management system will be used to supplement learning, so each student must have easy access to a high-speed internet connection. No class Nov. 28 (Thanksgiving). Textbooks required: (1) Mosby's Pharmacy Technician, Principles and Practice, 5th edition; and (2) Mosby's review for the PTCE by James Mizner.

Course Code	Section	Days	Date	Time	Loc
PHM-3250-01	47892	TTh	8/13-12/10	9AM-12PM	ADT 209
Instructor: Madren					
Cost: \$180					

**New Class!**

**SMALL ENGINE REPAIR**

**See page 6**





## Instructor Led Courses

1. Visit [www.ed2go.com/rockcc](http://www.ed2go.com/rockcc) and browse through the courses.
2. After choosing a course, select the title and then "Enroll Now."
3. Follow the steps indicated.
4. On the first day of class, go to [www.ed2go.com/rockcc](http://www.ed2go.com/rockcc).
5. The first two lessons are free during the first week.
6. If you choose to stay in the course, complete the registration form located at [www.ed2go.com/rockcc](http://www.ed2go.com/rockcc), then scan and email to [cartercb@rockinghamcc.edu](mailto:cartercb@rockinghamcc.edu) or fax to 336-342-9986. Once received, you will be emailed online payment information.
7. If you choose not to take the course, do nothing! You will be dropped from the class.

## Individual classes begin each month

Achieving Success with Difficult People  
Administrative Assistant Applications  
Administrative Assistant Fundamentals  
Advanced CSS3 and HTML5  
Beginner's Guide to Getting Published  
Beginning Writer's Workshop  
Blogging and Podcasting for Beginners  
Building Teams That Work  
Business and Marketing Writing  
C# Programming for the Absolute Beginner  
C++ for the Absolute Beginner  
Computer Skills for the Workplace  
Creating a Classroom Website  
Creating Classroom Centers  
Creating Mobile Apps with HTML5  
Creating Web Pages  
Customer Service Fundamentals  
Differentiated Classroom Inst.  
Differentiating K-12 Assessments  
Discover Digital Photography  
Empowering Students With Disabilities  
Enhancing Language Development in Childhood  
Fundamentals of Supervision and Management  
Fundamentals of Supervision and Management II  
Grammar Refresher  
GRE Preparation  
Growing Plants for Fun and Profit  
Guided Reading and Writing: Strategies  
How to Make Money From Your Writing  
Inclusive Classroom: Strategies  
Individual Excellence  
Integrating Technology in the Classroom  
Interpersonal Communication  
Intro to Python 3 Programming  
Intro Adobe Acrobat X  
Intro MS Access 2010  
Intro MS PowerPoint 2010  
Intro MS Publisher 2010  
Introduction to CSS3 and HTML5  
Introduction to Database Development  
Introduction to Digital Scrapbooking

Introduction to Dreamweaver CS6  
Introduction to Illustrator CS6  
Introduction to InDesign  
Introduction to Java Programming  
Introduction to JavaScript  
Introduction to Journalism  
Introduction to Lightroom 5  
Introduction to Networking  
Introduction to Nonprofit Management  
Introduction to Oracle  
Introduction to PC Security  
Introduction to PC Troubleshooting  
Introduction to Programming  
Introduction to Python 2.5 Programming  
Introduction to SQL  
Introduction to Statistics  
Introduction to Visual Basic  
Keys to Effective Communication  
Keys to Successful Money Management Leadership  
Learn to Buy and Sell on eBay  
Manufacturing Applications  
Manufacturing Fundamentals  
Marketing Your Business on the Internet  
Marketing Your Nonprofit  
Mastering Public Speaking  
Mastery of Business Fundamentals  
Performing Payroll in QuickBooks  
Photoshop  
Praxis Core Preparation  
Preschool: Inspiring Lessons  
Professional Sales Skills  
Project Management @ e-Speed  
Project Management Applications  
Project Management Fundamentals  
Publish and Sell Your E-Books  
Purchasing Fundamentals  
Reading Strategies That Work  
Ready, Set, Read!  
Research Methods for Writers  
Response to Intervention Connection  
Romance Writing

Singapore Math Advanced Model Drawing for Grades 6-9  
Singapore Math: Model Drawing for Grades 1-6  
Six Sigma  
Skills for Making Great Decisions  
Small Business Marketing on a Shoestring  
Solving Classroom Discipline Problems  
Spanish  
Start a Pet Sitting Business  
Start and Operate Your Own Home-Based Business  
Start Your Own Arts and Crafts Business  
Start Your Own Consulting Practice  
Start Your Own Gift Basket Business  
Start Your Own Small Business  
Starting a Nonprofit  
Strategies-Differentiated Classroom  
Supply Chain Management Fundamentals  
Survival Kit for New Teachers  
Teaching Adult Learners  
Teaching Math: Grades 4-6  
Teaching Science: Grades 4-6  
Teaching Students With ADHD  
Teaching Students With Autism: Strategies for Success  
Teaching Writing: Grades 4-6  
Teaching Writing: Grades K-3  
The Craft of Magazine Writing  
The Creative Classroom  
The Keys to Effective Editing  
Travel Writing  
Understanding Adolescents  
Understanding the Cloud  
Using the Internet in the Classroom  
Where Does All My Money Go?  
Wireless Networking  
WordPress Websites II  
Work Yourself Happy  
Working Successfully With Learning Disabled Students  
Wow, What a Great Event!  
Write and Publish Your Nonfiction Book  
Write Effective Web Content

# Starting a business is a tremendous undertaking. Let us help you plan for success!



The Small Business Center at RCC delivers **free** seminars to business owners, prospective start-ups, RCC students, and to the general public

## Our topics cover:

- Entrepreneur readiness
- Leveraging Internet resources
- Ecommerce selling and marketing
- Small business funding/financing
- Cash flow for profitability
- Business planning for success
- Marketing/research/analysis
- Taxes/licenses/legal structures
- Building and keeping customers

**For more information, call  
Susan Reagan, Director,  
Small Business Center  
336-342-4261 ext. 2245**

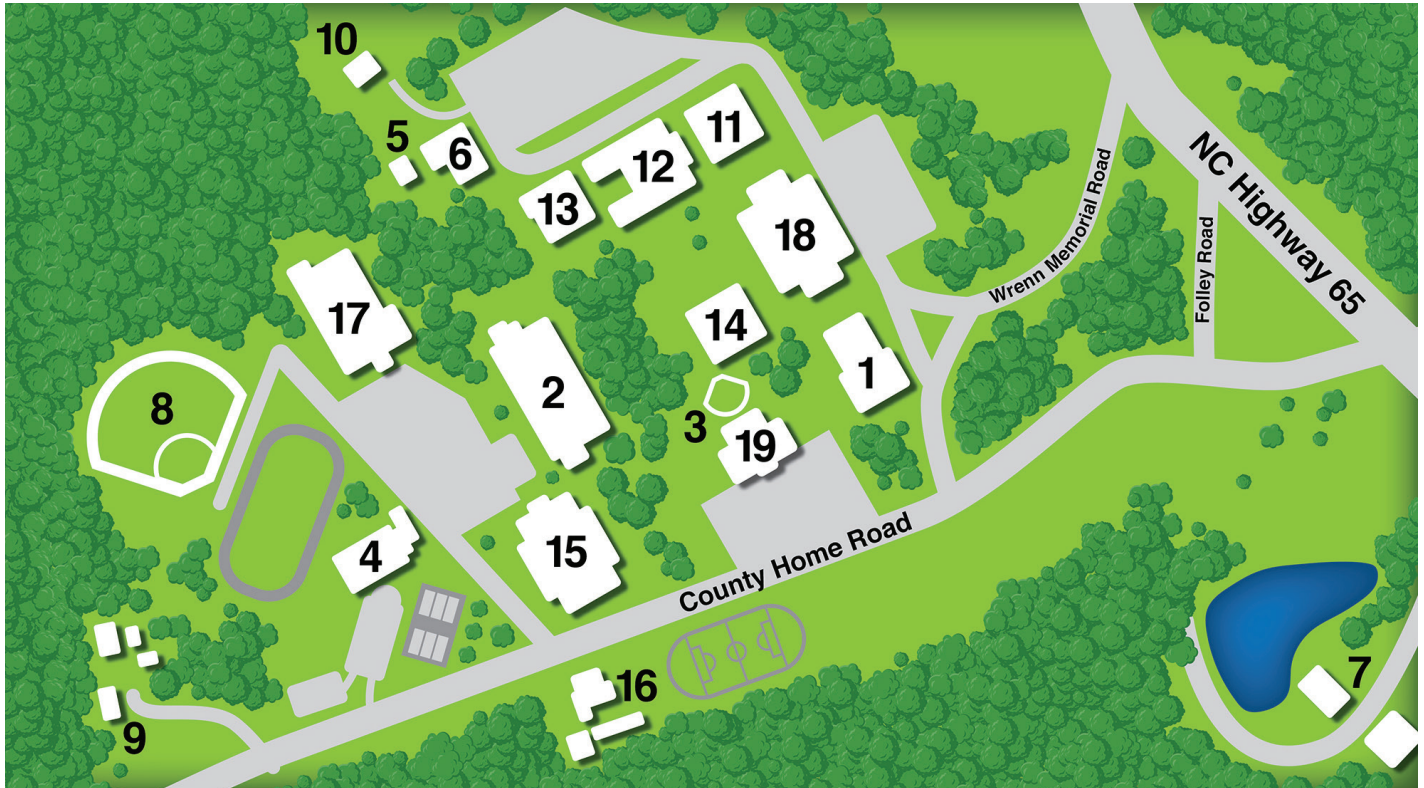
**For one-on-one counseling  
or to register for seminars:  
[www.ncsbc.net/center.aspx?center=75430](http://www.ncsbc.net/center.aspx?center=75430)**

**The Rockingham Community College Small Business Center (SBC)** is located on the RCC campus, with a satellite office at the county economic development department. The SBC provides a range of free services to small business owners, prospective owners and anyone who is determined to be a more successful and fulfilled person. The SBC at RCC is part of the North Carolina Small Business Center Network: <https://www.ncsbc.net/>

Small businesses are vital to Rockingham County and North Carolina. More than 97% of all North Carolina businesses employ less than 100 people and over 80% of all North Carolina businesses employ 20 workers or less. In the coming years, small businesses are expected to generate an additional 900,000 jobs in North Carolina. The SBC helps to foster that growth by offering assistance to small businesses and prospective small business owners through useful information, education and training, counseling and referral.

### **The SBC delivers:**

- **Free seminars critical to small business owners, prospective start-ups, RCC students and to the general public**
- **In-person, one-to-one assistance for small business owners and prospective start-ups**
- **Business and industry resources**
- **Partnerships with federal, state and local resources**



## CAMPUS MAP

- |  |  |
|--|--|
| <ul style="list-style-type: none"> <li>1. Administration Building</li> <li>2. Advanced Technologies Building</li> <li>3. Apple Amphitheater</li> <li>4. Bishopric Lifelong Learning Center</li> <li>5. Building Trades Laboratory</li> <li>6. Center for Creative Arts</li> <li>7. Emergency Services Training Center</li> <li>8. Gilliland Baseball Field</li> <li>9. Historical Village</li> </ul> | <ul style="list-style-type: none"> <li>10. Horticulture Building</li> <li>11. Humanities Building</li> <li>12. Industrial Technologies I Building</li> <li>13. Industrial Technologies II Building</li> <li>14. James Library</li> <li>15. Keys Gymnasium</li> <li>16. Maintenance Building</li> <li>17. Owens Health Science Building</li> <li>18. Science Building</li> <li>19. Whitcomb Student Center</li> </ul> |
|--|--|

## CLASS LOCATION KEY

- |  |   |
|--|---|
| <ul style="list-style-type: none"> <li>ADT - Advanced Technologies</li> <li>BLC - Bishopric LifeLong Learning Center</li> <li>CCA - Center for Creative Arts</li> <li>CCWW - Center for Creative Woodworking</li> <li>ELDM - Eden Lawnmower</li> <li>ELSS - Elree's Sweet Shop - Eden</li> <li>GOWI - Goodwill Resource Center - Reidsville</li> <li>GYGO - Get Your Groom On - Madison</li> </ul> | <ul style="list-style-type: none"> <li>IT I - Industrial Technology I</li> <li>JUAS - Jumpers Auto Service - Eden</li> <li>MLIB - Mayodan Library</li> <li>Moodle - Online</li> <li>NCWC - NC Works - Madison</li> <li>OHS - Owens Health Science Building</li> <li>TBST - Barbour Photography Studio - Eden</li> <li>THRI - Three Rivers Outfitters</li> </ul> |
|--|---|



# Rockingham

COMMUNITY COLLEGE

**Please print all information**

Last 4 digits of SSN \_\_\_\_\_ or Student ID Number \_\_\_\_\_

Last Name \_\_\_\_\_ First Name \_\_\_\_\_

Address \_\_\_\_\_ City \_\_\_\_\_

State \_\_\_\_\_ ZIP \_\_\_\_\_

Birthdate \_\_\_\_\_ Gender:  Male  Female

Home Phone \_\_\_\_\_ Cell/Mobile \_\_\_\_\_

Email Address \_\_\_\_\_

Work Phone \_\_\_\_\_ Employment Status:  F/T  P/T  Unemployed

Race: White Asian Black/African American American Indian/Alaskan Native Native American (circle all that apply)

Are you of Hispanic origin?  Yes  No

Circle highest grade completed: 1 2 3 4 5 6 7 8 9 10 11 12 GED 13 14 15 16 17

By signing below, I certify that the given information is complete and correct.

Signature \_\_\_\_\_ Date \_\_\_\_\_

Section Number	Course Title	Location	Registration Fee
Section Number	Course Title	Location	Registration Fee
Section Number	Course Title	Location	Registration Fee
Section Number	Course Title	Location	Registration Fee

Select Payment:  MasterCard/Visa  Check  Money Order

To pay with MasterCard or Visa: Go to [www.rockinghamcc.edu](http://www.rockinghamcc.edu) · Click on **Continuing Education** · Click on **How to Register** · Click on **Register and Pay for Continuing Education Classes** · Again, click on **Register and Pay for Continuing Education Classes** · Key in **Course Code** · Click **Submit** · On the left, **select the course(s)** · Click **Submit** · Complete information and follow prompts for payment. **For Ed2Go payments**, contact Cathy Carter at [cartercb@rockinghamcc.edu](mailto:cartercb@rockinghamcc.edu).

**To register, complete this form and mail it, along with a check or money order payable to:  
RCC, PO Box 38, Wentworth, NC 27375, ATTN: Business Office. PLEASE DO NOT SEND CASH.**



**Rockingham**  
COMMUNITY COLLEGE

P.O. BOX 38

WENTWORTH, NC 27375-0038

Non-Profit Organization  
**US POSTAGE PAID**  
Wentworth, NC  
Carrier Route Presort  
Permit No. 1  
Postal Patron Local

## POSTAL PATRON

TAKE YOUR CAREER TO

# THE NEXT LEVEL!

### ASSOCIATE DEGREES

Accounting and Finance  
Associate Degree Nursing  
Associate Degree Nursing – LPN to ADN option  
Business Administration  
Computer - Integrated Machining  
Cosmetology  
Criminal Justice Technology  
Early Childhood Education

- Transfer Track – Licensure
- Transfer Track – Non-Licensure
- Career Track

Electrical Systems Technology  
General Occupational Technology  
Information Technology  
Manufacturing Technology  
Medical Office Administration

- Medical Billing and Coding
- Patient Services Representative

Prehealth Respiratory Therapy  
Prehealth Surgical Technology  
Respiratory Therapy  
Surgical Technology

### DIPLOMA PROGRAMS

Air Conditioning, Heating & Refrigeration Technology  
Computer-Integrated Machining  
Cosmetology  
Industrial Systems Technology  
Medical Office Administration  
Practical Nursing  
Surgical Technology  
Welding Technology

### COLLEGE TRANSFER PROGRAMS

Associate in Arts  
Associate in Science  
Associate in Fine Arts in Visual Arts  
Associate in General Education Nursing

### CERTIFICATE PROGRAMS

Air Conditioning, Heating & Refrigeration Basics  
Basic Law Enforcement Training (BLET)  
Computer-Integrated Machining Fundamentals  
Cosmetology  
Early Childhood Education  
Electrical Systems Technology

- Commercial Wiring
- Mechatronics
- Industrial Automation and Maintenance
- Programmable Logic Controllers
- Robotics

Industrial Systems Technology

- Cybersecurity
- Troubleshooting

Information Technology

- A+ Essentials
- Cybersecurity
- Network+ and Security+ Essentials
- IT Support Foundations
- Web Technologies

Medical Office Administration

- Medical Billing and Coding
- Patient Services Representative

Welding Technology

START LOCAL. GO FAR.

336-342-4261

ROCKINGHAMCC.EDU